

Surface Similarity

On the outside they all *look alike*. It's their superior performance that makes Cunningham tubes "a nation's choice."

Be guided in your selection by a name that has meant absolute tube integrity for the past fourteen years.

The name is Cunningham . . . choice of the American family.

Cunningham
RADIO TUBES

NEW YORK

CHICAGO

SAN FRANCISCO

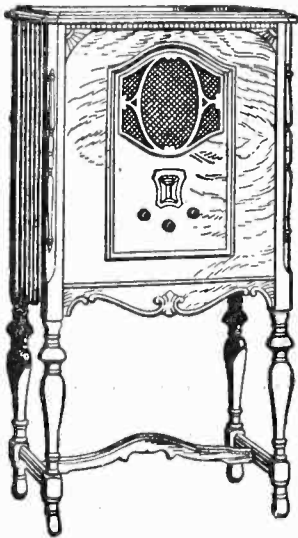
DALLAS

ATLANTA

Help Take the "Guesswork" Out of Radio Programs

Vote in the National Radio Preference Poll. Full details,
Bremer-Tully Hour, 9:30 p. m., KNX every Monday.

BREMER-TULLY RADIO



The new Bremer-Tully Micro-Balanced chassis has taken all the guesswork out of radio reception. Its every part is micrometer-gauged to .005 inch—a super-sensitiveness heretofore unknown in radio. That is why a Bremer-Tully instrument "hears" every whispered inflection, every delicate overtone—why it leaps the continent to capture far-away stations—and why its big 10-inch Power-Dynamic reproducer "speaks" in a voice so rich and mellow that the distant artists seem to be performing, gloriously, at your very elbow!

Model 81—De Luxe Open Console, All Electric—9 tubes, including rectifiers. Rich Walnut Cabinet, 10-inch Super-Dynamic Speaker, \$164.00, less tubes. Small down payment—a year to pay.

Telephone WEStmore 8229 for Name of Nearest Dealer

P. A. MITCHELL

Distributor for Southern California and Oregon

1248 So. Hope St.

Los Angeles

Radio Doings

Trade Mark Reg. U. S. Pat. Off.

New York Office
J. W. HASTIE
 155 East 42nd Street
 Vanderbilt 4661
CLOYD MARSHALL, JR.
Editor

Los Angeles Office
HORWOOD PUB. CO.
 407 East Pico Street
 WEstmore 1401
K. G. ORMISTON
Technical Editor

San Francisco Office
CONGER & MOODY
 1207-8 Hearst Bldg.
 Kearney 8483
GEORGE W. MARSHALL
Business Manager

Copyright, 1929, by Horwood Publishing Co.

RADIO DOINGS, OCTOBER 19, 1929. Issued weekly at 407 East Pico, Room 400, Los Angeles, Calif. Volume 15, No. 17. Subscription \$3.00 a year. Entered as second-class matter, November 25, 1922, Los Angeles, Calif., Post Office, under Act of March 3, 1879.

CONTENTS

Radio Topics of the Day.....	9	Schedule of DX Stations.....	19
Studio News.....	11	Football-Schedule.....	17
"Believe It or Not".....	13	Questions and Answers.....	23
DX Club.....	15	Timely Trade Topics.....	62

DIRECTORY OF DETAILED PROGRAMS

Call Letters	Location	Freq.	Page	Call Letters	Location	Freq.	Page
KDYL...	Salt Lake City....	1260	60	KHJ....	Los Angeles.....	900	28
KEJK...	Beverly Hills....	1170	44	KHQ....	Spokane.....	590	59
KELW...	Burbank.....	780	34	KMIC...	Inglewood.....	1120	44
KFI....	Los Angeles.....	640	24	KMO...	Tacoma.....	1340	56
KFOX...	Long Beach.....	1250	42	KMTR..	Hollywood.....	570	34
KFQZ...	Los Angeles.....	860	42	KNX...	Hollywood.....	1050	30
KFRC...	San Francisco....	610	52	KOA....	Denver.....	830	61
KFSD...	San Diego.....	600	46	KOL....	Seattle.....	1270	58
KFSG...	Los Angeles.....	1120	55	KOMO..	Seattle.....	920	57
KFVD...	Culver City.....	710	40	KPLA..	Los Angeles....	1000	50
KFWB..	Hollywood.....	950	36	KPO....	San Francisco...	680	48
KGB....	San Diego.....	1360	46	KQW...	San Jose, Cal....	1010	60
KGEF...	Los Angeles.....	1300	55	KTAB..	San Francisco...	570	54
KGER..	Long Beach.....	1370	40	KTBI..	Los Angeles.....	1300	54
KGFJ...	Los Angeles.....	1420	38	KTM...	Santa Monica....	710	38
KGO....	Oakland.....	790	55	WLW..	Cincinnati, Ohio..	700	58
KGW....	Portland, Ore....	620	56		National Broadcasting Co.		26

EVERY PACIFIC COAST SET OWNER SHOULD HAVE THIS GUIDE TO THE AIR

Logs, programs, news, DX, short wave, technical helps, illustrations—all delivered to your home in RADIO DOINGS for less than 6c a week.

Radio Doings, 407 East Pico Street, Los Angeles, California:

Enclosed is \$3.00. Please mail Radio Doings each week for one year to my address.

Name.....

Address.....

HEADLINERS

National—

MB 29 Tuner
Velvetone Amplifier
Shortwave Thrill Box

Remler—

111 Tuner
Amplifier and
Power Supply

Pilot—

Super Wasp Shortwave

Silver-Marshall—

712 AC Tuner
722 Tube Kit
735 AC Shortwave
677 Amplifier

ALL PARTS BY
THORDARSON, ELECTRAD, AMERTRAN, MAGNAVOX,
BODINE, WEBSTER, SILVER-MARSHALL, SAMSON,
AUDAK, AND COUNTLESS OTHERS

Distributed by

RADIO SUPPLY CO.

H. A. DEMAREST, President
912-914 S. Broadway VA. 3178, 3179 Los Angeles
WHOLESALE

Largest Radio Parts Jobber West of Chicago
Supplementary Sheets to Our Spring Catalogue Are Now Ready

KITS or PARTS

RECEIVING AND TRANSMITTING

Always a Complete Stock

Watch This List of Parts for Changes

Alco Loops	Dudlo Mfg. Co. Wire	Polymet Condensers
Acme Apparatus	Dunham Loops	Preston DX Ground
Acme Wire	Dunton Solder	Racon Horns
Advance Crystals	Eby Binding Posts	Radiall Co. Amperites
Aero-Products	Ekko Ground Clamps	Radio Owls
Aerovox Wireless Products	Electrad Products	Ray-O-Vac Batteries
All-American Products	Elkon Chargers	Raytheon Tubes
American Beauty Irons	Essenbee Ball Aerial	Readrite Meters
Amertran Products	Fidelity Speakers	REL Apparatus
Amperites	Flewelling Adapters	Remler Products
Amsco Condensers	Formica Insulation Co.	Samson Transformers
Baldwin Units	Franco Batteries	Sangamo Condensers
Baldor Motors	Frost Products	Scranton Hydrometers
B B L Cone Units	Goodrich Rubber Panels	Selectone Transformers
Benjamin Elec. Mfg. Co.	Gosilco Wire	Sensory Insulators
Benwood Linze Rectifiers	HFL Transformers	Skindervicken Buttons
Birnback Products	Hammarlund Products	Silver-Marshall Products
Bodine Loops and Coils	Hedgehog Transformers	Sovereign AC Tubes
Bouldin Cage Antennas	H-K Sodderdip Lugs	Spaulding Bakelite
Brandes Phones	Hosick Parts	Steinite Eliminators
Branston Honeycomb Coils	Jefferson Products	Sterling Testers
Bremer-Tully Products	Jones Products	Super Ball Antennas
Brentwood Leaks	Karas Products	Sunset Aerials and Grounds
Browning-Drake Kits	Ken-Rad Tubes	Sunset Sensitizer
Camfield Coils	Kellogg Parts	Thordarson Transformers
Carborundum Products	Knapp Power Units	Tube Condensers
Cardwell Condensers	Kodel Products	Tom Mack Products
Carter Products	Kurz-Kasch Dials	Tower Speakers
CeCo Tubes	Kuprox Chargers	Transcontinental Coils
Celeron Panels	Lynch Leaks	Tyrman Parts
C R L Resistance	Magnaformer Units	Universal Battery Clips
Chicago Kester Solder	Magnavox Dynamics	Universal Microphones
Clarostats	Marco Products	Utah Units
Corning Pyrex Insulators	Master Voltage Controls	Vesta Power Units
Crescent Transformers	Morris Ball Antenna Kits	Victoreen Parts
Daven Radio Parts	Mueller Universal Clips	Ward Leonard Products
DeJur Rheostats	Naald Parts	Weston Meters
DeLuxe Products	National Soldering Irons	Wright-DeCoster Dynamics
Diotogrand Units	National Co. Parts	X. L. Variodensers
Dubilier Condenser Corp.	Paratone Cone Units	Yaxley Products
	Parvolt Condensers	
	Phonovox Pickups	

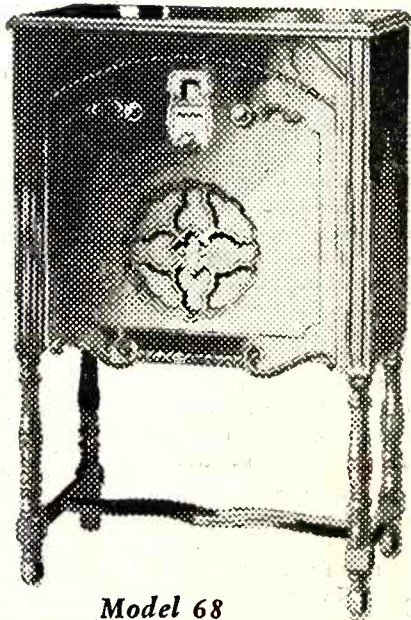
DEALERS: Park Next Door At Our Expense

RADIO SUPPLY CO.

H. A. DEMAREST, President
912-914 S. Broadway VA. 3178, 3179 Los Angeles
WHOLESALE
Largest Radio Parts Jobber West of Chicago

A Product of
General Motors
DAY-FAN

NEW Brilliance of tone . . . sensitiveness and selectivity . . . power . . . volume without distortion. Day-Fan surpasses itself through refinement of its famed audio-frequency-amplification system. Two 245 tubes in power output stage... specially designed and matched dynamic speaker.



Model 68

G. M. A. C. Finance
Terms

Compare the wonderful performance of the new Day-Fan with other sets. The beautiful Burl Walnut Console Cabinet—the clear reproduction of the dynamic speaker—the power of the nine tubes. You will agree that at \$179.50 less tubes Model 68 is real radio value.

Exclusive Southern California Distributor

C. C. LAWTON CO.

1125 Wall St.

Westmore 5395

Los Angeles



SONG-MOVIE MERGERS MAY AFFECT RADIO COPYRIGHT SITUATION

The latest twist in the complicated radio-movie-song publishers situation is the effect which the merging of several song publishers with companies which also operate broadcasting chains, may have ultimately on the payment of royalty for popular copyrighted music by the broadcasters to the American Society of Composers.

With the announced merging of the Paramount and Warner Brothers interests, Paramount now controls the Harms group, formerly contracted to Warner Brothers. And Paramount is interested in the Columbia Broadcasting System through a recent buy-in.

The National Broadcasting Company's song publishers hookup is through the consolidation of Felst's and Carl Fischer, Inc., with Radio-Keith-Orpheum, both subsidiary holdings of the Radio Corporation of America. It seems the parent companies, namely the Radio Corporation of America and Paramount, are interested in affiliations with the song publishers primarily for movie productions, but at the same time, one cannot overlook the fact that these parent companies are building up a counter weapon which might be used to break down the music royalty barrier, to which the broadcasters have been so much opposed.

SEEK TO PREVENT CHAIN PROGRAM DUPLICATIONS

An attempt to prevent duplication of chain radio programs on the listeners' dials is being made by the Federal Radio Commission in a survey of broadcasters on cleared channels who use chain programs at night.

Copies of a questionnaire, designed by W. J. Clearman, at the instigation of Commissioner Harold A. Lafount, asks fourteen questions. The information, obtained from fifty-odd stations, will be

used "to assist the Commission in its work of assigning frequencies to broadcasting stations in such a way as to provide the satisfactory reception of desirable programs without unnecessary duplication, interference, and waste."

Senator C. C. Dill, of Washington, recently hurled charges of favoritism to chain systems as against independent stations at the Radio Commission, and complained of the Commission's continual postponement of putting into effect General Order No. 43, which would limit the operation of stations on cleared channels broadcasting the same programs to transmitters 300 miles apart. This order has been delayed upon five different occasions, the latest effective date being set for December 31st.

RADIO ADVERTISING MAKES STRIDES

Radio advertising has increased 94.3 per cent in the first seven months of this year over the corresponding period of 1928, according to statistics just made public by the Bureau of Census, Department of Commerce. The data shows expenditures of \$9,947,000 by advertisers for broadcasting facilities as compared to \$5,133,000 in the same time last year. These figures cover only the National Broadcasting Company and the Columbia Broadcasting System and do not include the amounts of money spent for talent.

During this same period, newspaper advertising gained only 18.8 per cent. A survey of papers in 50 leading cities reveals. Radio advertising in newspapers, which contributed 3.8 per cent to the total lineage, made a gain of 133 per cent within the seven months.

In an emergency, a radio station can be "fired up" and made ready to go on the air in the short space of thirty seconds.



And What *Other* Radio Manufacturer *Wouldn't* like to Have Just *One* of These Feathers?

Others promise it
MODEL 60
DELIVERS IT!

What an unequal race this radio game has become!

Model 60, with the perfected Atwater Kent Screen-Grid circuit using Screen-Grid tubes, is out in front...gaining in favor every day...while imitators and old-style sets lag far behind in a bunch.

All Screen-Grid sets, to be sure, are more modern, demonstrating improvement in this or that particular salient feature. But none is comparable in any way to Model 60, the master of radio performance and leadership.

A radio alive with power—100 times more pulsing through every tube.

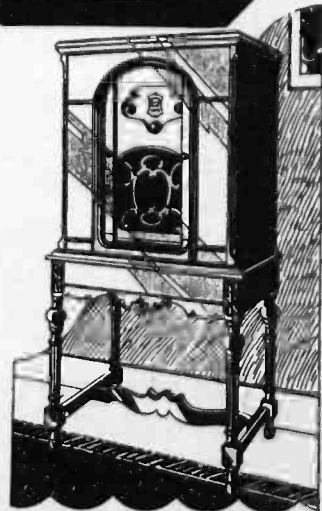
A radio with 10 times greater distance records.

A radio with needle-point selectivity that has eliminated that irritating fault of having one, two, three and sometimes four stations audible at once.

A radio that reproduces the scale from the high notes to the low notes...not just in between.

A radio with volume, but volume of only that which is broadcast, and not with the hum, distortion, squeals, howls, whistlings and a clattering of noise.

You'll never be satisfied with any other radio once you hear Model 60 Atwater Kent. So why not hear it first before you buy? Then you'll have no regrets.



MODEL 190-60C
Complete, Less Tubes
\$179.50

Other Screen-Grid Cabinet Models, complete, less tubes, \$146.00 and up.

RAY THOMAS, INC.

Distributor

1224 S. Hope St. Los Angeles

SOLD ON A SOUND BASIS



STUDIO NEWS

George Olson, whose bland and smiling personality dominates an aggregation of exceptional musicians at the Roosevelt Hotel in Hollywood, appears on this week's cover. In this day of truly marvelous dance music, Olson's Band is famous for novelty arrangement of dance numbers and a tendency to clown on the part of the drummer, who is Mr. Olson himself. Radio listeners-in are indebted to KFVB for the pleasure of hearing these broadcasts nightly except Sunday and Tuesday. (See KFVB's program schedule.)

Listeners-in will be glad to hear that June Pursell, the KNX Girl, will return from Honolulu and rejoin the Navigator crew on Wednesday night, October 23rd, from 8:30 to 9:30, over KNX.

Laughner-Harris Orchestra, from Paul Perrot's new cafe, is broadcasting nightly, except Sunday, over KMTR, at 10 o'clock, and furnishes dance music par excellence.

The Two Black Crows are back on the air over the Columbia Chain on the Paramount-Publix Radio Hour, which is broadcast every Saturday, at 7 p. m. KFRC and KHJ, both take this program.

Robert Hurd and Virginia Flohri, KFI's peerless artists, started an interesting series of programs intended for the musically select on October 17th, when they presented a program consisting of the cream of the classics. Mr. Hurd and Miss Flohri will offer these programs every Thursday evening, from 9:30 to 10, and they will make no concession to the popular taste at any time during the series.

KOA and KSL are the only west-ern stations which had the pleasure of hearing Miss Gloria Swanson, who sang two numbers on the Victor program on Thursday evening, October 10th. Miss Swanson will be heard from time to time on this program.

KPLA is conducting auditions on Thursday evening, from 6:30 to 7:.

Rip Caldwell and his Strollers is the new orchestra for the KGB Frolics on Saturday nights. The personnel of five men play a total of ten instruments, and two vocalists are included in the group.

Dick Creedon, for the last year and a half radio editor of The Examiner, has joined KHJ, the Don Lee station, as feature director, under an expansion program for the station.

Henri Damski's Neapolitan's offer a delightful program of light classics over KJR on Monday, Wednesday and Friday nights, beginning at 9:30 p. m.

Smiling Eddie Marble and his crew of merry-makers assemble every Sunday night at 9, and continue their amusing activities until 11:30, over KGER.

KHJ wants new radio talent of all kinds. Raymond Paige, KHJ musical director, is holding morning auditions at which singers, musicians and entertainers of all types are given a fair and courteous hearing. KHJ presents the cream of these auditions in a series of Discovery Hours broadcasts. Talent, which clicks with the public on the Discovery Hour programs, has an excellent chance of joining the regular KHJ entertainment staff.

Frank Watanabe, formerly of KFRC, and lately with KGO, has discontinued his "team idea" with the latter station. Eddie Holden, creator of Frank Watanabe, Japanese, is now in the midst of preparing a new series of comic sketches in collaboration with a nationally known writer of comics.

Don Wilson, the tenor of the Two Boys' Team, until recently heard over KHJ, is now conducting KFI's Children's Hour daily, except Saturday and Sunday, at 4:30 p. m.

Read what BIG money these fellows have made in the RADIO BUSINESS

\$375 One Month Spare Time



"Recently I made \$375 in one month in my spare time installing, servicing, selling Radio sets. And, not so long ago, I earned enough in one week to pay for my course."
EARLE CUMMINGS,
18 Webster St., Haverhill, Mass.

\$1597 In Five Months



"The N. R. I. is the best Radio school in the U. S. A. I have made \$1597 in five months. I shall always tell my friends that I owe my success to you."
HENRY J. NICKS, Jr.,
302 Safford Ave.,
Tampa Springs, Fla.

\$1164 Spare Time Profits



"Look at what I have made since I enrolled, \$1,164—money I would not have had otherwise. I am certainly glad I took up Radio with N. R. I. I am more than satisfied."
HENRY R. HEIKKINEN,
123 W. Erie St., Chicago, Ill.

Over \$1000 In Four Months



"My opinion of the N. R. I. course is that it is the best to be had at any price. When I enrolled I didn't know a condenser from a transformer, but from December to April I made well over \$1000 and I only worked in the mornings."
AL JOHNSON,
1409 Shelby St., Sandusky, Ohio.

I will show you too how to start a spare time or full time Radio Business of Your Own without capital



J. E. SMITH Pres.

Radio's amazing growth is making many big jobs. The worldwide use of receiving sets and the lack of trained men to sell, install and service them has opened many splendid chances for spare time and full time businesses.

Ever so often a new business is started in this country. We have seen how the growth of the automobile industry, electricity and others made men rich. Now Radio is doing the same thing. Its growth has already made many men rich and will make more wealthy in the future. Surely you are not going to pass up this wonderful chance for success.

More Trained Radio Men Needed

A famous Radio expert says there are four good jobs for every man trained to hold them. Radio has grown so fast that it simply has not got the number of trained men it needs. Every year there are hundreds of fine jobs among its many branches such as broadcasting stations, Radio factories, jobbers, dealers, on board ship, commercial land stations, and many others. Many of the six to ten million receiving sets now in use are only 25% to 40% efficient. This has made your big chance for a spare time or full time business of your own selling, installing, repairing sets.

I Will Train You At Home In Your Spare Time

I bring my training to you. Hold your job! Give me only part of your spare time. You don't have to be a college or high school graduate. Many of my graduates now making big money in Radio didn't even finish the grades. Boys 14, 15 years old and men up to 60 have finished my course successfully.

You Must Be Satisfied

I will give you a written agreement the day you enroll to refund your money if you are not satisfied with the lessons and instruction service when you complete the course. You are the only judge. The resources of the N. R. I. Pioneer and Largest Home-Study Radio school in the world stand back of this agreement.

So Many Opportunities You Can Make Extra Money While Learning

Many of our students make \$10, \$20, \$30 a week extra while learning. I'll show you the plans and ideas that have proved successful for them—show you how to begin making extra money shortly after you enroll. G. W. Page, 1807-21st Ave., S., Nashville, Tenn., made \$935 in his spare time while taking my course

I Give You Practical Radio Experience With My Course

My course is not just theory. My method gives you practical Radio experience—you learn the "how" and "why" of practically every type of Radio set made. This gives you confidence to tackle any Radio problems, and shows up in your pay envelope too

You can build 100 circuits with the Six Big Outfits of Radio parts I give you. The pictures here show only three of them. My book explains my method of giving practical training at home. Get your copy!

Get My Book

Find out what Radio offers you. My 64-page book, "Rich Rewards in Radio" points out the money making opportunities the growth of Radio has made for you. Clip the coupon. Send it to me. You won't be obligated in the least.

Address

J. E. Smith, Pres.

Dept. 9X53.

National Radio Institute
Washington, D. C.

This coupon is good for a FREE copy of my Valuable Book. Mail it NOW!

J. E. Smith,
President
Dept. 9X53.
National Radio Institute, Washington, D. C.

Dear Mr. Smith: Send me your book. I want to know more about the opportunities in Radio and your practical method of teaching at home in spare time. This request does not obligate me to enroll and I understand no agent will call on me.

Name.....Age.....
Address.....
City.....State.....



“Believe It or Not”

By K. G. ORMISTON

Our uneventful life is marked each year by certain outstanding incidents which are both anticipated and remembered with pleasure. Notable among these is our annual visit to the home of William Macdonald in Chula Vista, the world's DX champion, whose accomplishments are so remarkable that he has been included in that famous volume, "Believe It or Not!"

Accompanied by Seymour Hastings, we spent the night of October 7-8 with Bill, looked over his verifications for the past year and incidentally tuned in a little DX ourselves. Mac blushingly admitted that he had not "accomplished so much" this year, as it seems more difficult each year to get foreign DX. The real difficulty is that Bill has logged pretty nearly all of the stations in the world, so it becomes increasingly difficult for him to find new ones. In the entire year Bill has verified reception of but six new stations. This is illustrative of his patience.

But these six stations constitute an enviable "catch," any one of which would justify any other fan in retiring on his laurels. The documentary evidence is complete in each case. Macdonald dispatches his registered letter to the broadcaster on the same date he hears the station, preserves the registration card and carbon copy of his letter to file with the reply from the broadcaster, and in all keeps his files very complete and accessible.

The six stations heard and positively verified during the past year are:

Ljubljana, Yugoslavia. This is a 2500 watt station, and Bill heard them on the night of April 30th. A small 400 watt station at Halsenborg, Sweden, was logged on February 24th.

Radio 8HL, Tananariva, Madagascar, was heard on May 19th. This station management was so excited when Bill's letter was received that they replied by cablegram, paying about \$1.50 per word for a lot of words.

Radio 7UX, a 20 watt station at Launceston, Australia, was logged and verified, and the prize package of the

lot was KTC on October 11th of last year, a station located at Khartum, Sudan, Africa. This is a 3000 watt station and was heard at 1 a. m. August 14th. The letter from the station was signed by Flight Sergt. W. Cullen. The sixth station was in Genoa, Italy.

We were very happy also to meet Mrs. S. S. Stelzer at Mr. Macdonald's home. We have published her DX accomplishments from time to time in Radio Doings. Her latest verifications of importance are from Tallinn, Estonia, and San Salvador, Central America.

Bill Macdonald still uses a battery operated Magnaformer 9-8, and he swears by (not at) the Radio Doings Call Book, which has helped him "find" many of his foreigners.

We happened to have an Atwater Kent 60 in the car, and hooked it up during the evening and early morning. XEB in Mexico City was the first station we stumbled on, and of course all of the usual eastern stuff was tuned in. After midnight the six big Japanese stations were received with so much volume that at no time did we have the "60" wide open. 2YA, Wellington, was strong enough for us to understand announcements and recognize musical selections, and 4QG and 2BL were heard when not smothered by the powerful Japanese.

In all it was the sort of a night that a DX fan thoroughly enjoys, thanks to Mr. Macdonald's genial hospitality.

The manager of Radio JOGK, Kumamoto, Japan, in a letter to Roger B. Hall, of Wendling, Oregon, lists the stations in China and India as follows:

Station	Call	Meters	Power
Bombay, India	7BY	357	5000
Calcutta, India	7CA	370	5000
Moukden, China	COMK	420	2000

Mr. E. Arroyo, of 520 Pine Avenue, Long Beach (Parmelee-Dohrmann Co.), has just completed a Pilot Super-Wasp receiver, and would like to get in touch with some other fan in Long Beach who owns a Super-Wasp.

BT Counterphase 8—World's Greatest Radio—Sold with a Distance Guarantee. H. A. Everest, 1032 North Ogden Dr. Granite 9915.

KYLECTRON



*Model 23 Peerless,
48 inches high,
equipped with Ky-
lectron, here, com-
plete, \$290.75*

just smooth, subtle sound

FLOWING vibrant notes . . . symphonic, vocal or blue . . . with never a trace of distortion or hum. Tones so true that you *know* they come from Kylectron-equipped Peerless and Courier radios. No other radios could possibly reproduce so clearly. But there are other features besides Kylectron, the sensational speaker, in Peerless and Courier radios—there's *power detection*, three *screen grid* tubes, and . . . But you must *see* and *hear* for yourself. Drop in for a demonstration.

Sole Southern California Distributor

C. W. Smith, Inc.

1224 Wall Street

Los Angeles, Cal.

Westmore 5158



Through the courtesy of the Sylvania Products Company of Emporium, Pa., and Don C. Wallace, factory representative, we are offering a Sylvania tube to the prize winner in the DX Club each week. This tube may be of any of the DC types or a 24, 45, 26, or 27 in the AC types, as desired. The winner each week should write to Radio Doings at once specifying the type of tube desired.

FIRST PRIZE

DX Club:

This log was received with the help of the Radio Doings Call Book, and a Majestic Radio 71, 15 months old, using all the original tubes but one. The aerial is about 100 feet long. A pipe driven in the earth 3 feet, for a ground.

Am listing the stations as they come on the dial from 0 to 100.

The U. S. stations are as follows:

KGFJ, KOY, KGER, KGB, KMO, KGIQ, KFBK, KGEF, KDYL, KOL, KFOX, KYA, KMJ, KOB, KEX, KSL, KMIC, KFSG, KMOX, KWJJ, KNX, KRLD, KQW, KPLA, WHO, KDKA, KJR, FPSN, KFVB, KOIN, KFWM, KOMO, KHJ, KLX, WENR, KFQZ, KWKH, KOA, WHAS, WCCO, WBAP, WFAA, KGO, KTM, KELW, WBBM, KVI, WJR, WGN, KFVD, WLW, KPO, WMAQ, WSM, KFI, KQW, KFRC, KFSD, KHQ, KMTR, KTAB, KOAC.

The Canadian stations: CNRV, CKWX, CKCD (50 watts), CHLS (50 watts), CJCT, CFCT.

Japanese stations: JOAK, JOIK, JOHK.

This makes a total of 71 stations for the last six nights of DX hunting. The Japs come in between 1:30 and 2 a. m., Saturday, Oct. 5.

Have also heard two Mexican stations several times, but have not heard them announce in English.

Yours for more and better DX.

L. R. NATHAN,
822 S. Church St.,
Visalia, Calif.

DX Club:

Gentlemen—I notice you have again started the DX Club in your magazine. Now, I have a set that I don't believe can be equalled by any other in the state, it is a ———. I tune it in any place on the dial, and I can get KFI, KHJ, KFWB,

KNX, KFSG, KEJK, all at the same time, and it sure gives us wonderful reception. I have had as many as eight different stations at the same time. Can anyone equal this?

I am undecided whether to sell this set to Barnum & Bailey's circus as a freak, or send it to the Smithsonian Institute. Either, I am sure, would be glad to receive it.

As for getting anything outside of Los Angeles, I don't believe it could be done with a direct wire with the broadcasting station.

Boosting a ——— all the time, I am,

Yours truly,

MRS. A. H. A.,
Los Angeles, Calif.

DX Club:

I have been bringing in Eastern stations on a 4-tube battery set during the summer, and think I have a log here to be matched.

Since Sept. 1, I have recorded the following stations:

KHQ, KFRC, KGW, CFCT, WMAQ, CFCN, WLW, WGN, CKWX, WJR, KVI, KFAB, WBAP, WFAA, WCCO, WHAS, KWKH, WENR, WLS, WOC, CNRV, KTHS, KRLD, KMOX, KSOO, KVOO, WOAI, WBBM, WHO, WSUI and several others.

This has all happened on a 75-foot aerial with a ground connection to a nearby waterpipe and a Dictogrand speaker.

Many of the stations were loud enough for good room reception, but some of the weaker signals were brought in with phones.

I am for battery sets for distance, as they are surely clear in their reception.

Good wishes for the club.

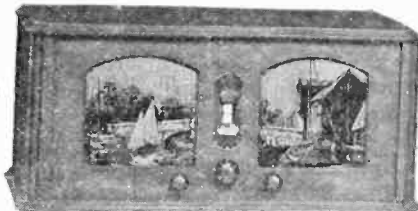
ARTHUR HAYLER,
3977 Normal St.,
San Diego, Calif.

Jackson-Bell



HIGHBOY
6 Tube \$109.50
8 Tube \$134.50

TONE CONTROL



LOWBOY
6 Tube \$ 99.50
8 Tube \$124.50

Table Model, 6 Tube, \$79.50

All Prices Include Tubes and Dynamic Speaker

CONSIDER the outstanding features offered in this new line of receivers—

Tone, Beauty, Selectivity, Performance,
and then study the PRICE and you will admit that once more Jackson Bell has assumed LEADERSHIP.

Tone Control!

Here is an exclusive feature which permits
you to
Hear the program "As You Like It."

There is a Jackson Bell dealer in your district
Call us for his address.



JACKSON-BELL CO.

BEacon 1766-1767

LOS ANGELES

1682-4 W. Washington

Gridiron Broadcasts

Carl Haverlin, Commercial Manager of KFI, has had a varied career, and has accomplished success in each field of endeavor, but listeners to his weekly broadcasts of football games cannot be persuaded that he does anything better than describe a football game.

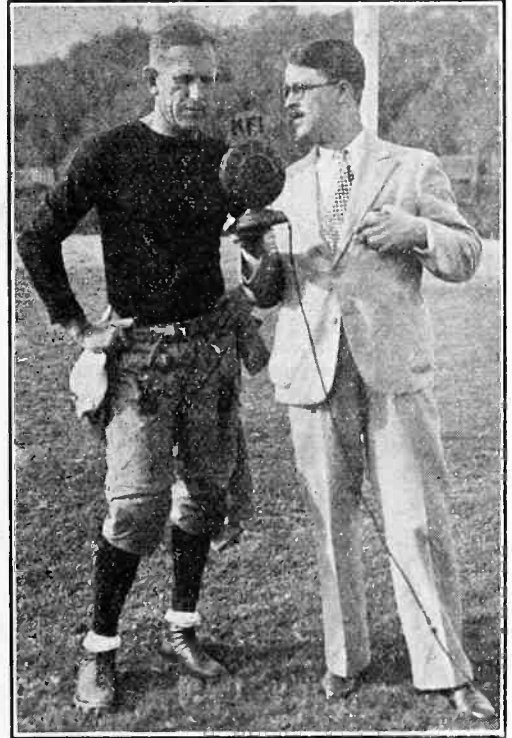
Mr. Haverlin began life by dreaming of becoming a full general in the United States army. To this end, he spent quite a few of his adolescent years in a military academy, preparing to enter West Point. However, a defect in his eyesight forced him to abandon that dream. Then he came to California and entered Manual Arts High School in Los Angeles. Here he ran the 220-yard dash, was member of a world's record relay team and threw the javelin.

Through these unpropitious channels he became interested in the stage. Moving with leaps much greater than those he used to cover the 220, Carl rapidly became the leading pantomimist in Marian Morgan's famous ballet, wrote a play, which was accepted and produced by David Belasco, and organized his own vaudeville company.

Realizing that the stage meant no permanent satisfaction to him, he gave it up without a single regret and entered the then dubious and unpromising field of radio. During his seven years in radio, Haverlin has become one of the most significant and forceful figures in a movement to raise radio—both in its commercial and artistic aspects—to the rank of a major industry and a major art.

Similes and metaphors, amazingly appropriate, make Mr. Haverlin's descrip-

tion of the grid-iron classics unusually vivid. Nor do the fine points of football suffer for this colorful telling, since



Coach Howard Jones and Carl Haverlin

the announcer is recognized for his accurate knowledge of the game.

Mr. Haverlin will be at the microphone for all local games,

FOOTBALL BROADCAST SCHEDULED FOR OCTOBER 26

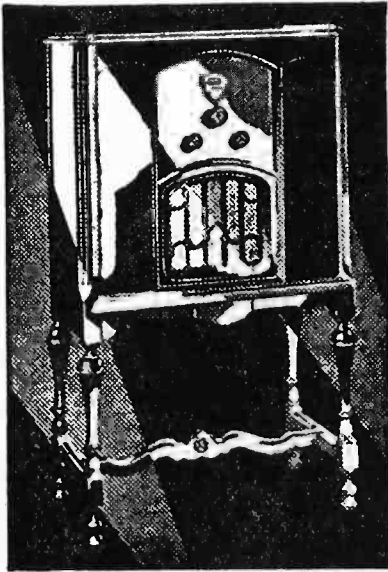
Station	W.L.	Game	Time	Where Played	Announcer
KDYL	1290	U. of Ill. vs. Michigan	12:00 m.	Urbana, Illinois	Ted Husing
KEJK	1170	U. C. L. A. vs. Pomona	2:00 p.m.	L. A. Coliseum	Morley Drury
KFI	640	Stanford vs. U. S. C.	2:00 p.m.	Palo Alto	Don Thompson
KFRC	610	U. C. vs. Olympic Club	2:00 p.m.	Berkeley	Ernie Smith
KFRC	610	Illinois-Michigan	11:00 a.m.	Urbana, Ill.	Ted Husing
KFWB	950	U. C. L. A. vs. Pomona	2:00 p.m.	L. A. Coliseum	Oscar Reichow
KGW	620	Washington vs. Oregon	2:00 p.m.	Seattle, Wash.	Geo. Guttormsen
KHJ	900	U. C. L. A. vs. Pomona	2:00 p.m.	L. A. Coliseum	Geary Breckner
KHQ	590	Gonzaga-Mt. St. Chas.	2:00 p.m.	Spokane, Wash.	C. C. Langtry
KMTR	570	U. C. L. A. vs. Pomona	2:00 p.m.	L. A. Coliseum	Jack James
KNX	1050	U. C. L. A. vs. Pomona	2:00 p.m.	L. A. Coliseum	Glen Rice
KOA	830	Col. Aggies vs. U. or U.	1:30 p.m.	Ft. Collins	Warren Williams
KOL	1270	Washington vs. Oregon	2:00 p.m.	Seattle, Wash.	Ken Stuart
KOMO	920	Washington vs. Oregon	2:00 p.m.	Seattle, Wash.	Geo. Guttormsen
KPO	680	Stanford vs. U. S. C.	2:15 p.m.	Palo Alto	Don Thompson

"Just As the Microphone Gets It"

FREED RADIO

"Famous Since Broadcasting Began"

Perfect Reception



MODEL 78

8-Tube AC Neutrodyne, Push-Pull
Amplification, Inductor, Dynamic
Speaker.

Price \$145.00 less tubes

Here at last is radio! The radio sensitive as the human ear. The radio that brings to you the program just as the microphone gets it.

Let us tune in the Freed Dance Orchestra on our new Freed Radio. We find ourselves listening to no mere mechanical reproduction of sound. We are enjoying a gorgeous tapestry of harmony, woven by Phil Spitalny's magic baton. It is all there—down to the subtlest shading of the leader's interpretation, down to the faintest blue moan of the "sax," down to the actual bowing of the violins. Just as the microphone gets it.

*Go to your nearest radio dealer and let him prove to you
the richness of Freed.*

ELECTRIC SUPPLY CO.

WEStmore 3041

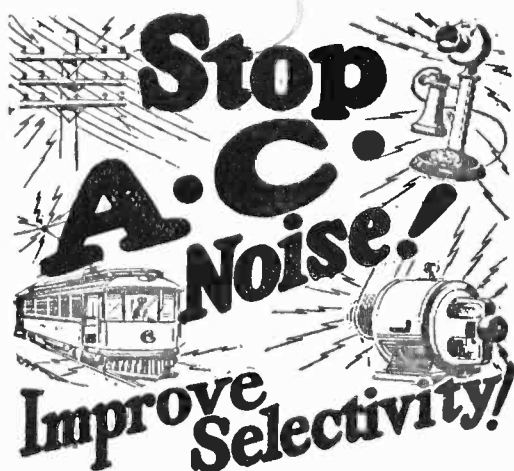
1801 S. Hill St.

Los Angeles

Schedule of DX Stations

The opening and closing hour of the evening broadcast only are given as it is unlikely that these stations can be heard on Pacific Coast prior to 5:00 p. m., P. S. T.

Call Letters	Location	Freq. Kc.	W. L. Meters	Power Watts	Sunday	Monday	Tuesday	Wednesday	Thursday	Friday	Saturday
WDAF	Kansas City, Mo.	610	491.5	1000	5.00-8.00	5.00-11.00	5.00-11.00	5.00-11.00	5.00-11.00	5.00-11.00	5.00-11.00
WIP	Philadelphia, Pa.	610	491.5	500	5.30-7.00	4.00-12.00	S	4.00-8.00	S	4.30-8.00	S
WSM	Nashville, Tenn.	650	461.3	5000	5.00-8.15	5.00-9.00	5.00-9.00	5.00-9.00	5.00-9.00	5.00-8.30	5.00-10.00
WMAQ	Chicago, Ill.	670	447.5	5000	5.00-9.00	5.00-12.00	5.00-12.00	5.00-12.00	5.00-12.00	5.00-12.00	5.00-12.00
WLW	Cincinnati, O.	700	428.3	50000	5.00-9.30	5.00-10.00	5.00-10.00	5.00-10.00	5.00-10.00	5.00-2.00	5.00-10.00
WOR	Newark, N. J.	710	422.3	5000	4.30-7.00	5.00-9.00	5.00-9.00	5.00-9.00	5.00-9.00	5.00-9.00	5.00-9.00
WGN	Chicago, Ill.	720	416.4	25000	5.00-10.20	5.00-11.00	5.00-10.35	5.00-11.00	5.00-11.00	5.00-11.00	5.00-12.15
WSB	Atlanta, Ga.	740	405.4	1000	5.00-8.00	5.00-9.45	5.00-9.45	5.00-9.45	5.00-9.45	5.00-9.45	5.00-9.45
WJR	Detroit, Mich.	750	399.8	5000	5.00-11.00	5.00-11.00	5.00-11.00	5.00-11.00	5.00-11.00	5.00-11.00	5.00-11.00
WBBM	Chicago, Ill.	770	389.4	25000	6.00-11.30	6.00-11.00	6.00-10.30	6.00-11.00	6.00-11.00	6.00-11.00	6.00-11.00
KFAB	Lincoln, Neb.	770	389.4	5000	S	7.00-9.30	8.00-9.30	7.00-9.30	8.00-9.30	7.00-9.30	8.00-9.30
WBAP	Fort Worth, Tex.	800	374.8	50000	7.30-10.00	6.30-10.00	5.00-7.00	6.30-10.00	5.00-7.00	7.00-10.00	5.00-7.00
WGY	Schenectady, N. Y.	790	379.5	50000	5.00-6.45	5.00-8.00	5.00-9.30	5.00-8.00	5.00-8.30	5.00-9.00	5.00-9.00
WCCO	Minneapolis, Minn.	810	370.2	7500	5.00-9.00	5.00-9.00	5.00-9.30	5.00-10.00	5.00-9.00	5.00-10.00	5.00-10.00
WHAS	Louisville, Ky.	820	365.6	10000	5.00-8.30	5.00-10.00	5.00-10.00	5.00-10.00	5.00-10.00	5.00-10.00	5.00-10.00
WENR	Chicago, Ill.	870	344.5	50000	5.00-10.00	8.00-12.00	6.00-12.00	6.00-12.00	8.00-12.00	8.00-12.00	7.15-12.10
WFLA	Clearwater-Sr. Petersburg, Fla.	900	333.1	2500	S	5.00-9.00	5.00-9.00	5.00-9.00	5.00-9.00	5.00-9.00	5.00-9.00
KDKA	Pittsburgh, Pa.	980	305.9	50000	5.00-9.10	5.00-9.10	5.00-9.00	5.00-9.30	5.00-9.30	5.00-9.00	5.00-9.30
WBZ	Springfield, Mass.	990	302.8	15000	5.00-9.45	5.00-9.45	5.00-9.45	5.00-9.32	5.00-9.35	5.00-9.32	5.00-9.32
WHO	Des Moines, Ia.	1000	299.8	5000	5.00-10.00	S	5.00-9.00	S	5.00-9.00	S	5.00-9.00
WOC	Davenport, Ia.	1000	299.8	5000	S	5.00-8.40	S	5.00-8.40	S	5.00-8.40	S
KYW-	Chicago, Ill.	1020	293.9	5000	5.00-8.00	5.00-9.30	5.00-9.30	5.00-9.30	5.00-9.30	5.00-9.30	5.00-9.30
KFKX	Baltimore, Md.	1060	283.	10000	S	S	5.00-9.00	S	5.00-9.00	S	5.00-9.00
WTAM-	Cleveland, O.	1070	280.2	50000	5.00-10.00	5.00-10.00	5.00-10.00	5.00-10.00	5.00-10.00	5.00-10.00	5.00-10.00
WEAR	Atlantic City, N. J.	1100	272.6	5000	5.00-8.00	5.00-9.00	5.00-9.00	5.00-9.00	5.00-9.00	5.00-10.00	5.00-9.00
WPG	State College, N. Mex.	1180	254.1	10000	5.00-8.00	5.00-9.00	5.00-9.00	5.00-9.00	5.00-8.30	5.00-9.00	5.00-8.00
KOB	St. Louis, Mo.	1350	222.1	1000	5.00-8.00	5.00-10.00	5.00-10.00	5.00-10.00	5.00-10.00	5.00-10.00	5.00-10.00
KWK	St. Paul, Minn.	1460	205.4	10000	5.00-10.00	5.00-10.00	5.00-11.00	5.00-11.00	5.00-11.00	5.00-11.00	5.00-11.00
KSTP	St. Paul, Minn.	1460	205.4	10000	5.00-10.00	5.00-10.00	5.00-11.00	5.00-11.00	5.00-11.00	5.00-11.00	5.00-11.00



RADIO reception may be made much more enjoyable by plugging in a Falck Claroceptor between the light socket and your set. By blocking out the line interference noises, this wonderful device also helps selectivity and distance. Thousands now in successful use. No change required in your set. Only equipment of the kind. Compact size: $3\frac{1}{2}'' \times 5\frac{1}{2}'' \times 2\frac{1}{2}''$. At radio parts dealers, or write us for new free booklet. Price \$7.50 complete.

Heavy Duty Model Stops Interference at the Source

The Falck power type Claroceptor, selling for \$15, stops interference at the source. For use with electric refrigerators, flashers, rectifiers, small motors, etc. Carrying capacity up to 10 amps.

Falck CLAROCEPTOR

Manufactured by ADVANCE ELECTRIC CO.
1260 W. Second St., Los Angeles

JOBBERS AND DEALERS, GET OUR PROPOSITION

Silver Dollars for Silver Dealers

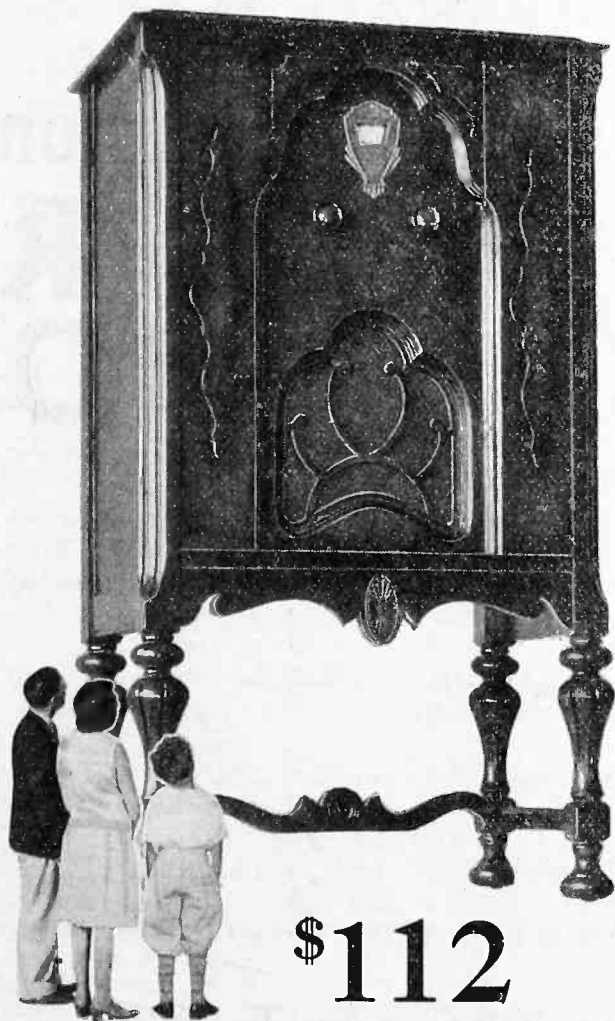
Radio Distributing Company, Silver Radio distributors for Southern California and Arizona, leads the entire country in number of franchised dealers secured, according to a wire received yesterday from McMurdo Silver, president of Silver-Marshall, Inc., by D. N. Marshank, representative of this well-known radio manufacturer.

Just four months ago W. W. Petley, head of the Radio Distributing Company, took on the Silver Radio for this territory. In this short time more than 160 franchised dealers, covering every city in this territory, have been appointed.

So great was the response to the announcement of this new type radio that within a few days the first shipment, consisting of several carloads, was sold. Since then, many more full loads have been received and have been divided among dealers and still there is a shortage, which Mr. Petley promises should soon be overcome.

A Japanese subscriber to Radio Doings, Mr. Minoru Nakamura, has been licensed by the Japanese Government as an experimental DX hunter. Mr. Nakamura's letterhead bears this quaint inscription: "The licensed DX hunter in Mikado's country." He tells us that it is unlawful for the owner of an unlicensed receiving set to pick up foreign broadcasting in Japan. He also states that advertising over the radio is strictly forbidden in Japan, and asks that interested fans in this country write to him and explain how advertising is handled by radio. In fact, Mr. Nakamura, whose address is Yamate, Oisomachi, Kanagawa-Ken, Japan, will gladly correspond with fans in this country on subjects of mutual interest.

H. W. Kidd, a Los Angeles attorney, and W. R. Williams, of the California Railroad Commission, recently logged every musical item and announcement for more than an hour from 2YA, Wellington, New Zealand, at Mr. Kidd's Laguna Beach cottage. They used a Radiola 60, and were so proud of their unusual accomplishment that photostatic copies of the correspondence with 2YA have been made to convince Doubting Thomases.



LOOK! LISTEN!

The "secret" of getting a satisfactory radio is right there in those two words: **LOOK and LISTEN!** LOOK beyond the advertised performance claims into the "performance-equipment" of the radio sets in your price range. Check point by point the sets in which you are interested.

Falck-53 has all the desirable features necessary to fine performance. Screen grid, true dynamic speaker, power tubes in push-pull, tuned antenna circuit and one-dial control without extra knobs. It is the only radio with controlled regeneration.

Any Falck neighborhood dealer will be pleased to demonstrate this remarkable set in your home without obligation to you.

\$112

(Without Tubes)

Price slightly higher outside of California.



Falck - 53

SCREEN-GRID PLUS

Manufactured and Guaranteed by

ADVANCE ELECTRIC COMPANY 1260 W. Second St., Los Angeles, Calif.
Pioneer Manufacturers of Radio Equipment

SM SILVER-MARSHALL, Inc.

Greatest Distance Champion

Plays Japan
Australia
New Zealand

SILVER RADIO

Read These Startling Wires

“September twenty-sixth, ran all night long distance test on Silver Radio. Received sixty-eight stations, including three East Coast, many Middle West, four Canadians, one from Mexico, three Japanese, two from Australia and one from New Zealand.”—E. M. Sargent.

“Played JOAK, Tokio, and JOHK, Sendai, Japan, September twenty-fifth on Silver Radio, with excellent tone and clarity.”—Kenneth Ormiston.

The following log was received September 28th on a Silver Radio by F. M. Vanderlip of Van Nuys: Three Japanese, one Canadian and 28 widely separated U. S. stations Here they are:

WCCO, KFSD, KTAB, KVI, KGO, KJR, KYA, KOA, WLW, KOB, KFRC, WHAS, KTHS, KDYL, KSL, KLX, KGB, KGW, WENR, KMOX, KGA, KWKH, KPO, KHQ, WMAQ, KOMO, KEX and WLS.

Your Silver Radio Will Give You the Same Brilliant Performance

Silver-Marshall, Inc. radios have always been champion distance getters. Now greater distance than ever is yours through the perfect use of 4 screen grid tubes in the new 8-tube Silver Radio, Silver-Marshall's supreme achievement. Far away stations are amplified while roar of locals is hushed. Static is minimized by Over-tone Switch. There is no trace of hum at any point on the dial. No

aerial or ground required by Silver Radio for brilliant local or distance reception. See the beautiful new Silver Radio cabinets designed especially for California homes. Hear the glorious tone of this amazing radio today at your nearest dealer.

Radio Distributing Co.

So. Cal. and Arizona Distributors
138 W. 17th St. Tel. WE. 4376

**Call WE 4376 For the Address of
the Silver Radio Dealer Nearest You**



Questions & Answers

A Weekly Department Conducted by K.G. Ormiston, I.R.E.

QUESTION—I have an Atwater Kent Model 44 AC receiver and use ground reception, finding it to be better than aerial reception. In either of these methods I obtain better results without connecting up for any grounding. Is the non-grounding injurious to my set? And why do I get better reception by non-grounding? W. S., Phoenix, Arizona.

ANSWER—You have the same erroneous idea which is shared by many other fans who think that they are using the ground as an aerial when they connect the ground wire to the antenna post of the set. A ground connection is a ground, and can never be anything but a ground. Under no circumstances will it serve as an aerial. There is such a thing as an underground aerial, but in this case there is a long buried wire, which is **INSULATED** from the earth by suitable insulation and a lead sheath to keep the insulation moisture-proof. A direct connection to the earth cannot serve as an antenna. When you connect this ground wire to the antenna post of your set, you use the A.C. lighting circuit as an antenna, and in your particular house it evidently so happens that this arrangement gives better results than using a proper aerial. The writer has experienced similar phenomena, where any combination of outdoor aerial and buried ground, properly connected, will not give as good results as simply putting the ground wire on the antenna post and using the power company's lines as an aerial. This applies only to A.C. sets, of course, and only to locations where the house wiring happens to constitute an efficient pick-up system.

When you connect the aerial to the aerial post and use no ground wire, your grounding is in that case due to the capacity effect between the set, the A.C. lines and the earth. It is what might be termed a counterpoise ground. So, in every case, no matter what peculiar method of connections may be used, there is **ALWAYS** an aerial and **ALWAYS** a ground.

There is no harm in operating as you are, using only the ground wire, except

that such an arrangement is often noisy, due to the fact that the lighting lines may be carrying considerable electrical interference. In your case there may be no electrical interference. In ordinary practice, the proper aerial and ground would be superior, but by all means use whatever arrangement gives you the best reception.

QUESTION—As usual in the months of October and November, I am receiving foreign stations in the early mornings on my Radiola 28. I presume the stations are Japanese, but so far I have been unable to identify them by call letters. This morning, October 4th, 4 a. m., mountain time, the reception was particularly good, and strong signals in the same foreign language came in on frequencies of about 870, 850, 790, 770 and 750. With your experience in trans-Pacific reception, I hope you can help me identify these stations. An English-speaking station has also been received on 720 which, I believe, must be Australian. It signed off at 4:30 a. m., one morning, playing "God Save the King." Is there any Australian station on this frequency?

A. ANDRESSEN,
Great Falls, Montana.

ANSWER—Apparently what you need is a Radio Doings Call Book. The six stations in Japan, which you heard, are the six 10,000 watters, whose call letters and wave-lengths are as follows: JOAK, 345 meters; JOFK, 353 meters; JOIK, 361 meters; JOGK, 380 meters; JOHK, 390 meters; JOBK, 400 meters. These six stations all fall between 750 and 870 kilocycles on the dial, as you have noted. They are usually tied together on a chain and broadcast simultaneously, though the latter part of their program is sometimes individually rendered.

The English-speaking station which you logged at about 720 kilocycles, and who signed off with "God Save the King" is 2YA, Wellington, New Zealand. It is a 5000 watter, and operates on 420 meters. This is the most readily received of the trans-Pacific stations.



HARRY HALL

KFI

Los Angeles, Calif.—640 Kc.

5000 WATTS—468.5 METERS

Radio Central Super-Station of Earle C. Anthony, Inc.
1000 S. Hope. Phone WE. 0331. After 5 P. M., WE. 0337

DAILY EXCEPT SUNDAY

- 7:30 a. m.—Opening Market Quotations by E. A. Pierce & Co.
8:00 a. m.—Shell Happy Time from KPO.
10:30 a. m.—Woman's Magazine of the Air (except Thurs. and Sat.).
12:00 noon—Agriculture Talks and Market Reports.
2:30 p. m.—Phenomena (except Monday).
4:30 p. m.—Big Brother (except Mon. and Sat.).
5:45 p. m.—Stock Market Reports by E. A. Pierce Co. (except Friday and Saturday).
11:00 p. m.—KFI News Bureau (except Monday and Tuesday).

- 5:00 p. m.—Three Skippers and Jackie Archer.
6:00 p. m.—Wm. Don, English comedian.
6:30 p. m.—NBC, Palmolive Hour.
7:30 p. m.—NBC, Stromberg-Carlson.
8:00 p. m.—NBC, Associated Oil Co.
8:30 p. m.—Earle C. Anthony Inc. program. KFI, KPO, KGO.

- 9:00 p. m.—Paul Roberts and Schonberger Trio.
9:30 p. m.—The Harmonettes.
10:00 p. m.—NBC, Cotton Blossom Minstrels.

THURSDAY, OCTOBER 24

- 9:00 a. m.—Sadye Nathan, Beauty Talk.
9:15 a. m.—Bristolow & Co. Ltd., Sylvia's Happy Hour
9:45 a. m.—NBC, Betty Crocker Gold Medal Home Service talk.
10:00 a. m.—NBC, Woman's Magazine of the Air.
11:00 a. m.—NBC, Standard School broadcast.
11:45 a. m.—French Lesson by Annette Doherty.
6:00 p. m.—Nick Harris, Detective Story and prog.
7:00 p. m.—NBC, Halsey Stuart.
7:30 p. m.—NBC, Standard Oil Co. program.
8:30 p. m.—NBC, United Reproducers Corporation.
9:00 p. m.—North American Bldg. & Loan Assn.
9:30 p. m.—Song Recital, Virginia Flohri and Robert Hurd.

- 10:00 p. m.—NBC, Green Room.

FRIDAY, OCTOBER 25

- 9:00 a. m.—Bess Kilmer's Helpful Hints to Housewives.
10:00 a. m.—NBC, DuBarry Radio Talk.
11:30 a. m.—"Mental Exercises," Francis Hancock.
12:25 p. m.—Franklin L. Graves talk.
2:15 p. m.—Winnie Fields Moore.
4:00 p. m.—E. H. Rust, Nurseryman.
5:00 p. m.—Ruth Haddock, "Essays in Song."
5:30 p. m.—Edwin August, Dramatic Critic of the Air.
6:00 p. m.—NBC, Intervoven Pair.
6:30 p. m.—NBC, "Phlico Theatre Memories."
7:00 p. m.—NBC, Armstrong Quakers.
7:30 p. m.—NBC, The Armour Hour.
8:00 p. m.—NBC, RCA Hour.
9:00 p. m.—NBC, Borden Milk program.
9:30 p. m.—NBC, "Union Service Station Four."
10:00 p. m.—NBC, In the Parlor.
10:30 p. m.—NBC, The Nomads.

SATURDAY, OCTOBER 26

- 10:00 a. m.—NBC, National Farm and Home Hour
11:45 a. m.—French Lesson by Annette Doherty.
12:00 noon—Agriculture Talks and Market Reports.
2:00 p. m.—NBC, U. S. C.—Stanford Football Game at Palo Alto.
5:00 p. m.—NBC, "The Lyric Challengers."
5:30 p. m.—Police Com. W. G. Thorpe.
6:00 p. m.—NBC, General Electric Hour.
6:30 p. m.—NBC, Lucky Strike Hour.
7:00 p. m.—NBC, Temple Corporation program.
8:00 p. m.—Earle C. Anthony Inc. prog., KFI, KPO.
8:30 p. m.—"Launderland Lyrics."
9:00 p. m.—Tom Terriss, Vagabond Movie Director, and Packard Concert Orch., Pryor Moore, director.

- SUNDAY, OCTOBER 20**
10:00 a. m.—Temple Baptist Church.
2:30 p. m.—NBC, Sunday Musical Concert.
3:30 p. m.—NBC, Whittall Anglo Persians.
4:00 p. m.—Margaret Ruth Kernan, soprano.
4:30 p. m.—Leila Castberg, "Advanced Thought."
5:00 p. m.—Genevieve Behrend, "Science of Life."
5:15 p. m.—NBC, Collier Hour.
6:15 p. m.—Atwater Kent.
7:15 p. m.—NBC, Studebaker Champions.
7:45 p. m.—NBC, Enna Jettick Melodies.
8:00 p. m.—Packard Concert Orch., Pryor Moore, dir.
9:00 p. m.—KFI Ensemble.
10:00 p. m.—Wally Perrin's Packard Dance Orchestra.
Jean Dunn, soloist.

MONDAY, OCTOBER 21

- 9:00 a. m.—Sadye Nathan, Beauty Talk.
9:15 a. m.—Bess Kilmer's Helpful Hints to Housewives.
9:45 a. m.—Sylvia's Happy Hour.
11:30 a. m.—"Mental Exercises," Francis Hancock.
2:15 p. m.—Winnie Fields Moore.
2:30 p. m.—NBC, California School of the Air.
3:00 p. m.—"Phenomena"
3:30 p. m.—Better America Federation.
4:00 p. m.—Big Brother.
6:00 p. m.—NBC, Edison Recorders.
6:30 p. m.—NBC, General Motors Family Party.
7:30 p. m.—NBC, Empire Builders.
8:00 p. m.—NBC, Shell program.
9:00 p. m.—NBC, Voice of Firestone.
9:30 p. m.—Packard Concert Orchestra, Pryor Moore.

TUESDAY, OCTOBER 22

- 9:00 a. m.—NBC, "Health in Refrigeration."
9:30 a. m.—Bess Kilmer's Helpful Hints to Housewives.
9:45 a. m.—NBC, Betty Crocker Gold Medal Home Service talk.
10:00 a. m.—Bristolow & Co. Ltd., Sylvia's Happy Hour.
11:30 a. m.—NBC, Duco program.
12:00 noon—Agriculture Talks and Market Reports.
2:00 p. m.—Triollan Trio and Winnie Fields Moore.
3:45 p. m.—Leonard Van Berg.
6:00 p. m.—NBC, Eveready Hour.
7:00 p. m.—NBC, Chicquot Club Eskimos.
7:30 p. m.—Earl Orchestradians, NBC.
8:00 p. m.—NBC, RKO Hour.
8:30 p. m.—NBC, Pacific Coast, RKO Hour.
9:00 p. m.—"The Parker Family."
9:30 p. m.—L. A. Steamship Co., KFI, KPO, KGO.
10:00 p. m.—NBC, Spotlight Review.

WEDNESDAY, OCTOBER 23

- 9:00 a. m.—Bess Kilmer's Helpful Hints to Housewives.
9:30 a. m.—Sylvia's Happy Hour.
10:15 a. m.—NBC, Libby, McNeill & Libby.
11:30 a. m.—"Mental Exercises," Francis Hancock.
12:00 noon—Agriculture Talks and Market Reports.
2:00 p. m.—Triollan Trio and Winnie Fields Moore.

Copyright 1929 by Earle C. Anthony, Inc.

Radio Financing

ROBERT E. HOPKINS & CO.

417 South Hill St.

Los Angeles

MUTual 6282

MAJESTIC

LARCHMONT RADIO SALON
139 N. Larchmont

HEmpstead 5990



^{C.A.} Earl Radio

A radio value
which you had not
believed was possible.

See it!

Hear it!

You'll believe!

In four Console Models
ranging from \$99.50 to
\$225.00.

TO DEALERS

*The C. A. EARL franchise
is going to be valuable in
1929-30. Come in and talk
it over . . . find out what we
have to offer . . . or tele-
phone WEStmore 2238 for
information.*

EVAN O. THOMAS CO.

1017 SOUTH GRAND
WESTMORE 2238

Southern California Distributors



JENNINGS PIERCE

National Broadcasting Co., Inc.

PACIFIC COAST NETWORK

**KFI KPO KGO
KGW KOMO
KHQ KOA KSL**

Charles H. Gabriel, Jr.
Program Director

Jennings Pierce
Chief Announcer
and Program Director

DAILY EXCEPT SUNDAY

10:30 a. m.—"Woman's Magazine of the Air" (except Thursday).

SUNDAY, OCTOBER 20

11:00 a. m.—Grace Cathedral Services. KGO.
1:00 p. m.—National Sunday Forum. KGO, KHQ, KOMO.
2:30 p. m.—Sunday Afternoon Concert. KGO, KHQ, KOMO, KGW.
3:30 p. m.—Whittall Anglo-Persians. KGO, KHQ, KOMO, KGW, KFI.
4:00 p. m.—Sunday Afternoon Concert. KGO, KOMO, (KGW, 4:30 to 5:00 p. m.).
5:00 p. m.—Studio program. KGO.
5:15 p. m.—Collier's Radio Hour. KHQ, KOMO, KGW, KPO, KFI.
5:45 p. m.—Hudson Bay Fur Company program. KGO.
6:15 p. m.—Atwater Kent program. KGO, KHQ, KOMO, KGW, KPO, KFI.
7:15 p. m.—Studebaker Champions. KGO, KHQ, KOMO, KGW, KPO, KFI.
7:45 p. m.—"Enna Jettick Melodies." KGO, KHQ, KOMO, KGW, KPO, KFI.
8:00 p. m.—The Pilgrims. KGO.
9:00 p. m.—The Reader's Guide. KGO.
9:30 p. m.—Stanislas Bem's Little Symphony. KGO.

MONDAY, OCTOBER 21

11:30 a. m.—Rembrandt Trio. KGO.
3:00 p. m.—Mormon Tabernacle program. KGO, KOMO, KPO.
5:30 p. m.—Aunt Betty Kiddies Klub. KGO.
6:00 p. m.—Edison program. KGO, KHQ, KOMO, KGW, KPO, KFI.
6:30 p. m.—General Motors Family Party. KGO, KHQ, KOMO, KGW, KPO, KFI.
7:30 p. m.—"The Empire Builders." KGO, KHQ, KOMO, KGW, KPO, KFI.
8:00 p. m.—Rudy Seeger's Shell Symphonists. KGO, KHQ, KOMO, KGW, KPO, KFI.
9:00 p. m.—"Voice of Firestone." KGO, KHQ, KOMO, KGW, KPO, KFI, KSL, KOA.
9:30 p. m.—Plantation Echoes. KPO, KSL, KOA.
9:30 p. m.—A Grace Anderson Michie Miniature Biography. KGO.
10:00 p. m.—Slumber Hour. KGO, KSL, KOA.
11:00 p. m.—Henry Halstead's Hotel St. Francis Dance Orchestra. KGO.

TUESDAY, OCTOBER 22

9:00 a. m.—"Health in Refrigeration." KGO, KHQ, KOMO, KGW, KFI.
9:45 a. m.—Betty Crocker Gold Medal Home Service Talks. KGO, KHQ, KOMO, KGW, KFI.
10:00 a. m.—The Three Boys. KGO.
11:30 a. m.—Duco Decorators. KGO, KHQ, KOMO, KGW, KPO, KFI.
11:45 a. m.—Rembrandt Trio. KGO.
2:00 p. m.—The Wanderers. KGO, KHQ, KOMO, KGW, KPO.
4:30 p. m.—Hotel St. Francis Salon Orchestra. KGO.
5:30 p. m.—"Around the World with Libby." KGO, KHQ, KOMO, KGW, KPO.
6:00 p. m.—Evereedy Hour. KGO, KHQ, KOMO, KGW, KPO, KFI.
7:00 p. m.—Cliqueot Club Eskimos. KGO, KHQ, KOMO, KGW, KPO, KFI.
7:30 p. m.—C. A. Earl Orchestralians. KGO, KHQ, KOMO, KGW, KPO, KFI.
8:00 p. m.—"The Keith-Orheim Hour." KGO, KHQ, KOMO, KGW, KPO, KFI.
9:00 p. m.—The Parker Duofold Family. KGO, KPO.

KOMO, KGW, KPO, KFI.
10:00 p. m.—Spotlight Review. KGO, KHQ, KFI.
(KPO, 10:30 to 11:00 p. m.).
11:00 p. m.—Musical Musketeers. KGO, KHQ, KOMO, KPO.

WEDNESDAY, OCTOBER 23

10:15 a. m.—Mary Hale Martin's Household Period. KGO, KHQ, KOMO, KGW, KFI, KSL, KOA.
11:30 a. m.—Rembrandt Trio. KGO.
1:00 p. m.—Pacific Vagabonds. KGO, KOMO.
3:00 p. m.—The Cabin Door. KGO, KHQ, KOMO, KGW, KPO.
4:00 p. m.—Hotel St. Francis Salon Orchestra. KGO.
6:00 p. m.—Agricultural program. KGO.
6:30 p. m.—Palmlive Hour. KGO, KHQ, KOMO, KGW, KPO, KFI.
7:30 p. m.—Stromberg-Carlson program. KGO, KHQ, KOMO, KGW, KPO, KFI.
8:00 p. m.—"Roads to Romance." KGO, KHQ, KOMO, KGW, KPO, KFI.
8:30 p. m.—The Hill Billy Boys. KHQ.
9:00 p. m.—Parisian Quintet. KGO.
9:30 p. m.—The Three Boys. KGO.
10:00 p. m.—Cotton Blossom Minstrels. KHQ, KFI, KSL.
11:00 p. m.—Musical Musketeers. KHQ, KOMO, KPO.
11:00 p. m.—Henry Halstead's Hotel St. Francis Dance Orchestra. KGO.

THURSDAY, OCTOBER 24

9:45 a. m.—Betty Crocker Gold Medal Home Service Talks. KGO, KHQ, KOMO, KGW, KFI.
10:00 a. m.—"Woman's Magazine of the Air." KGO, KHQ, KOMO, KGW, KPO, KFI.
11:00 a. m.—Standard School Broadcasts. KGO, KHQ, KOMO, KGW, KPO, KFI.
11:45 a. m.—Rembrandt Trio. KGO.
3:00 p. m.—House of Myths. KGO, KHQ, KOMO, KGW, KPO.
4:00 p. m.—Hotel St. Francis Salon Orchestra. KGO.
5:00 p. m.—Fleischmann Sunshine Hour. KGO, KHQ, KOMO, KGW, KPO.
6:00 p. m.—Stanislas Bem's Little Symphony. KGO.
7:00 p. m.—Halsey-Stuart program. KHQ, KOMO, KGW, KPO, KFI.
7:00 p. m.—The Olympians. KGO.
7:30 p. m.—Standard Symphony Hour. KGO, KHQ, KOMO, KGW, KFI.
8:30 p. m.—Max Dolin and His Klyctroneers. KGO, KHQ, KOMO, KGW, KPO, KFI, KSL, KOA.
9:00 p. m.—Memor' Lane. KGO, KGW.
9:30 p. m.—Two Piano Concert. KGO.
10:00 p. m.—NBC Green Room. KGO, KFI, (KPO, 10:30 to 11:00 p. m.).
11:00 p. m.—Musical Musketeers. KGO, KPO, (KOMO, 11:15 to 12:00 p. m.).

FRIDAY, OCTOBER 25

10:00 a. m.—Du Barry Radio program. KGO, KHQ, KOMO, KGW, KPO, KFI, KSL.
10:15 a. m.—James Whitcomb Riley Period. KGO.
11:30 a. m.—Rembrandt Trio. KGO.
1:00 p. m.—Pacific Little Symphony. KGO, KOMO.
3:30 p. m.—What's Happening in the World. KGO.
4:00 p. m.—Hotel St. Francis Salon Orchestra. KGO.
4:45 p. m.—"Back of the News in Washington." KGO, KOMO, KPO.
6:00 p. m.—Interwoven Pair. KGO, KHQ, KOMO, KGW, KPO, KFI.
6:30 p. m.—Philco's Theatre Memories. KGO, KHQ, KOMO, KGW, KPO, KFI.
7:00 p. m.—Armstrong Quakers. KGO, KHQ, KOMO, KGW, KFI.
7:30 p. m.—Armstrong program. KGO, KHQ, KOMO, KGW, KPO, KFI.
8:00 p. m.—"CA Hour." KGO, KHQ, KOMO, KGW, KPO, KFI.
9:00 p. m.—Borden program. KGO, KHQ, KOMO, KGW, KPO, KFI, KSL, KOA.
9:30 p. m.—Home Service Station Four. KGO, KHQ, KOMO, KGW, KPO, KFI.
10:00 p. m.—"In the Parlor." KHQ, KFI, KOA, KGO.
10:30 p. m.—"The Nomads." KHQ, KFI, KOA, KGO.
(Continued on Page 82)

"Hear It Better on a Sterling Radio"

**Every Proven
Radio Feature
Is
Incorporated
In the New
1930**



BROWNING-DRAKE

The soundly engineered Browning-Drake radio receivers were designed for the musically minded people who desire perfectly reproduced programs. Those who demand the best that radio has to offer in sound, beauty, distant reception and selectivity. You must see and hear this remarkable radio to appreciate it.

Go to your nearest dealer—Now—for a demonstration.

Thoroughly in keeping with the superiority of Browning-Drake Radio, this large console is an article of furniture of which you can be justly proud. It is exquisitely designed with Australian Velvanwood paneling, in satin Duco finish and presents a beauty of appearance that conforms with the quality of the instrument itself.

*Model 67—\$183.50, less tubes
Model 56—\$188.50, less tubes*

Southern California and Arizona Distributor

Browning-Drake Sales Co.

1319 S. Maple St.

WEStmore 8101

Los Angeles



DICK RICKARD

KHJ Los Angeles, Calif.—900 Kc.

1000 WATTS—333.1 METERS
 Don Lee Bldg., 7th and Bixel Sts. Owned and Operated by Don Lee
 Calif. Dist. for Cadillac and LaSalle. Phone VA. 7111.

Glen R. Dolberg
 Manager
 Raymond Paige
 Musical Director
 Charles L. Shepherd
 Conductor
 C. M. C. Raymond
 Commercial Director
 Chief Engineer of the Don
 Harold Peery
 Dick Creedon
 Director of Features
 Lee Broadcasting System
 Ernest G. Underwood
 Technical Director
 Lindsay MacHarrle
 Chief Announcer

DAILY EXCEPT SUNDAY

- 7:00 a. m.—Physical Culture Period.
- 7:30 a. m.—N. Y. Stock Exchange Quotations, courtesy Walsh, O'Connor & Co.
- 9:15 a. m.—Late Recordings.
- 10:00 a. m.—Agnes White, "At Our House" (ex. Sat.).
- 12:00 noon—L. A. Biltmore Hotel Concert Orchestra.
- 12:30 p. m.—World-wide News, courtesy L. A. Times.
- 12:45 p. m.—Organ Recital, Leigh Harline (ex. Wed.).
- 1:30 p. m.—Charlie Wellman.
- 2:00 p. m.—H. H. Walker Fada Radio program (ex. Sat.).
- 3:00 p. m.—Lecture Period.
- 4:00 p. m.—Melody Masters (ex. Sat. and Sun.).
- 5:00 p. m.—Story Man and his Air Castle (ex. Sat.).
- 5:30 p. m.—Hank Howe's Dance Band.
- 6:45 p. m.—World-wide News, courtesy L. A. Times.
- 10:00 p. m.—Earl Burnett's L. A. Biltmore Hotel Concert Orch. and Intermission, courtesy Standard Oil.
- 12:00 midnight—Organ and Instrumental Trio, featuring Wesley Tourtelotte.

SUNDAY, OCTOBER 20

- 8:00 a. m.—Recordings.
- 9:00 a. m.—Pacific States Savings & Loan Co. (from KFRC).
- 11:00 a. m.—Morning Services, First M. E. Church.
- 12:30 p. m.—Terpezzone Co. program.
- 1:30 p. m.—Solist, program from KFRC.
- 2:00 p. m.—McKeesson & Robbins program (CBS).
- 2:30 p. m.—Recordings.
- 3:15 p. m.—Art Fadden, from KFRC.
- 4:00 p. m.—Colonial Dames program.
- 4:15 p. m.—Recordings.
- 4:30 p. m.—Rabbi Edgar Magnin—Inspirational talk.
- 5:00 p. m.—Tea Time Three, from KFRC.
- 5:30 p. m.—Sonatron program, CBS.
- 6:00 p. m.—Majestic program (CBS).
- 7:00 p. m.—Evening Service from First M. E. Church.
- 8:00 p. m.—Concert program from KFRC.
- 11:00 p. m.—Organ and Trio.

MONDAY, OCTOBER 21

- 8:00 a. m.—"The Alarm Clock."
- 9:15 a. m.—Mme. Jeanne Forest, French soprano.
- 9:30 p. m.—Julie Wintz Orchestra (CBS).
- 11:00 a. m.—Patterns and Prints (CBS).
- 11:30 a. m.—Jackson-Bell Radio Sales Co.
- 11:45 a. m.—Normalizer Sales Syndicate.
- 3:00 p. m.—Colonial Dames.
- 3:15 p. m.—Western Air Express.
- 3:30 p. m.—Matthew Murray, "Home Problems."
- 3:45 p. m.—Spanish Lesson.
- 4:00 p. m.—"Chasin' The Blues."
- 5:30 p. m.—Hank Howe's Dance Band.
- 5:45 p. m.—Las-Stick program.
- 6:00 p. m.—Charlie Hamp, S & W prog. from KFRC.
- 6:30 p. m.—Organ recital.
- 7:00 p. m.—Don Lee Symphony.
- 7:30 p. m.—Silverwood program.
- 8:00 p. m.—Jamboree from KFRC, courtesy Golden State Milk Products Co.
- 10:00 p. m.—Anson Weeks' orchestra from KFRC.
- 11:00 p. m.—Biltmore orchestra.

TUESDAY, OCTOBER 15

- 8:00 a. m.—The Early Birds to KFRC.
- 9:00 a. m.—Breakfast Nook Philosophy.
- 9:30 a. m.—Julie Wintz orchestra.
- 11:00 a. m.—Charlie Hamp, S & W prog. from KFRC.
- 3:00 p. m.—Safety Conference.
- 3:15 p. m.—Auto Club.
- 3:30 p. m.—Midnight Misslon.
- 3:45 p. m.—Dr. Frank McCoy.
- 4:00 p. m.—Melody Masters, courtesy Desmond's.
- 6:00 p. m.—Old Gold program (CBS).
- 7:00 p. m.—U. S. Rubber Co. program.
- 7:30 p. m.—Pelton Motor Co. program.
- 8:00 p. m.—Pac. States Sav. & Loan Co. program.
- 9:00 p. m.—L. A. Young Spring and Wire program. from KFRC.
- 9:30 p. m.—Raybestos program from KFRC.

WEDNESDAY, OCTOBER 23

- 8:00 a. m.—"Alarm Clock."
- 9:00 a. m.—Columbia Noon Day Club (CBS).
- 9:30 a. m.—Julie Wintz orchestra (CBS).
- 11:00 a. m.—Patterns in Prints (CBS).
- 11:45 a. m.—Normalizer Sales Co.
- 12:45 p. m.—Kiwanis Luncheon from Biltmore.
- 3:00 p. m.—Fred C. McNabb, Garden Talk.
- 4:30 p. m.—Story Man.
- 5:00 p. m.—Voice of Columbia (CBS).
- 6:00 p. m.—Charlie Hamp, S & W prog. from KFRC.
- 7:00 p. m.—Kooster (CBS).
- 7:30 p. m.—Don Lee Symphony Orchestra.
- 8:00 p. m.—Movie Club.
- 9:00 p. m.—Chanslor & Lyon's Zenith program.
- 9:30 p. m.—Gillilan program (Symphony concert).

THURSDAY, OCTOBER 24

- 8:00 a. m.—"Early Birds."
- 9:00 a. m.—Breakfast Nook Philosophy.
- 9:30 a. m.—Julie Wintz orchestra (CBS).
- 11:00 a. m.—Charlie Hamp, S & W prog. from KFRC.
- 11:30 a. m.—Jackson-Bell Radio Sales Co.
- 11:45 a. m.—Normalizer Sales Syndicate.
- 3:00 p. m.—Walter Brown Murray.
- 3:30 p. m.—H. M. Robertson.
- 3:45 p. m.—Dr. Philip Lovell.
- 6:00 p. m.—Wesley Tourtelotte, organ recital.
- 7:00 p. m.—Sierra Symphonists, Raymond Paige conducting.
- 8:00 p. m.—Richfield Oil Co. program.
- 9:00 p. m.—Don Lee Symphony.

FRIDAY, OCTOBER 25

- 8:00 a. m.—"Alarm Clock."
- 9:00 a. m.—Recordings.
- 9:45 a. m.—Dr. Paul J. Dorosh.
- 11:00 a. m.—Normalizer Sales Syndicate.
- 3:00 p. m.—Eric Mayne, Shakespearean Readings.
- 3:15 p. m.—School program.
- 3:30 p. m.—Council of International Relations.
- 4:00 p. m.—Elvia Allman's Surprise Package.
- 6:00 p. m.—Charlie Hamp, S & W prog. from KFRC.
- 7:00 p. m.—Pelton Motor Co.
- 7:30 p. m.—Desmond's program.
- 8:00 p. m.—Forest Lawn Memorial Park.
- 9:00 p. m.—"True Story" Hour (CBS).

SATURDAY, OCTOBER 26

- 8:00 a. m.—Adventures of Helen & Mary, CBS.
- 8:30 a. m.—Saturday Synopaters, CBS.
- 9:00 a. m.—"Breakfast Nook Philosophy."
- 9:45 a. m.—Louis F. Klein, Harmonica.
- 10:00 a. m.—Leslie Brigham, baritone, and Mona Content, accompanist.
- 2:00 p. m.—Football Game from Coliseum U.C.L.A. vs. Pomona, courtesy W. P. Fuller Paint Co.
- 5:00 p. m.—Nit wit Hour (CBS).
- 5:30 p. m.—Romancers (CBS).
- 6:00 p. m.—Graybar, CBS.
- 6:30 p. m.—Organ Recital.
- 7:00 p. m.—Paramount Hour (CBS).
- 8:00 p. m.—Raymond Paige's orchestra.
- 9:00 p. m.—Night Court.



Its Service
 with a Smile

MAJESTIC
 at

WATSON RADIO CO.
 AXridge 1581 ... 4411 59 Broadway.



Power! Selectivity! Tone!

That's What You Get in the New Model 60

ATWATER KENT SCREEN-GRID RADIO

All this is made possible because it has

3 SCREEN GRID TUBES

and the proper circuit to handle this power.

Come in today and let us explain it all to you.



USUAL BIRCH-SMITH TERMS

Birch-Smith Furniture Co

737 South Hill St. (near 8th)

TRinity 4121

The essential features of these programs are identical with those sent us by the stations



NAYLOR ROGERS

KNX Hollywood, Calif.—1050 Kc.

Authorized Power, 5000 WATTS—285.5 METERS—Los Angeles
Evening Express
Paramount-Lasky Studio, 5555 Marathon
"The Voice of Hollywood"

Phone HEmpstead 4101

Naylor Rogers
Director-Manager

Glen Rice
Assistant Manager

N. D. Garver
Technical Engineer

DAILY EXCEPT SUNDAY

- 6:45 a. m.—"Early Birds" Exercises given by Dr. P. M. Seixas, courtesy Sierra Club Beverage Co.
7:15 a. m.—"Pep and Vigor" Exercises given by Dr. P. M. Seixas, courtesy Sierra Club Beverage Co.
7:45 a. m.—"Home Folks" Exercises given by Dr. P. M. Seixas, courtesy Sierra Club Beverage Co.
8:55 a. m.—Inspirational talk and morning prayer.
8:55 a. m.—Time Signals from Washington, D. C.
9:30 a. m.—Radio Shopping News conducted by Carey Preston Rittmeister.
10:00 a. m.—Town Crier of the Day's Morning Message.
10:30 a. m.—Kate Brew Vaughn, director of Household Economics Dept. of Express (ex. Fri. and Sat.).
12:00 noon—Time Signals, courtesy Bulova Watch Co.
12:00 noon—Musical program.
1:30 p. m.—The Bookworm, the reading of interesting books.
2:00 p. m.—Program courtesy L. A. Evening Express Classified Advertising Dept.—records and announcements.
2:30 p. m.—Lost and Found; Stock Market reports.
4:30 p. m.—C. P. R.'s musical program.
5:00 p. m.—Travelogue.
5:15 p. m.—"Own Your Own Home," Chet Mitten-dorf.
5:45 p. m.—Town Crier's Timely Amusement Tips.
6:00 p. m.—Organ program by Wright Whitlock from Wurlitzer Studio in Ambassador Hotel.
7:00 and 10:00 p. m.—Time Signals, courtesy Bulova Watch Co., 5th Ave., N. Y.
10:00 p. m.—Hotel Ambassador; Ted Lewis and his Cocoanut Grove Orch., courtesy Durant Motor Car Dealers.
11:00 p. m.—Hotel Ambassador; Ted Lewis and his Cocoanut Grove Orchestra.
12:00 midnight—Program, courtesy of the Dorado Club Silver Fizz.

SUNDAY, OCTOBER 20

- 8:30 a. m.—Musical program by Maddux, Inc.
11:00 a. m.—First Presbyterian Church of Hollywood.
12:30 p. m.—"Automobile Buyers' Guide" musical program.
1:00 p. m.—International Bible Students Association.
2:00 p. m.—City Park musical program.
4:00 p. m.—Roberts Golden State Band.
4:30 p. m.—First Radio Church of the Air.
6:00 p. m.—Talk by Ernest Holmes of the Institute of Religious Science and Philosophy.
6:30 p. m.—Dr. Theo. Curtis Abel of the Hollywood Humanist Society.
7:00 p. m.—Lubovlski Trio; Calmon Lubovlski, master violinist; Claire Mellouno, pianist; Walter V. Ferner, 'cellist.
8:00 p. m.—First Presbyterian Church of Hollywood.
9:00 p. m.—Recordings.
9:05 p. m.—Walker's, Inc., courtesy program.
MONDAY, OCTOBER 21
11:15 a. m.—Madame Marie, beauty talk.
11:30 a. m.—Maytag "So-A-Tone" Broadcast.
3:30 p. m.—Howard Clark's Blue Monday Frolic.
7:00 p. m.—KNX Feature Artists.

- 7:30 p. m.—One-act Play, directed by Georgia Fifield, through the courtesy of the Overall Furniture Co.
8:00 p. m.—KNX Feature Artists.
9:30 p. m.—Bremer-Tully Manufacturing program, presenting "So-A-Tone" program.

TUESDAY, OCTOBER 22

- 9:00 a. m.—Georgia O. George, beauty talk
11:00 a. m.—Marmola "So-A-Tone" Broadcast.
11:15 a. m.—Talk on Better Speech by Mrs. David Hugh.
3:00 p. m.—French Lessons by Edgard Leon.
3:30 p. m.—Joyce Coad, Express Million Dollar Contest Winner.
7:00 p. m.—Talk by Dr. Mars Baumgardt on "Popular Science."
7:30 p. m.—Record program.
8:00 p. m.—Tom and His Mule Hercules.
9:00 p. m.—Maytag "So-A-Tone" Broadcast.
9:30 p. m.—KNX Feature program.

WEDNESDAY, OCTOBER 23

- 9:00 a. m.—Georgia O. George, Beauty Talk.
11:00 a. m.—KNX Clinic of the Air.
11:30 a. m.—Record program.
11:45 a. m.—Marmola "So-A-Tone" Broadcast.
12:30 p. m.—Bell Laboratories.
3:00 p. m.—KNX Clinic of the Air.
7:00 p. m.—Mr. and Mrs. Radio Skit, featuring Georgia Fifield and Eddie Albright.
7:30 p. m.—Brunswick-Balke-Collender Co., courtesy program.
8:00 p. m.—Bert Butterworth and His "Airdales."
8:30 p. m.—"Navigator Hour."
9:30 p. m.—KNX Feature Artists.

THURSDAY, OCTOBER 24

- 11:00 a. m.—Marmola "So-A-Tone" Broadcast.
11:30 a. m.—Firemen's Orchestra, courtesy program.
3:00 p. m.—French Lessons by Edgard Leon.
3:30 p. m.—Louise Johnson, astro-analyst.
7:00 p. m.—Ichimato and Scratchemata, two Nipponese Boys.
8:00 p. m.—Lyric Radio Co., re-broadcast from KFWB.
8:30 p. m.—AMORC College of San Jose, courtesy program.
9:00 p. m.—Rio Grande Oil Co., courtesy program.
9:30 p. m.—KNX Feature Artists.

FRIDAY, OCTOBER 25

- 8:30 a. m.—"A Menu for Sunday Dinner," by Kate Brew Vaughn.
9:15 a. m.—Glidden Co., record program.
10:30 a. m.—Madame Marie Beauty Talk.
11:00 a. m.—Marmola "So-A-Tone" Broadcast.
12:30 p. m.—Bell Laboratories, represented by H. F. Allen.
3:30 p. m.—Federation of Woman's Club program.
7:00 p. m.—Bundy & Albright courtesy program.
7:30 p. m.—Pacific System of Homes, Inc.
8:00 p. m.—Royal Order of Optimistic Do-Nuts.
9:00 p. m.—"Lion Tamers."
9:45 p. m.—Broadcasting the Main Event from the Hollywood Legion Stadium.

SATURDAY, OCTOBER 26

- 10:30 a. m.—Records and Announcements.
12:00 noon—Bundy & Albright courtesy program.
12:30 p. m.—C. P. R.'s Shopping News.
1:00 p. m.—First Radio Church of the Air.
2:00 p. m.—U. C. L. A. vs. Pomona College Football Game from the Coliseum.
7:00 p. m.—Paramount Publix Hour, Broadcasting over the Columbia Chain.
8:00 p. m.—Announcements of the Services of the Leading Los Angeles Churches.
8:05 p. m.—KNX Feature Artists.

ATWATER KENT
IN HOLLYWOOD
Expert Radio Service



HOLLY-ANGELES
MUSIC CO.

Call GR 4876

6611 HOLLYWOOD BLVD.

OF COURSE--

EVEREADY
RADIO

Has

SCREEN-GRID TUBES

CONSTANT-GAIN CIRCUIT

ELECTRO-DYNAMIC SPEAKER

and All of the Worthwhile Ultra-Modern
Improvements in Radio Receiver Design

BUT—

These Features Alone Do Not Make a Fine Radio.
The Superiority of Eveready is Due to

ADVANCED ENGINEERING

THE FINEST MATERIALS OBTAINABLE

HIGHEST STANDARDS OF PRECISION IN
MANUFACTURE AND ASSEMBLY

RIGID PERFORMANCE TESTS

Features which make Eveready Radio a high grade
piece of machinery of long life, dependable service
and consistent performance.

Wholesale Distributors

REIMAN WHOLESALE ELECTRIC CO.

Phone MEtropolitan 4280

218-228 East Third St.

Los Angeles, California



RULES

1. Contest open to any Majestic owner living in Southern California or Arizona.
2. Majestic dealers, their relatives or employees are not eligible to enter station logs for prizes.
3. Letters must state Serial number of Majestic radio owned and name of dealer from whom purchased.
4. Station list must show date and time station was heard and record of selections broadcast by station at that time.
5. Prizes will be awarded, not only on a basis of the size of the log but will take into consideration location, interference conditions, time, etc. The longest log from a good location may be of less merit than a shorter one from a more difficult location.
6. Logs entered by contestants early in the contest may be supplemented by subsequent lists later in the "DX" season.

JUDGES:

K. G. Ormiston, Tech. Ed. Radio Doings
 Naylor Rogers, Mgr. Radio Station KNX
 Al Farquharson, Sec. L.A. Radio Trades Assn.

PRIZES

WEEKLY PRIZE: Bouldin Cage Antenna
 Value \$15

GRAND PRIZES

To Be Awarded at End of Contest

FIRST PRIZE - \$100
SECOND PRIZE - \$50
THIRD PRIZE - \$25



Open to All in Southern California

Realizing that there are thousands of "distance fans" in Southern California and more than 271 carloads of the distributors of Majestic Doings where these Majestic each other for the honor of Champion."

And it will not be an empty owner living in Southern California admits the best "distant record" awarded a Bouldin Cage many distance records have been is valued at \$15.00.

Then, on May 1st, 1930, we prize winners the three grand receive prizes of \$100, \$50 and Winning letters will be published.

Read carefully the rules on panel. Then tune up your stations. Do not be discouraged of stations. The small list may win.

Address all letters submitting logs to Judges, care Radio Doings

UNGAR &

Distributors in Southern California
 1363 1/2 S. Figueroa St.

"DX" Contest

CINCINNATI PITTSBURG PHILADELPHIA SCHEENECTADY NEW YORK

LONG DISTANCE

Majestic Radio Owners California and Arizona

Thousands of genuine, dyed-in-the-wood California and Arizona who have purchased Majestic Radios in 65 weeks, provide here a page in Radio Owners where owners can compete with the title of "Majestic 'DX' Champion."

To the Majestic radio owners in California or Arizona who submit a "log each week, will be selected, an aerial with which to be made. This weekly prize

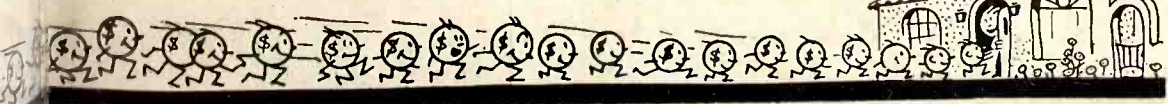
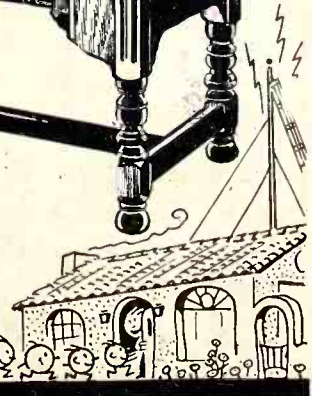
will select from these weekly prize winners. These will receive \$25 in cash, respectively, published on this page each week.

The contest set forth in the Majestic and log the distant received at the length of your list prepared from a difficult location

Write this contest to Majestic DX Contest
E. Pico Street, Los Angeles.

WATSON, INC.
California and Arizona
LOS ANGELES

Model 91
MAJESTIC CONSOLE
The new Majestic is the most powerful and selective radio receiver ever built. Seven tubes with eighth rectifier tube. Majestic power ballast to govern line voltage. Ask any Majestic dealer to tell you the exclusive features that make Majestic a prize winner for "distant reception." No obligation, of course.
Model 91 **\$159** Complete with Majestic Tubes



The essential features of these programs are identical with those sent by the stations.



KMTR

Hollywood, Calif.—570 Kc.

500 WATTS—526.0 METERS
 KMTR RADIO STATION, 1025 N. Highland Ave., HOLLY 3028
 The Official Broadcasting Station of the
 Los Angeles Evening Herald

Harry Von Zell
 Manager
 Loren Powell
 Musical Director
 Eugene Inge
 Press Relations
 Yalo Whitney
 Truman Bradley
 Announcers
 K. G. Ormiston
 Technical Supervisor

TRUMAN BRADLEY

DAILY EXCEPT SUNDAY

- 6:00 a. m.—The Early Risers' Hour.
- 6:55 a. m.—Ocean Tides, weather, fishing bulletins.
- 7:00 a. m.—New Idea Man's Wholesome Food Breakfast Club.
- 9:00 a. m.—Mildred Kitchen, Home Economics.
- 9:15 a. m.—Around the Clock with Music.
- 10:15 a. m.—Spanish program—Senorita Lujan.
- 11:00 a. m.—Banjo Boys.
- 12:00 noon—News bulletins.
- 12:15 p. m.—Prosperity Hour.
- 1:15 p. m.—Louise Howatt—Happiness Hour.
- 2:00 p. m.—Timely Topics.
- 2:15 p. m.—The Melodions.
- 3:00 p. m.—Melodions and Blue Jays.
- 3:15 p. m.—Blue Jays.
- 4:00 p. m.—Prosperity program.
- 5:45 p. m.—News bulletins.
- 6:00 p. m.—Miniature String Players (ex. Saturday).
- 10:00 p. m.—Laughner Harris Orchestra—Paul Perrot Cafe.
- 11:00 p. m.—Eight Ball and Charlie Lung.

SUNDAY, OCTOBER 20

- 6:30 a. m.—The Early Riser's Hour.
- 9:00 a. m.—Driscoll's requests.
- 12:00 noon—Musical program.
- 3:00 p. m.—Wright's Musical program.
- 6:00 p. m.—Miniature String Players.
- 7:00 p. m.—Song recital.
- 7:30 p. m.—The Composers' Hour, with the Symphony Orchestra in the works of the Great Masters.
- 8:30 p. m.—"From Behind the Footlights," featuring the Symphony Orchestra and Mixed Quartet.
- 9:30 p. m.—"Vibrant Melodies."
- 10:00 p. m.—News bulletins.
- 10:15 p. m.—Happy Harris Geise—Request program.

MONDAY, OCTOBER 21

- 9:30 a. m.—Trade and Travel Talk.
- 10:00 a. m.—Old Man Opportunity.
- 11:30 a. m.—Wedgewood Nowell.

- 7:00 p. m.—Chamber of Commerce Talk.
- 7:15 p. m.—"Parade of the Features."
- 8:00 p. m.—Symphony Orchestra and Mixed Quartet.
- 9:00 p. m.—Recreated Prizefights.
- 9:30 p. m.—The Rhythm Kings.

TUESDAY, OCTOBER 22

- 11:30 a. m.—New Idea Man's Vacuum program.
- 7:00 p. m.—"The Evolution of the Dance."
- 8:00 p. m.—The Rhythm Kings, Blue Jays and Melodions.
- 9:00 p. m.—Loren Powell and his All Solo Orchestra.

WEDNESDAY, OCTOBER 23

- 9:30 a. m.—Trade and Travel Talk.
- 10:00 a. m.—Old Man Opportunity.
- 1:15 p. m.—Primer for Farmers.
- 7:00 p. m.—"The Highlights of Grand and Light Opera," featuring Loren Powell's Symphony Orchestra and Mixed Quartet.
- 8:00 p. m.—The Rhythm Kings, Blue Jays and Melodions.
- 9:00 p. m.—"Moonlight in Dixie," featuring Negro Spirituals.

THURSDAY, OCTOBER 24

- 7:00 p. m.—"Famous Melodies by Famous Composers."
- 8:00 p. m.—The Rhythm Kings, Blue Jays and Melodions.
- 9:00 p. m.—Recreated Prizefights.
- 9:30 p. m.—Happy Harry Geise in songs, piano and nonsense.

FRIDAY, OCTOBER 25

- 9:30 a. m.—Trade and Travel Talk.
- 10:00 a. m.—Old Man Opportunity.
- 11:30 a. m.—New Idea Man's Vacuum program.
- 7:00 p. m.—The Black Forest Ensemble.
- 7:15 p. m.—The Concert Hall (Symphony Orch. & soprano).
- 8:00 p. m.—Million Dollar Theater Orchestra.
- 8:30 p. m.—The Serenaders (Orchestra and songs).
- 9:00 p. m.—The Musketeers.
- 9:30 p. m.—The Melody Makers.

SATURDAY, OCTOBER 26

- 10:00 a. m.—Musical Bits.
- 10:15 a. m.—Spanish program.
- 2:00 p. m.—Football Game from Coliseum—U.C.L.A. vs. Pomona College.
- 6:00 p. m.—The Melodions.
- 7:00 p. m.—Sports Hour.
- 8:30 p. m.—Eddie Nunn Golf Talk.
- 8:45 p. m.—The Blue Jays.
- 9:00 p. m.—"On with the Dance"—Laughner Harris Orchestra.
- 11:00 p. m.—Eight Ball and Charlie Lung.
- 12:00 midnight—Happy Harry's Midnight Frolic.



DAVE WARD

KELW

Burbank, Calif.—780 Kc.

MAGNOLIA PARK—500 WATTS—384.4 METERS
 "The White Spot of the San Fernando Valley"
 Phones: Burbank 1601—GRanite 3193

Earl L. White, Owner

Dave Ward
 Announcer

Mrs. E. C. Morrissey
 Program Manager

H. W. Cole
 Business Manager

DAILY EXCEPT SUNDAY

- 10:00 a. m.—Frank and What's His Name.
 - 12:00 noon.—World news and Panatropé.
 - 5:00 p. m.—Panatropé.
 - 5:45 p. m.—Morris-Hill Ideas.
 - 6:00 p. m.—Twilight Club Entertainers.
- SUNDAY, OCTOBER 20
- 10:00 a. m.—First Baptist Church, Glendale.
 - 5:00 p. m.—Vesper Services by the Episcopal Churches.
 - 6:00 p. m.—First Baptist Church, Glendale.

MONDAY, OCTOBER 21

- 11:00 a. m.—Rev. Ethel Duncan, Questions and Answers.
- 7:00 p. m.—Dolce Quartet.

TUESDAY, OCTOBER 22

- 11:00 a. m.—Bess Kilmer's Helpful Hints to Housewives.
- 11:30 a. m.—World News and Panatropé.
- 7:00 p. m.—Irmalee Campbell, soprano; Charles King, tenor; Cyril Godwin Duo.

WEDNESDAY, OCTOBER 23

- 11:00 a. m.—World News and Panatropé.
- 7:00 p. m.—California String Quartet.

THURSDAY, OCTOBER 24

- 11:00 a. m.—Rev. Ethel Duncan, Questions and Answers.
- 11:30 a. m.—Bess Kilmer's Helpful Hints to Housewives.
- 7:00 p. m.—Cyril Godwin Duo; Erna Vavelle, soprano.

FRIDAY, OCTOBER 25

- 11:00 a. m.—World News and Panatropé.
- 7:00 p. m.—Earl Meeker, baritone; Neapolitan Trio.

SATURDAY, OCTOBER 26

- 11:00 a. m.—World News and Panatropé.
- 7:00 p. m.—Artists Instrumental Quartet.

The New Stewart-Warner Radio

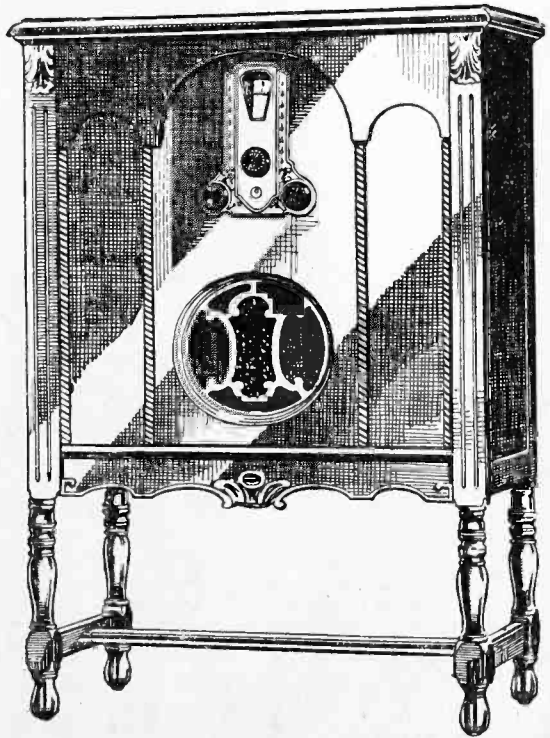
Greatest of All
Values—the New

**STEWART-
WARNER
RADIO**

Five Years Ahead!

Even has a Television
plug-in.

No wonder it's called
*"The Set with the
Punch"*



Your Choice of Either
Balanced Bridge or
Screen Grid Circuits

Jacobean Model No. 35
\$147.00, *Less Tubes*

Other Models From
\$92.25 to \$170.50

C. A. ROESCH & CO., INC.
Operating

STEWART-WARNER SALES CO.

1101 S. Hope St.

WEstmore 2411

LOS ANGELES, CALIF.

"Distributors for Southern California and Arizona"

The essential features of these programs are identical with those sent us by the stations



JERRY KING

KFWB Hollywood, Calif.—950 Kc.

1000 WATTS—315.6 METERS

WARNER BROS. MOTION PICTURE STUDIOS
Warner Brothers' Theater, 6425 Hollywood Boulevard

Phone Ho. 0315

Gerald L. King
Manager

Wm. Ray
Assistant Manager

Florence Israel
Program Arranger

Harry Myers
Chief Technician

DAILY EXCEPT SUNDAY

- 9:00 a. m.—Radio Varieties.
12:15 p. m.—KPSN.
12:30 p. m.—Radio Varieties.
4:30 p. m.—Radio Varieties.
6:00 p. m.—KPSN.
6:20 p. m.—Late Recordings.
6:30 p. m.—Harry Jackson and Entertainers.
8:00 p. m.—Time Signals, Bulova Watch Co.

SUNDAY, OCTOBER 20

- 8:30 a. m.—The Funny Paper Man.
9:00 p. m.—Late recordings.
6:30 p. m.—Harry Jackson and his Pig'n Whistle Entertainers.
7:00 p. m.—Hollywood Athletic Club orchestra.
7:30 p. m.—Burr McIntosh, the Cheerful Philosopher.
8:00 p. m.—KFWB Concert Orchestra and soloists.
9:00 p. m.—Bill's Ragtime Review.

MONDAY, OCTOBER 21

- 10:00 a. m.—Home Economics talk by Prudence Penny.
11:15 a. m.—Dale Imes' Melody Trio.
2:10 p. m.—Art Pabst and his Banjo in old-time numbers.
4:15-6:00 p. m.—Radio Varieties program.
7:00 p. m.—Julius K. Johnston at the Wurlitzer Vitaphone Recording Organ.
7:30 p. m.—Jean Leonard, "Wizard of the Ivories."
7:45 p. m.—Sports talk by R. W. Shirey.
8:00 p. m.—First National Studios; Leo Forbstein and his Vitaphone Recording orchestra; First National stars and players.
9:00 p. m.—Hollywood String Quintet.
9:30 p. m.—Don Warner's Dance orchestra.
10:00 p. m.—George Olson and his music from the Roosevelt Hotel, Hollywood.
10:30 p. m.—Prof. Moore and his Montmartre Cafe orch.
11:30 p. m.—George Olson and his music from the Roosevelt Hotel.

TUESDAY, OCTOBER 22

- 11:15 a. m.—Dale Imes' Melody Trio.
7:00 p. m.—Hollywood Athletic Club orchestra
7:30 p. m.—Eskimo Pie Corporation program.
8:00 p. m.—Margit Hegedus String Ensemble.
8:30 p. m.—Herbert Heyes Players in 30-minute playlet.
9:00 p. m.—The Edgeworth Plantation Club.
9:30 p. m.—Main bout from the Olympic Auditorium.
11:30 p. m.—Prof. Moore and his Montmartre Cafe orch.

WEDNESDAY, OCTOBER 23

- 8:00 a. m.—The Breakfast Club, by remote control.
10:00 a. m.—Prudence Penny of the Examiner.
11:45 p. m.—Dale Imes' Melody Trio.

THURSDAY, OCTOBER 24

- 11:15 p. m.—Dale Imes' Melody Trio.
7:00 p. m.—Ray Martinez and his concert orchestra.
7:30 p. m.—Jean Cowan, "Hollywood's Pep and Personality Girl."
7:45 p. m.—Sports talk by R. W. Shirey.
8:00 p. m.—The Lyric Entertainers, through courtesy of Listenwalter & Gough.
8:30 p. m.—Gilmore Oil Company.
9:00 p. m.—Seventh episode of the mystery serial, "Who Killed the Caretaker."
9:30 p. m.—Hollywood String Quintet;
10:00 p. m.—George Olson and his music from Roosevelt Hotel, Hollywood.
10:30 p. m.—Prof. Moore and his orchestra from Montmartre Cafe, Hollywood.

FRIDAY, OCTOBER 25

- 9:00 a. m.—Harmony Hour.
10:00 a. m.—Prudence Penny of the Examiner.
11:45 a. m.—Dale Imes' Melody Trio.
1:15 p. m.—Prof. Moore's orchestra from the Montmartre Cafe.
4:30-6:00 p. m.—Radio Varieties.
7:00 p. m.—Rhythm Boys; Esther White and Lucky Wilber, harmony numbers.
8:00 p. m.—KFWB Concert Orchestra; Tudor Williams.
9:00 p. m.—Yascha Borowsky's Royal Russians; Tamara Shavrova, Russian soprano.
10:00 p. m.—George Olson and his music from Roosevelt Hotel, Hollywood.
11:00 p. m.—Prof. Moore and his orchestra, from Montmartre Cafe, Hollywood.
12:00 midnight—Julius K. Johnston at the Wurlitzer Vitaphone Recording Organ.

SATURDAY, OCTOBER 26

- 11:45 a. m.—Dale Imes' Melody Trio.
1:15 p. m.—Prof. Moore and his Montmartre Cafe orch.
2:15 p. m.—U.C.L.A. vs. Pomona College football game from L. A. Coliseum.
7:00 p. m.—Margit Hegedus String Ensemble; Vernon Rickard, tenor.
8:00 p. m.—MonaMotor Oilers (dance band) and soloists.
9:00 p. m.—KFWB Concert Orchestra.
9:30 p. m.—Prof. Moore and his orchestra, by remote control from the Montmartre Cafe.
10:00 p. m.—George Olson and his music by remote control from the Hollywood Roosevelt Hotel.
10:30 p. m.—Prof. Moore and his orchestra from Montmartre Cafe, Hollywood.

Hear It Better On A

Sterling Radio

1930 WILL BE A STERLING YEAR

California Wholesale Electric Co.
413-415 EAST ELEVENTH STREET, LOS ANGELES

TELEPHONES
WESTMORE 9205
WESTMORE 0824

Tower



EXERCISER and REDUCER

\$64⁵⁰*

Complete

CONSOLE MODEL



Everything—An Exerciser, A Reducer, An Investment In Better Health

Medical authorities and thousands of men and women testify to benefits gained through use of vibratory massage. Now you can regain slenderness and improved health at slight cost! \$64.50 is the new low price of the latest model Tower Exerciser and Reducer. Variable speed, adjustable stroke, complete in every detail.

WEST COAST FACTORY REPRESENTATIVE
Marshank Sales Co., Los Angeles
WEST COAST JOBBERS

Los Angeles:

Radio Supply Co. Leo J. Meyberg Co.
Reiman Wholesale Electric Co.

San Francisco:

Leo J. Meyberg Co. Fobes Supply Co.
United Radio Supplies Co.

Sacramento: Kimball-Upton Co.

TOWER MFG. CORP.

97 Brookline Ave.

Boston, Mass.

*Write jobber direct
for nearest dealer's
name.



GORDON SMITH

KGFJ Los Angeles, Calif.—1420 Kc.

Ben S. McGlashan
Owner
Duke Hancock
Assistant Manager
Thelma Kirchner
Program Director
M. B. Cosby
Night Owl
Phone:
Westmore 4620

100 WATTS
211.1 METERS—Washington Blvd. at Oak St.
"Keeping Good Folks Joyful Twenty-four Hours a Day"

SUNDAY, OCTOBER 20

- DAILY EXCEPT SUNDAY**
12:00 midnight—Apex Nite Club by remote control.
1:00 a. m.—Nite Owl program, KFOX.
7:00 a. m.—Gedunkers Club.
7:00 a. m.—Madame Lawrye's Goodwill program.
8:30 a. m.—Gordon Smith's Shopping Guide;
9:30 a. m.—Rango the Mystery Man.
10:00 a. m.—Dr. Dean Health Clinic.
10:30 a. m.—Organ Recital, remote, KFOX.
11:00 a. m.—Classical Recordings.
1:00 p. m.—Studio program.
2:00 p. m.—Don Lee program.
2:30 p. m.—Studio program.
4:00 p. m.—Majestic Radio program.
4:30 p. m.—Recordings.
5:00 p. m.—Market Reports; Organ remote KFOX.
5:30 p. m.—Variety program.
6:00 p. m.—Harmony Hawaiian Trio.
7:00 p. m.—Gordon Smith's Radiotising Service.
8:00 p. m.—Popular Trio.
9:30 p. m.—Curtis Mosby and His Dixieland Blue Blowers.
10:30 p. m.—Lani's Hawaiians.
11:00 p. m.—Majestic Ballroom by remote control.

- 12:00 midnight—Apex Nite Club by remote control.
1:00 a. m.—Nite Owl program.
7:00 a. m.—Recordings.
10:00 a. m.—Organ, remote, KFOX.
11:00 a. m.—Quality Serenaders; Don West, tenor; Blanche Cooper, pianist.
1:00 p. m.—Harmony Hawaiian Four; Gladys Parlish, blues; Blanche Cooper, pianist.
3:00 p. m.—Long Beach Municipal Band.
4:00 p. m.—Organ Recital, remote KFOX.
4:30 p. m.—Studio Ensemble; vocalist; Lella Isbell, pianist.
6:00 p. m.—Harmony Hawaiian Trio.
7:00 p. m.—Recordings.

MONDAY, OCTOBER 21

- 5:30 p. m.—Studio Orchestra.
7:00 p. m.—Nat Winecoff, ballads; Albert Keglovich.

TUESDAY, OCTOBER 22

- 3:00 p. m.—Organ Recital, remote KFOX.
5:30 p. m.—Hollywood Girls.
7:00 p. m.—Charlie Davis, uke; soloists;

WEDNESDAY, OCTOBER 23

- 3:30 p. m.—Long Beach Municipal Band.
7:00 p. m.—Nat Winecoff, ballads; Blanche Cooper,

THURSDAY, OCTOBER 24

- 5:30 p. m.—Studio Orchestra.
7:00 p. m.—Albert Keglovich, violinist; soloists;

FRIDAY, OCTOBER 25

- 3:00 p. m.—Organ Recital, remote KFOX.
5:30 p. m.—Hollywood Girls.
7:00 p. m.—Nat Winecoff, ballads; Blanche Cooper,

SATURDAY, OCTOBER 26

- 3:30 p. m.—Long Beach Municipal Band.
5:30 p. m.—Hollywood Girls.
7:00 p. m.—Charlie Davis, uke; Nat Winecoff,



SCOTT BRADLEY

K T M Santa Monica, Cal.—780 Kc.

Glenhall Taylor
Manager
Gordon Soule
Program Director
Scott Bradley
Musical Director
Ross Gibson
Presentation Department
Gerree Middleton
Press Relations

500 WATTS—384.4 METERS
Municipal Auditorium, Ocean Park, Santa Monica, Calif.
Los Angeles Studio: 3636 Beverly Blvd. EXposition 1341
Pickwick Broadcasting Corporation
Henry A. Hohman, General Manager.
Clarence B. Juneau, Chief Transmission Engineer

- DAILY EXCEPT SUNDAY**
6:00 a. m.—Records.
8:00 a. m.—Bert's Request program.
1:00 p. m.—Arthur Shaw, organist.
2:00 p. m.—Lola the Angel of the Air.
2:30 p. m.—Santa Monica Band Concert (ex. Mon.).
3:30 p. m.—Fowler's Merchant's Publicizing Review.
4:00 p. m.—Records.
11:05 p. m.—Coffee Dan's Frolic; Arthur Shaw
12:00 midnight—Records.

- 9:00 p. m.—Ocean Park Business Men's Assn.
9:15 p. m.—Sterns Duo.
9:30 p. m.—"Harlem."
10:00 p. m.—Bradley's Melodists.
10:30 p. m.—Popular vocalists.

TUESDAY, OCTOBER 22

- 4:45 p. m.—Tap Dancing Lesson.
8:00 p. m.—Gilmore Circus.
8:30 p. m.—Aba-Zaba Sweetmeats.
9:00 p. m.—Arthur Shaw, organ recital.
9:30 p. m.—Musical Comedy program;
10:30 p. m.—Musical Flyers; vocalists.

WEDNESDAY, OCTOBER 23

- 8:00 p. m.—Pipe Organ Recital; Arthur Shaw.
8:30 p. m.—Service Station Four.
9:00 p. m.—Bradley's Melodists.
10:00 p. m.—Musical Drama.

THURSDAY, OCTOBER 24

- 4:45 p. m.—Tap Dancing Lesson.
8:00 p. m.—"The Cobra"—Radio Mystery Play.
8:30 p. m.—Santa Monica Band Concert.
9:00 p. m.—Pickwick Travelers Around the World—
10:00 p. m.—Pickwick Nite Club.

FRIDAY, OCTOBER 25

- 8:00 p. m.—Hollywood Music Makers.
9:00 p. m.—Arthur Shaw, pipe organ recital.
9:30 p. m.—Miniature Symphony Hour.
10:30 p. m.—Musical Flyers Dance Band; vocalists.

SATURDAY, OCTOBER 26

- 4:45 p. m.—Tap Dancing Lesson.
8:00 p. m.—Santa Monica Band Concert.
8:30 p. m.—Surprise Package.
9:00 p. m.—Musical Flyers Dance Band; vocalists.
10:00 p. m.—Bradley's Melodists.

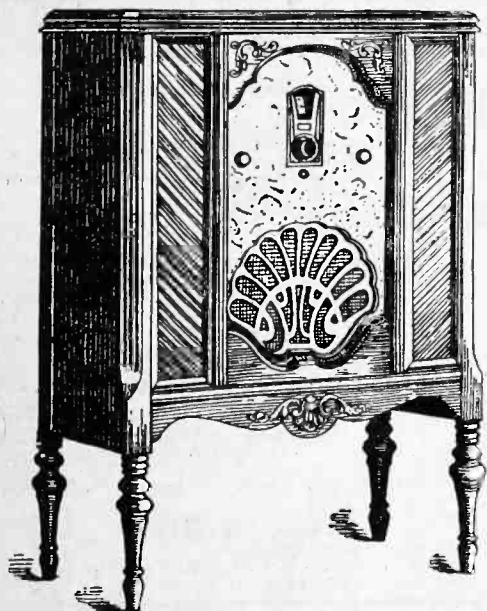
ATWATER KENT 60

The Most Selective Receiver on the Market Today

H. A. Everest

7406 MELROSE AVE. OREGON 4702

K. G. Landgraf



THE LOWBOY

Finished in bird's-eye maple and matched Oriental walnut.

Neutrodyne-Plus

\$139⁵⁰

Screen Grid

\$129⁵⁰

TUBES EXTRA

Complete range of models \$72 to \$215. Each furniture model is equipped with genuine *Electro-Dynamic Speaker* and *Acoustic Equalizers*, balanced to use **TWO** of the wonderful new 245 power tubes, push-pull.

**Remarkable
Selectivity
and Distance!**

**~~PHILCO~~
ALL ELECTRIC
RADIO S**

Are further advantages from Philco Balanced Units. Hundreds of owners of Philco Neutrodyne-Plus have been able to bring in Japan, Canada, Mexico, Cuba, Australia, etc. Location and weather conditions, of course, do make a difference. But even when reception is most difficult, owners praise Philco for its power to overcome obstacles that baffle other sets. And when conditions are good, Philco makes astounding performance records.

**~~PHILCO~~ *Balanced-Unit*
RADIO**

Pacific Coast Branches
SAN FRANCISCO
LOS ANGELES
PORTLAND
SEATTLE

Tune in on the Philco Hour, Friday Evenings, 6:30 P. M. (P.S.T.)
NBC STATIONS
KFI—KGO—KPO—KHQ—KGW—KOMO—KSL



PAUL MYERS

KFVD

Phone EMpire 1171
Culver City 4517

John M. Swallow
Manager-Director

Al Welner
Announcer

Paul Myers
Early Announcer
M. S. Adams
Chief Technician

DAILY EXCEPT SUNDAY

- 7:00 a. m.—Hal Roach "Happy-Go-Lucky Trio."
12:00 noon—Tom Breneman, Recommendation Man.
12:30 p. m.—Tom and Wash.
1:00 p. m.—G. Allison's Radio Home program.
2:30 p. m.—Hal Roach Comedy Gossip.
3:00 p. m.—Auburn Concert Orchestra.
4:00 p. m.—Eldorado program.
5:00 p. m.—Timely Topics.
11:00 p. m.—Sebastian's Cotton Club Orchestra.

SUNDAY, OCTOBER 20

- 8:00 a. m.—Popular program.
9:00 a. m.—Organ Request program.
10:00 a. m.—Barrows Hour.
11:00 a. m.—Classical program.
12:00 noon—Hal Roach Comedy Gossip.
1:00 p. m.—"Inspiration," Magazine of the Air.
2:00 p. m.—Sacred Half Hour.
2:30 p. m.—Operatic Period, "Carmen."



C. MERWIN DOBYNS

KGER

Long Beach, Cal.—1370 Kc.

100 WATTS—218.8 MCTERS
435 Pine Avenue Phone 632-75
Owned and Directed by C. Merwin Dobyns

Herbert R. Conner
Business Manager
Jay Tapp
Chief Engineer
Nelson Case
Eddie Marble
Announcers and Staff
Artists
Frank Bliss
Publicity Director
Ruth Sulzer
Studio Manager
Harold Bender
Thomas Morris
Technician

DAILY EXCEPT SUNDAY

- 8:00 a. m.—Popular music.
9:00 a. m.—Julia Hayes, Helpful Hints to Housewives.
9:30 a. m.—Devotional Period, Rev. Calhoun.
9:45 a. m.—Popular music.
10:00 a. m.—Dr. Brandt's Health Service Talk.
10:10 a. m.—Hawaiian music.
10:15 a. m.—Popular music.
10:30 a. m.—Enna Jettick Twins.
11:00 a. m.—Rhythm Makers, P. C. C. (ex. Mon.).

SUNDAY, OCTOBER 20

- 9:00 a. m.—Wurlitzer Organ, Dixon.
9:30 a. m.—Taubman Men's Bible Class.
11:00 a. m.—First United Presbyterian Church.
2:00 p. m.—Edna Bond, blues singer.
2:30 p. m.—Long Beach Municipal Band Concert.
4:00 p. m.—Vocal Classics.
5:00 p. m.—Frank Waller Allen.
5:20 p. m.—Vesper Hour.
6:00 p. m.—News and music.
7:00 p. m.—Janice Simmons, violinist.
7:30 p. m.—"Smiling" Eddie Marble.
9:00 p. m.—Sunday Night Frolic.
11:30 p. m.—Wurlitzer Organ, Nixon.

MONDAY, OCTOBER 21

- 1:00 p. m.—Exchange Club.
2:00 p. m.—Triolian Trio.
4:00 p. m.—Nature Study Period.
4:30 p. m.—Jack and his Bachelor Boys.
6:15 p. m.—Shell Concert Trio.
8:00 p. m.—Pacific Coast Club program.
9:30 p. m.—Nelson's Original Half Hour.
10:00 p. m.—Hungarian Gypsy Orchestra and Penny Selby, tenor.
11:30 a. m.—Wurlitzer Organ, Dixon.

- 4:00 p. m.—DeWitt Hagar's program.
9:00 p. m.—Community program.
11:00 p. m.—Records.

MONDAY, OCTOBER 21

- 9:00 a. m.—KFVD Travelogue.
2:00 p. m.—Bess Kilmer's Helpful Hints to Housewives
9:00 p. m.—Gilmore Slide Show.
9:30 p. m.—Happy-Go-Lucky Trio.

TUESDAY, OCTOBER 22

- 9:00 a. m.—Dan Maxwell, Scotch comedian.
11:00 a. m.—Marion Gay, the Radio Smile Girl.
12:45 p. m.—Dr. Dorosh, Diet Question Box.
9:00 p. m.—Auburn Concert Orchestra; Peggy Price, soloist.
10:00 p. m.—Happy-Go-Lucky Trio.

WEDNESDAY, OCTOBER 23

- 9:00 a. m.—KFVD Travelogue.
11:00 a. m.—Bess Kilmer's Helpful Hints to Housewives.
9:00 p. m.—Happy-Go-Lucky Trio.
10:00 p. m.—Auburn Concert Orchestra.

THURSDAY, OCTOBER 24

- 9:00 a. m.—Dan Maxwell, Scotch comedian.
12:45 p. m.—Dr. Dorosh, Diet Question Box.
9:00 p. m.—Auburn Concert Orchestra; Peggy Price, soloist.
10:00 p. m.—Happy-Go-Lucky Trio.

FRIDAY, OCTOBER 25

- 9:00 a. m.—KFVD Travelogue.
9:00 p. m.—Happy-Go-Lucky Trio.
10:00 p. m.—Auburn Concert Orchestra.

TUESDAY, OCTOBER 22

- 7:00 a. m.—Long Beach Breakfast Club.
1:00 p. m.—Studio program.
2:00 p. m.—Hawaiian music.
4:30 p. m.—Jack and his Bachelor Boys.
7:00 p. m.—Rhythm Makers, P. C. C.
9:00 p. m.—Triolian Trio.
10:00 p. m.—Harmony Three.
10:30 p. m.—Betty and Wanda Snyder.
11:00 p. m.—Wurlitzer Organ, Nixon.

WEDNESDAY, OCTOBER 23

- 1:00 p. m.—Advertising Club, Breakers.
4:00 p. m.—Rev. Rosina Hobday, Psychic Readings.
4:30 p. m.—Triolian Trio.
7:00 p. m.—Juvenile Problems.
9:30 p. m.—Melodies of Bygone Days.
10:00 p. m.—Hungarian Gypsy Orchestra; Margaret Tranter, soprano.
11:00 p. m.—Rhythm Makers, P. C. C.

THURSDAY, OCTOBER 24

- 1:00 p. m.—Optimist Club.
2:00 p. m.—Voice Clinic.
4:30 p. m.—Jack and his Bachelor Boys.
6:15 p. m.—Dick Love's Entertainers.
7:00 p. m.—Rhythm Makers, P. C. C.
9:00 p. m.—Triolian Trio.
9:30 p. m.—Nelson's Original Half Hour.
10:00 p. m.—Harmony Three; Joe Bjorndahl, baritone.
11:00 p. m.—Wurlitzer Organ, Nixon.

FRIDAY, OCTOBER 25

- 1:00 p. m.—Studio program.
4:00 p. m.—Jack and his Bachelor Boys.
4:30 p. m.—Triolian Trio.
5:00 p. m.—Wurlitzer Organ.
6:15 p. m.—Sunset Blue Killers.
7:00 p. m.—Diamond Hawaiian Trio.
9:30 p. m.—Nelson's Original Half Hour.
10:00 p. m.—Hungarian Gypsy Orchestra; Penny Selby, tenor.
11:00 p. m.—Cocoanut Grove Orchestra.

SATURDAY, OCTOBER 26

- 1:00 p. m.—Studio program.
4:00 p. m.—Jack and his Bachelor Boys.
4:30 p. m.—Edna Bond, blues singer.
6:15 p. m.—Dick Love's Entertainers.
7:00 p. m.—Triolian Trio.
9:00 p. m.—Irma Jasper, violin.
11:00 p. m.—Cocoanut Grove Orchestra.

Astonishing advancement in radio reproduction

MAGNAVOX X-CORE DYNAMIC SPEAKER

Magnavox X-core is a new, exclusive principle of dynamic speaker construction. It assures, for the first time in any speaker... freedom from hum, rattles and distortion at any volume.

Also, the X-core enables Magnavox to offer, for the first time in speaker history...

A LIFETIME GUARANTEE
of original standard of performance

You will marvel at this new dynamic speaker. Used as built-in equipment in several makes of fine radio sets... also sold as a separate unit under the Magnavox name. Hear it!

C. C. LAWTON
1125 Wall St., Los Angeles
WEstmore 5395



REALISM

KFOX Long Beach, Cal.—1250 Kc.

"Where Your Ship Comes In"

1000 WATTS—239.9 METERS—HANCOCK OIL STATION
Telephone No. 672-81



CLARENCE GRAY

Owned and Operated by
NICHOLS & WARRINER
Inc.
220 E. Anaheim St.
HAL G. NICHOLS
CLARENCE GRAY
FOSTER RUCKER
CECIL FRY
Announcers
L. W. McDowell
Chief Technician

DAILY EXCEPT SUNDAY

- 5:00-7:00 a. m.—Remote control, KGFI.
- 7:00 a. m.—Early Bird News.
- 8:00 a. m.—Records.
- 8:30 a. m.—Novelty program.
- 9:30 a. m.—Hawaiian program.
- 10:00 a. m.—KFOX Organ Recital, Roy Metcalfe.
- 11:00 a. m.—Beauty Talk.
- 11:10 a. m.—Studio Orchestra (except Monday).
- 11:30 a. m.—Press Telegram News; Frank P. Goss.
- 11:50 a. m.—Studio Orchestra.
- 12:00 noon—Hollywood Girls.
- 1:30 p. m.—Originality Girls (ex. Mon. and Thurs.).
- 2:00 p. m.—Health Talk by Dr. Harbottle.
- 2:15 p. m.—Records.
- 2:30 p. m.—L. B. Municipal Band (ex. Monday).
- 3:00 p. m.—Organ Recital from Merithews.
- 3:30 p. m.—Long Beach Band (ex. Monday).
- 4:00 p. m.—Press-Telegram News; Frank P. Goss.
- 5:00 p. m.—Organ Recital from Merithews.
- 5:30 p. m.—Hollywood Girls (except Monday).
- 6:00 p. m.—Lost and Found Department.
- 7:30 p. m.—Buster Wilson's Orchestra (ex. Monday).
- 9:00 p. m.—El Patio Ballroom (ex. Mon., Wed. and Sat.).
- 11:00 p. m.—Majestic Ballroom Orchestra.
- 11:30 p. m.—Silver Spray Dance Orchestra.
- 12:00 midnight—KGFI.

SUNDAY, OCTOBER 20

- 7:00 a. m.—Remote Control KGFI.
- 9:00 a. m.—Concert Orch. and Light Opera.
- 10:00 a. m.—Organ Recital from Merithews.
- 11:00 a. m.—St. Lukes Episcopal Church.
- 12:30 p. m.—Musical program.
- 1:00 p. m.—Hollywood Girls.
- 2:00 p. m.—Rebroadcast—KGFI.
- 2:30 p. m.—Long Beach Municipal Band.
- 4:00 p. m.—Organ Recital from Merithews.
- 5:00 p. m.—Sunset Harmony Boys.

- 5:30 p. m.—Doris, Grace and Fosters.
- 6:00 p. m.—"Em and Clem."
- 6:30 p. m.—Studio Orchestra.
- 7:00 p. m.—Hollywood Girls.
- 8:00 p. m.—First Church of Christ, Scientist.
- 9:00 p. m.—Hancock Oil Co., Distributor's Nite.
- 11:00 p. m.—Watch Hospital, KGFI.

MONDAY, OCTOBER 21

- 11:10 a. m.—Varsity Boys.
- 5:30 p. m.—Southern Hawaiian Trio.
- 6:05 p. m.—Studio Orchestra.
- 6:30 p. m.—Kaai Hawaiian Trio.
- 7:00 p. m.—Suydam's Buttercream School.
- 8:00 p. m.—Motor Tires Quartette.
- 9:00 p. m.—Frederick Fisher and John Watts Gilbert.
- 10:00 p. m.—El Patio Ballroom.

TUESDAY, OCTOBER 22

- 9:00 a. m.—Organ Recital.
- 9:50 a. m.—Novelty songs.
- 1:00 p. m.—Kiwanis Club luncheon.
- 6:30 p. m.—Helene Smith, pianist.
- 6:45 p. m.—Dr. Williams, Health Specialist.
- 7:00 p. m.—Three Bluebirds.
- 8:00 p. m.—Long Beach Band.
- 8:30 p. m.—Cecil Fry, popular songs.

WEDNESDAY, OCTOBER 23

- 6:05 p. m.—Sunset Harmony Boys.
- 6:30 p. m.—Studio program.
- 8:00 p. m.—Hancock Golden Trails Hour, KFOX organ
- 10:30 p. m.—Flights from Wilmington Bowl.

THURSDAY, OCTOBER 24

- 9:20 a. m.—Organ Recital.
- 1:00 p. m.—"Health and Efficiency," Dr. E. S. Clark.
- 1:15 p. m.—Originality Girls.
- 4:20 p. m.—Haymaker's Old Time Dance Music.
- 6:30 p. m.—Doris, Grace and Foster, popular songs.
- 7:00 p. m.—Studio Orchestra.
- 8:00 p. m.—Texas Cowboys, Old Time Music.
- 8:30 p. m.—L. B. Municipal Band.

FRIDAY, OCTOBER 25

- 9:00 a. m.—Organ Recital.
- 1:00 p. m.—Masonic Luncheon.
- 4:20 p. m.—Crystal Roof Melody Makers.
- 6:30 p. m.—Kaai Hawaiian Trio.
- 7:00 p. m.—Four Bluebirds, novelty vocal and instrumental trio.

SATURDAY, OCTOBER 26

- 9:20 a. m.—Organ Recital.
- 6:30 p. m.—Sunset Harmony Boys.
- 7:00 p. m.—Doris, Grace and Foster, popular songs.
- 8:00 p. m.—Football talks, R. W. Shirey.
- 8:15 p. m.—Long Beach Municipal Band.
- 10:00 p. m.—Doris and Clarence, Fain's Ragmuffins.



AL CAJAL

KFQZ Los Angeles, Calif.—860 Kc.

250 WATTS—348.5 METERS

1417 S. Figueroa St., Los Angeles, Calif. Westmore 3001.

Walter King
General Manager
Monroe Manning
Advertising Manager
Ray Ogler
Technician and Announcer
L. E. Taft
Studio Manager
Al Cajal
Studio Accompanist
Jack Carrington
Program Manager and
Announcer

DAILY EXCEPT SUNDAY

- 7:00 a. m.—J. V. Baldwin Motor Co.
- 8:00 a. m.—Popular Recordings.
- 9:00 a. m.—Selections.
- 10:00 a. m.—Records.
- 11:00 a. m.—Popular recordings.
- 12:00 noon—Al Cajal and soloists.
- 1:00 p. m.—Records.
- 2:00 p. m.—Popular recordings.
- 3:00 p. m.—Selections.
- 5:00 p. m.—Merchants' Evening Review.

SUNDAY, OCTOBER 20

- 8:00 a. m.—Breakfast program.
- 9:00 a. m.—Cambria Pines.
- 10:00 a. m.—West Plooc Furniture.
- 3:00 p. m.—Popular recordings.

- 1:00 p. m.—L. B. Hair Tonic.
- 3:00 p. m.—Records.
- 4:00 p. m.—Murray's Restaurant.
- 5:00 p. m.—Morgan & Fields.

MONDAY, OCTOBER 21

- 9:00 p. m.—Esther Laurette and Laura Wheeler.
- 10:00 p. m.—Fritz Martin, Moni White and Al Cajal.
- 11:00 p. m.—Stan and Felix, and Al Cajal.

TUESDAY, OCTOBER 22

- 9:00 p. m.—Esther Laurette and Laura Wheeler.
- 10:00 p. m.—Billie Mercer and Bob Swinney, and Al Cajal.
- 11:00 p. m.—Anna Martin, Marjorie Forster, Al Cajal.

WEDNESDAY, OCTOBER 23

- 9:00 p. m.—Esther Laurette and Laura Wheeler.
- 10:00 p. m.—Stan and Felix, and Al Cajal.
- 11:00 p. m.—Fritz Martin, Moni White and Al Cajal.

THURSDAY, OCTOBER 24

- 9:00 p. m.—Esther Laurette and Laura Wheeler.
- 10:00 p. m.—Billie Mercer, Bob Swinney, and Al Cajal.
- 11:00 p. m.—Anna Martin, Marjorie Forster, Al Cajal.

FRIDAY, OCTOBER 25

- 9:00 p. m.—Esther Laurette and Laura Wheeler.
- 10:00 p. m.—Stan and Felix, and Al Cajal.
- 11:00 p. m.—Fritz Martin, Moni White and Al Cajal.

SATURDAY, OCTOBER 26

- 9:00 p. m.—Billie Mercer, Bob Swinney, and Stan and Felix.
- 10:00 p. m.—Esther Laurette and Laura Wheeler.
- 11:00 p. m.—Fritz Martin and Esther Laurette.

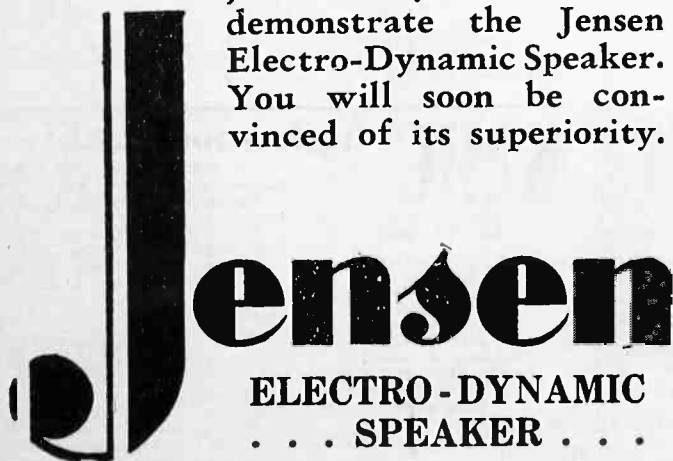
No. 84 of a Series

Your Old Radio is probably all right except for the speaker

Did you ever consider how little it would cost to install a Jensen Electro-Dynamic in your radio?

Built by Peter L. Jensen, one of radio's outstanding engineers, the Jensen Speaker Unit will give you a tonal range and radio reception that will astound you with its brilliance and tone fidelity.

The installation in the average radio is a simple job. Ask your dealer to demonstrate the Jensen Electro-Dynamic Speaker. You will soon be convinced of its superiority.



Jensen
ELECTRO-DYNAMIC
. . . SPEAKER . . .

REPRODUCTION . . . TRUE AS THE ORIGINAL

Factories:

212 Ninth Street
OAKLAND, CALIF.

6601 S. Laramie Ave.
CHICAGO, ILLINOIS



EDMUND LYTTON

KEJK Beverly Hills, Cal.—1170 Kc.

500 WATTS—256.3 METERS
Operated by MacMillan Petroleum Co.
Crestview 3101, Wilshire Blvd., at Camden Drive

Wm. G. Ebersole
Manager
Irene Taylor Rapp
Production Manager
Edmund Lytton
John McIntyre
Margaret MacDonald
Announcers
Walter McCreery
Commercial Manager
K. G. Ormiston
Technical Supervisor

12:30 p. m.—Terpezone—Rebroadcast from KHJ.
3:00 p. m.—Choir from Church of Latter Day Saints.
9:00 p. m.—Mischa Gagna Concert Trio.

MONDAY, OCTOBER 21

10:00 p. m.—Popular program with KEJK Orchestra

TUESDAY, OCTOBER 22

9:30 a. m.—Adele Millar, Beauty Talk.
2:00 p. m.—Emerald Isle Request program.
3:00 p. m.—Artist Series—Classic program.
9:00 p. m.—Waikiki Beach Boys.
9:30 p. m.—Terry Koechig, songs, piano solos
10:00 p. m.—Tudor Williams, assisted by KEJK Or
10:30 p. m.—KEJK Orchestra, dance program.

WEDNESDAY, OCTOBER 23

9:30 a. m.—Madame Irwin Kellogg, "Why Breathe?"
9:30 p. m.—Popular Hour—Orchestra
10:30 p. m.—Ben Light and Brother Paul.

THURSDAY, OCTOBER 24

3:00 p. m.—Artist Series—Classic program.
9:00 p. m.—Silverwood's program, orchestra
10:00 p. m.—Betty Middleton and Cast in Playlet.
10:30 p. m.—Ben Light's Three Minstrels.

FRIDAY, OCTOBER 25

2:00 p. m.—Emerald Isle Request program.
3:00 p. m.—Musical program.
9:00 p. m.—Harmony Entertainers.
9:30 p. m.—Musical Comedy, orchestra and soloists.
10:00 p. m.—Orchestra in dance program.
10:30 p. m.—Ben Light and Brother Paul.

SATURDAY, OCTOBER 26

2:00 p. m.—Football Game from L. A. Coliseum.
9:00 p. m.—Revue Prologue.
9:30 p. m.—MacMillan Saturday Night Fun Revue.

DAILY EXCEPT SUNDAY

7:00 a. m.—Frank Roefer's Setting Up Exercises.
8:00 a. m.—Pot o' Gold.
9:00 a. m.—New Recordings. Health Talk at 9:15.
10:00 a. m.—Chapel Hour, U. of S. C. (ex. Friday and Saturday).
10:20 a. m.—Jack Klefer, the Ad-Visor.
12:00 noon—Margaret Macdonald, "Modes and Fashions Hour."
1:00 p. m.—Sleepytime Suggestions.
1:15 p. m.—Items of Interest.
1:30 p. m.—Royal Purifier program.
2:00 p. m.—Musical program.
5:00 p. m.—Bob Roe's Southern Serenaders.
11:00 p. m.—Record Request program.

SUNDAY, OCTOBER 20

8:00 a. m.—Kelly Kar program.
10:00 a. m.—Franklin Motor Car program.
11:00 a. m.—Musical program.
12:00 noon—"Blow the Smoke Away."

Radio Correspondence Education Division KEJK

University of Southern California

MONDAY, OCTOBER 21

3:00 p. m.—English of Today, McCorkle.
3:30 p. m.—A Square Deal for the Pay Envelope, W. A. Polk, Past President of the American Institute of Banking, Los Angeles Chapter and Junior Vice-President of the Bank of America.
4:00 p. m.—Psychology (Physiology), Waugh. The Semi-Centennial Lecture Series on Contemporary Civilization.
4:30 p. m.—Public Business, Gordon Whitnall.
9:00 p. m.—Short Story Writing, Dietrick. Correspondence Course.
9:30 p. m.—Some Problems of Peace (International Relations), O. W. E. Cook. The Semi-Centennial Lecture Series on Contemporary Civilization.

WEDNESDAY, OCTOBER 23

3:00 p. m.—Phases of Public Speaking, Harry H. Anderson, School of Speech Faculty.
3:30 p. m.—The Child's Formal Training—The Story Hour in the Home, Harriet Fuller.
4:00 p. m.—Studies in Modern American Literature, Dietrick. Correspondence Course.
4:30 p. m.—The Greek Classics in English Literature (Classic), Douglas. The Semi-Centennial Lecture Series on Contemporary Civilization.
9:00 p. m.—Plant Nutrition—How Plants Get Their Food (Botanical Science), Johnstone. The Semi-Centennial Lecture Series on Contemporary Civilization.



RAE SILVERMAN

KMIC Inglewood, Calif.—1120 Kc.

500 WATTS—267.7 METERS
Chamber of Commerce Bldg., Inglewood, Calif.
Owned and Operated by Daiton's, Inc.
10:30 p. m.—Hollywood Roof.

Tel. TH. 1121

V. G. Freitag
Manager
Frank Bull
Chief Announcer
Rae Silverman
Program Director
Kenneth M. Isbell
Chief Engineer
Tom Scholtz
Technician

TUESDAY, OCTOBER 22

5:30 p. m.—Dick Giblan and Esther Kahn.
6:30 p. m.—Marie Hockings at the organ.
7:00 p. m.—Studio orchestra (old-time numbers).
7:30 p. m.—Country Jane.
8:30 p. m.—Dance Band (request program).
9:30 p. m.—Moscow Inn.

WEDNESDAY, OCTOBER 23

5:30 p. m.—Geo. Farwell and Trio.
7:00 p. m.—Marie Hockings at the organ.
7:30 p. m.—Country Jane and KMIC Trio.
8:30 p. m.—Larry Walden and his Hollywood Roof Orch.
9:30 p. m.—Moscow Inn.

THURSDAY, OCTOBER 24

5:30 p. m.—Jack Stearns and Grace Hamilton.
6:30 p. m.—Dance Band.
7:00 p. m.—Old-time numbers by the orchestra.
10:30 p. m.—Moscow Inn.

FRIDAY, OCTOBER 25

5:30 p. m.—Geo. Farwell and Trio.
6:30 p. m.—Organ recital.
7:30 p. m.—Country Jane and KMIC Trio.
8:30 p. m.—Hollywood Roof.
9:30 p. m.—Moscow Inn.

SATURDAY, OCTOBER 26

5:30 p. m.—Dick Giblan and Esther Kahn.
5:30 p. m.—Harmony Hawaiians.
6:30 p. m.—Dance Band.
10:30 p. m.—Moscow Inn.

DAILY EXCEPT SUNDAY

8:00 a. m.—Rae and her Pals and "The Commandairs."
10:00 a. m.—Share time with KFSG.
12:00 noon.—Records.
2:00 p. m.—Variety program (except Wednesday).
4:30 p. m.—Request records (except Monday).
2:00 p. m.—Variety program (ex. Wed., Thurs., Fri.).

SUNDAY, OCTOBER 20

1:00 p. m.—Records.
4:30 p. m.—Popular program.

MONDAY, OCTOBER 21

5:30 p. m.—Jack Stearns and Grace Hamilton.
6:30 p. m.—Dance Band.
7:00 p. m.—Old-time numbers by the orchestra.
7:30 p. m.—Country Jane.
8:30 p. m.—City of Inglewood program.
9:30 p. m.—Moscow Inn.

POWELL Screen-Grid Radio

*Today's Greatest Radio
Value*

- 2 SCREEN GRID TUBES
- POWER DETECTION
- 145 POWER TUBE
- DYNAMIC SPEAKER

All housed in this genuine Hand Rubbed Walnut Console Cabinet and sold under this seal:



\$ 79.50

Less Tubes

Powell Manufacturing Co.

LOS ANGELES
6121 S. Western Ave.
YOrk 9552

SEATTLE
909 Pike St.

SAN FRANCISCO
1270 Mission Street
Underhill 3314

The essential features of these programs are identical with those sent us by the stations



LESLIE ADAMS

KFSD

Leslie Adams
General Manager
Walter B. Neill
Advertising Manager
G. A. Litten
Chief Technician
Billy Murray
Announcer
Leah McMahon
Program Director

DAILY EXCEPT SUNDAY

- 8:45 a. m.—Good Cheer program.
9:00 a. m.—Morning musical.
10:00 a. m.—Amy Lou.
2:30 p. m.—Balboa Park organ (ex. Mon. and Tues.).
5:00 p. m.—Nightly Musical Review.
6:00 p. m.—News Items.
10:00 p. m.—Nashold's Downtown Ballroom (ex. Monday and Wednesday).
11:00 p. m.—Doc Ross and his Hotel Del Coronado Orchestra (except Monday and Wednesday).

SUNDAY, OCTOBER 20

- 10:00 a. m.—Novelty Hour.
11:00 a. m.—Nash Chitwood Popular Hour.
12:00 noon.—Old Time program.
2:30 p. m.—Organ Concert from Balboa Park, Dr. Humphrey J. Stewart at the Console.
8:00 p. m.—Seaboard Building and Loan program.
8:30 p. m.—Hotel Del Coronado, Doc Ross.

MONDAY, OCTOBER 21

- 11:00 a. m.—Lloyd Peck's Service Hour.
6:15 p. m.—KFSD Concert Trio.
7:00 p. m.—Thearle Music Co.
8:00 p. m.—Studio program.
8:30 p. m.—Lena Frazee, soprano.
9:00 p. m.—Nashold's Downtown Ballroom.

TUESDAY, OCTOBER 22

- 8:30 a. m.—Spanish Lesson.
11:00 a. m.—Lloyd Peck's Service Hour.

San Diego, Calif.—600 Kc.

1000 WATTS—499.7 METERS
"The Air Capitol of the West"
Telephone Franklin 6353

- 6:15 p. m.—State College program, Ramona Rosel.
7:00 p. m.—KFSD Concert Trio.
8:00 p. m.—Manuel Dehesa.
8:30 p. m.—Leslie Adams.
9:00 p. m.—State College program.

WEDNESDAY, OCTOBER 23

- 11:00 a. m.—Lloyd Peck's Service Hour.
6:15 p. m.—Playcasters.
7:00 p. m.—Union-Tribune, Police Dept. Safety program, featuring Concert Trio with George Ballantine, tenor.
8:00 p. m.—Studio program.
9:00 p. m.—Nashold's Downtown Ballroom.
10:00 p. m.—Hotel Del Coronado, Doc Ross.

THURSDAY, OCTOBER 24

- 8:30 a. m.—Spanish Lesson.
11:15 a. m.—Health Talk by Prof. W. T. Harbottle.
11:30 a. m.—Lloyd Peck's Service Hour.
6:15 p. m.—Manuel Dehesa.
7:00 p. m.—Cramer's Concert Trio, with John Wells.
8:00 p. m.—Manuel Desa.
8:30 p. m.—Studio program.
9:00 p. m.—Royal Hawaiians and Helen Kirkham.

FRIDAY, OCTOBER 25

- 11:15 a. m.—Health Talk by Prof. W. T. Harbottle.
11:30 a. m.—Lloyd Peck's Service Hour.
4:45 p. m.—Book Review by Miss Plaister.
6:15 p. m.—KFSD Concert Trio with Mildred Marini.
7:00 p. m.—Program by remote control from Thearle Music Co.

- 8:00 p. m.—Dan Parker's Old Time Program.
8:30 p. m.—Parmalee Dorchmann.
9:00 p. m.—Program arranged by Geo. Ballantine.
9:30 p. m.—Dorothy Durham and Leonard Spalding.

SATURDAY, OCTOBER 26

- 8:30 a. m.—Spanish lesson.
11:15 a. m.—Health Talk by Prof. W. T. Harbottle.
11:30 a. m.—Lloyd Peck's Service Hour.
6:15 p. m.—Studio program.
7:00 p. m.—KFSD Concert Trio.
8:00 p. m.—Studio program.
8:30 p. m.—Blanche Wood.
9:00 p. m.—Esther Rogers, Maria Rude.
9:30 p. m.—Speed Freeman.



EARL F. KIERNAN

KGB

R. G. Binyon
Manager
Otto Hoeg
Program and Studio Dir.
Luther L. Putnam
Chief Announcer
R. D. Ridsdale
Sales Department
Earl F. Kiernan
Technician

DAILY EXCEPT SUNDAY

- 7:00-9:50 a. m.—Records.
9:50 a. m.—Loeffler's College Bootery.
10:00 a. m.—Classical recordings.
2:30 p. m.—Records.
2:45 p. m.—News courtesy of San Diego Sun.
3:00 p. m.—Records.
4:00 p. m.—Merchants' Air Service.
7:00 p. m.—Sports News.
10:30 p. m.—Green Hat Nite Club (ex. Saturday).
11:00 p. m.—Kennedy's Cafe and Nite Club (ex. Sat.).

SUNDAY, OCTOBER 20

- 8:00 a. m.—Popular and Classical recordings.
11:30 a. m.—Loeffler's College Bootery.
11:45 a. m.—Records.
6:00 p. m.—Church of Jesus Christ, L.D.S.
7:00 p. m.—Pickwick Concert Ensemble and Vocalist.
8:00 p. m.—"Rips" Novelty Three.
9:00 p. m.—Mexican Serenaders.
10:00 p. m.—Harry Woods (Master of a Million Melodies).
10:30 p. m.—Green Hat Nite Club.
11:00 p. m.—Kennedy's Cafe and Nite Club.

San Diego, Calif.—1360 Kc.

220.6 METERS—250 WATTS
Pickwick Terminal Hotel—Franklin 6151-2-3
PICKWICK BROADCASTING CORPORATION
Henry Hohman, Managing Director

MONDAY, OCTOBER 21

- 10:30 a. m.—Dearborn Radio.
7:05 p. m.—Johnnie Athalde, the Minor Twins and Otto Hoeg.
8:00 p. m.—Aloha Boys' Hawaiian Trio.
9:00 p. m.—Aeolian Quartette and Harry Woods.
10:00 p. m.—Gene Perry.

TUESDAY, OCTOBER 22

- 7:05 p. m.—Bill Rossi, Eleanor Lynch and Otto Hoeg.
8:00 p. m.—Pickwick Concert Quartette.
9:00 p. m.—Verlie Barclay.
9:30 p. m.—Aloha Boys' Hawaiian Trio.

WEDNESDAY, OCTOBER 23

- 7:05 p. m.—Harry Woods and Lewise Ward.
8:00 p. m.—Lilas Johnson, Jean Clifton and vocalist.
9:00 p. m.—Community Chest program.
9:30 p. m.—"Rip" Caldwell and Verlie Barclay.

THURSDAY, OCTOBER 24

- 7:05 p. m.—Fred Wesley, Otto Hoeg and Marcelline Emory.
8:00 p. m.—Mexican Srenaders (requests).
9:00 p. m.—Miriam Eberhardt and Otto Hoeg.
9:30 p. m.—Aloha Boys' Hawaiian Trio.

FRIDAY, OCTOBER 25

- 7:05 p. m.—Bill Rossi, Dorothy Pratt and Otto Hoeg.
8:00 p. m.—Pickwick Concert Trio and vocalist.
9:00 p. m.—Aeolian Male Quartette and Harry Woods.
10:00 p. m.—Verlie Barclay.

SATURDAY, OCTOBER 26

- 3:00 p. m.—KGB Movie Clumb.
7:05 p. m.—Minor Twins, Otto Hoeg and Fred Wesley.
8:00 p. m.—Aloha Boys' Hawaiian Trio.
9:00 p. m.—Green Hat Nite Club, Lewise Ward and Ko-Eds.
10:00 p. m.—KGB Frolic.
12:00 midnight—Kennedy's Nite Club "Hi-Hatters."

9 Proven Points of Superiority

- Selectivity
- Tone Quality
- Sensitivity
- Precision of Construction
- Quiet Operation
- Distance Getting
- Volume
- Beauty
- Value



\$175⁵⁰
Complete Installed

LYRIC RADIO

See . . . Hear . . . Operate this set before you buy.
 Drop us a card for the name of your nearest dealer.

Distributed in California by

Listenwalter & Gough, Inc.

819 East First Street, Los Angeles

TRinity 9711

The essential features of these programs are identical with those sent us by the stations



CURTIS PECK

KPO

San Francisco, Calif.—680 Kc.

5000 WATTS—440.9 METERS
HALE BROTHERS AND THE CHRONICLE
"The Voice of San Francisco"

Phone Kearney 0704

J. W. Laughlin
Managing Director

Jean Campbell Crewe
Program Director

Curtis Peck
Technical Director

- 8:00 p. m.—R-K-O Hour, NBC.*
- 9:00 p. m.—The Parker Family, NBC.*
- 9:30 p. m.—Los Angeles Steamship Company, KPO and KFI.
- 10:00 p. m.—Tommy Monroe and Bob Allen.
- 10:30 p. m.—Spotlight Revue, NBC.*

WEDNESDAY, OCTOBER 23

- 10:00 a. m.—Helpful Hints for Housewives.
- 1:00 p. m.—Jerry Jermaine.
- 3:00 p. m.—The Cabin Door, NBC.*
- 4:00 p. m.—Studio Hour, Market Quotations.
- 5:00 p. m.—Children's Hour.
- 5:50 p. m.—News Digest, "Scotty" Mortland.
- 6:00 p. m.—Federal Business Association talk.
- 6:15 p. m.—Book Review, Harold Small.
- 6:30 to 8:30 p. m.—NBC.*
- 8:30 p. m.—Earl C. Anthony "Packard Program," KPO and KFI.
- 9:00 p. m.—North American Building-Loan Assn.
- 9:30 p. m.—Dramatic Interpretations of Famous Operas.
- 10:00 p. m.—Jesse Stafford's Palace Hotel Dance Orchestra.

THURSDAY, OCTOBER 24

- 10:00 a. m.—Woman's Magazine of the Air.
- 11:00 a. m.—Standard School Broadcast, NBC.*
- 12:30 p. m.—Shrine Luncheon Broadcast.
- 1:30 p. m.—Jerry Jermaine.
- 2:00 p. m.—Aeolian Trio, Ye Towne Cryer, E. A. Pierce & Co., Stock Market Quotations.
- 3:00 p. m.—House of Myths, NBC.*
- 4:00 p. m.—Children's Hour.
- 5:00 p. m.—Fleischman Hour, NBC.*
- 6:00 p. m.—KPO Salon Orchestra.
- 7:00 p. m.—Halsey Stuart, NBC.*
- 7:30 p. m.—Aeolian Trio.
- 8:00 p. m.—Caswell Musical Episode.
- 8:30 p. m.—United Producers Corporation, NBC.*
- 9:00 p. m.—Behlow, Inc., program.
- 9:30 p. m.—Nathan Abas Violin Recital.
- 10:00 p. m.—Tommy Moore and Bob Allen.
- 10:30 p. m.—NBC Radio Room.

FRIDAY, OCTOBER 25

- 10:00 p. m.—News Digest, "Scotty" Mortland.
- 10:15 p. m.—Narrative Organ Recital.
- 11:30 a. m.—Art Talk by Helen Gordon Barker.
- 11:45 a. m.—Scripture Reading, etc.
- 1:00 p. m.—Jerry Jermaine.
- 2:30 p. m.—School Broadcast, Paul Pitman.
- 3:00 p. m.—Mormon Tabernacle Choir, NBC.*
- 3:30 p. m.—U. S. Dept. of Commerce talk.
- 3:45 p. m.—California State Chamber of Commerce talk.
- 4:00 p. m.—The Eventful Hour, "Don Thompson."
- 5:00 p. m.—Children's Hour.
- 5:50 p. m.—News Digest with "Scotty" Mortland.
- 6:00 to 10:00 p. m.—NBC.*
- 10:00 to 12:00 p. m.—State Audition, Atwater Kent Foundation's National Radio Audition.
- 11:30 a. m.—Duco, NBC.*
- 1:00 p. m.—Jerry Jermaine.
- 2:00 p. m.—The Wanderers, NBC.*
- 3:00 p. m.—Studio Hour.
- 4:00 p. m.—Theodore Strong, organ recital.
- 4:40 p. m.—Children's Hour.
- 5:20 p. m.—News Digest, "Scotty" Mortland.
- 5:30 p. m.—Around the World with Libby, NBC.*
- 6:00 p. m.—Eveready Hour, NBC.*
- 7:00 p. m.—Anglo-California Trust Company Radio Hour.

DAILY EXCEPT SUNDAY

- 7:00 a. m.—S. & W. Health Exercises, Hugh Dobbs.
- 8:00 a. m.—Shell Happy Times (except Wednesday).
- 9:30 a. m.—Dobbsie's Daily Chat (except Tuesday).
- 10:00 a. m.—Helpful Hints to Housewives (ex. Thurs.).
- 10:30 a. m.—Women's Magazine of the Air (ex. Saturday), NBC.
- 11:45 a. m.—Time Signals.
- 12:05 p. m.—Noon Concert (except Thursday).
- 1:30 p. m.—Ann Warner's Homemaking Chats (except Thursday and Friday).
- 2:00 p. m.—Aeolian Trio (except Tues., Saturday).
- 11:00 p. m.—Musical Musketeers, NBC (ex. Mon.).

SUNDAY, OCTOBER 20

- 9:00 a. m.—Sabbath Hour with Theodore Strong.
- 9:45 a. m.—Church Services.
- 10:45 a. m.—Bank of America of California.
- 12:00 noon—KPO Salon Orchestra.
- 1:00 p. m.—Afternoon Musical.
- 2:00 p. m.—Talk, Elmer Robinson.
- 2:15 p. m.—Football Broadcast—St. Mary's vs. Gonzaga. Don Thompson.
- 5:00 p. m.—Bank of America of California and Baseball Scores.
- 5:15 to 8:00 p. m.—NBC.*
- 8:00 p. m.—North American Building-Loan Assn.
- 8:30 p. m.—Rudy Seiger and his Fairmont Hotel Concert Orchestra.
- 9:00 p. m.—Abas String Quartette, with Mynard Jones, basso.
- 10:00 p. m.—News Digest, "Scotty" Mortland.
- 10:15 p. m.—Narrative Organ Recital.

MONDAY, OCTOBER 21

- 11:30 a. m.—Art Talk by Helen Gordon Barker.
- 11:45 a. m.—Scripture Reading, etc.
- 1:00 p. m.—Jerry Jermaine.
- 2:30 p. m.—School Broadcast, Paul Pitman.
- 3:00 p. m.—Mormon Tabernacle Choir, NBC.*
- 3:30 p. m.—U. S. Dept. of Commerce talk.
- 3:45 p. m.—California State Chamber of Commerce talk.
- 4:00 p. m.—The Eventful Hour, "Don Thompson."
- 5:00 p. m.—Children's Hour.
- 5:50 p. m.—News Digest with "Scotty" Mortland.
- 6:00 to 10:00 p. m.—NBC.*
- 10:00 to 12:00 p. m.—State Audition, Atwater Kent Foundation's National Radio Audition.

TUESDAY, OCTOBER 22

- 11:30 a. m.—Duco, NBC.*
- 1:00 p. m.—Jerry Jermaine.
- 2:00 p. m.—The Wanderers, NBC.*
- 3:00 p. m.—Studio Hour.
- 4:00 p. m.—Theodore Strong, organ recital.
- 4:40 p. m.—Children's Hour.
- 5:20 p. m.—News Digest, "Scotty" Mortland.
- 5:30 p. m.—Around the World with Libby, NBC.*
- 6:00 p. m.—Eveready Hour, NBC.*
- 7:00 p. m.—Anglo-California Trust Company Radio Hour.

SATURDAY, OCTOBER 26

- 1:00 p. m.—Jerry Jermaine.
- 2:15 p. m.—Football Broadcast—Stanford vs. U. S. C. at Stanford Stadium. Don Thompson at the microphone. KPO and KFI.
- 4:30 p. m.—E. A. Pierce & Co.'s Stock Market Quotations.
- 4:40 p. m.—Theodore Strong, organist.
- 5:00 p. m.—The Lyric Challengers, NBC.*
- 5:30 p. m.—Children's Hour.
- 6:00 to 8:00 p. m.—NBC.*
- 8:30 p. m.—Earl C. Anthony Packard program, KPO and KFI.
- 9:00 p. m.—Lauderland Lyrics, NBC.*
- 9:30 p. m.—Tommy Monroe and Bob Allen.
- 10:00 p. m.—Jesse Stafford's Palace Hotel Orchestra.

\$350

Complete
Actual size 4 1/2"
high x 2 1/2"
diameter



Turns off Your Radio Automatically

At any desired time to 1 1/2 hours. Saves batteries, light bills, tabs. Quickly pays for itself. Operates on battery or A.C. sets, any make. Play your radio at night—Radio Owl turns it off after you're asleep. Easy to operate, install. Small, attractive. Guaranteed. Outlasts set. Price \$3.50. At your dealers.

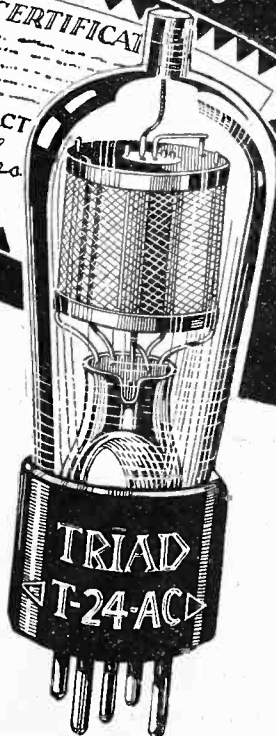
RADIO OWL

2269 E. 51st St.
LOS ANGELES

**This Guarantee
of performance
with every Triad
tube!**



*Ask for the
tube in the
black and yellow
"Triangular box"*



TRIAD INSURED RADIO TUBES are winning a world of friends—and why shouldn't they! The **TRIAD INSURANCE CERTIFICATE** is the fairest guarantee that has ever been offered in radio tube history—a minimum of six months' perfect service assured, or a satisfactory adjustment is made. There's protection for the purchaser! Protection you can not buy with any other tube. **TRIAD** quality alone makes possible such a guarantee. For sheer radio enjoyment—untroubled by tube worries, it will pay you to "try TRIADS." They improve any set!

West Coast Representatives
G. N. NOEL
 2704 S. Hill St. Los Angeles, Cal.
W. J. NOEL
 508 Eddy St. San Francisco, Cal.
R. C. JAMES
 Pioneer Bldg. Seattle, Wash.

TRIAD
 INSURED
RADIO TUBES

TRIAD MFG. CO., INC., PAWTUCKET, R. I.



LARRY SNELL

KPLA Los Angeles, Calif.—1000 Kc.

1000 KILOCYCLES—299.8 METERS—1000 WATTS
Commercial Exchange Building, Eighth and Olive Streets
Official Station of The Los Angeles Examiner

V. G. Freitag
Manager

Larry Snell
Announcer

Rae Silverman
Program Manager

Chas. Whitney
Chief Technician

10:00 p. m.—Popular Records.
11:00 p. m.—KPLA Frolic.

MONDAY, OCTOBER 21

10:00 p. m.—Jack Stern and Grace Hamilton.
11:00 p. m.—Popular program.
11:30 p. m.—Coffee Dan's.
12:00 midnight—United Artists Theatre.
1:00 a. m.—Coffee Dan's.

TUESDAY, OCTOBER 22

9:00 p. m.—Dance Orchestra.
10:00 p. m.—Studio Players.
10:30 p. m.—Fox Boulevard Frolic.
11:30 p. m.—Hammer Brigade from Coffee Dan's.
12:00 midnight—Paramount Theatre.

WEDNESDAY, OCTOBER 23

10:00 p. m.—Dick Giblin and Esther Kahm.
11:00 p. m.—Coffee Dan's.
12:00 midnight—United Artists Theatre.

THURSDAY, OCTOBER 24

6:30 p. m.—Tryouts.
9:00 p. m.—Studio Orchestra.
10:30 p. m.—Fox Boulevard Frolic.
11:30 p. m.—Hammer Brigade from Coffee Dan's.
12:00 midnight—Paramount Theatre.

FRIDAY, OCTOBER 25

10:00 p. m.—Jack Stern and Grace Hamilton.
11:00 p. m.—Popular program.
11:30 p. m.—Coffee Dan's.
12:00 midnight—United Artists Theatre.

SATURDAY, OCTOBER 26

9:00 p. m.—Dance Band.
10:00 p. m.—Dick Giblin and Esther Kahm.
11:30 p. m.—Coffee Dan's.
12:00 midnight—Paramount Theatre.

DAILY EXCEPT SUNDAY

6:00 a. m.—Early Birds.
7:00 a. m.—Records.
10:00 a. m.—Variety.
11:00 a. m.—Rae and Esther (Your Favorite Request program).
12:00 noon—Boulevard Theatre Organ.
1:00 p. m.—KPLA Studio Orchestra.
2:00 p. m.—Records.
3:00 p. m.—Banjo Boys.
4:00 p. m.—Records.
5:00 p. m.—Dance Band.

SUNDAY, OCTOBER 20

7:00 a. m.—Popular program.
9:00 a. m.—Records.
12:00 noon—Concert Records.
1:00 p. m.—Variety.
2:00 p. m.—Marilla Olney Players.
2:30 p. m.—Popular.
3:00 p. m.—Light Concert Records.
4:00 p. m.—Symphonic Records.

“Hear It Better on a Sterling Radio”

FORGET AERIAL TROUBLES

Get Clearer,
Sweeter,
More
Natural
Tone
With Less
Interference



Impossible
to Imagine
the Differ-
enc in Radio
Reception
With This
New
Discovery

(PAT. APPLIED FOR)

WELLSTON GOLD TEST AERIAL

A Filtered Aerial Containing Gold-Plated Wire

Does not plug into the light socket, and has a tendency to minimize static as it is a filtered aerial; no other aerial like it.

\$2.50 List Price.

MANUFACTURED BY

WELLSTON RADIO CORPORATION
ST. LOUIS, MO.

Jobbers communicate with Western Representatives

BUSHNELL & RAYNER

270 Chronicle Bldg.

San Francisco

SILVER MARSHALL.Inc

SM

**HEADQUARTERS
FOR THE
LATEST KITS
AND
PARTS**

**RADIO MANUFACTURERS
SUPPLY CO.**

1000 So. Broadway

CORNER 10TH ST.. "THE FAMOUS RADIO CORNER"

LOS ANGELES

The essential features of these programs are identical with those sent us by the stations



"MAC"

KFRC San Francisco, Calif.—610 Kc.

Owned and Operated by Don Lee, Cal. Dist. for Cadillac & LaSalle
1000 WATTS—491.5 METERS
1000 Van Ness Telephone Prospect 0100
"Keep Forever Radiating Cheer"

Frank Moss
Musical Director

Heien O'Neill
Program Director

Harrison Holloway
Manager

Alan N. Cormack
Engineer

7:30 p. m.—Remar Twins.
8:00 p. m.—Pacific States Savings program.
9:00 p. m.—"Pepcy Pam and the Englishman."
9:30 p. m.—Orchestra and Soloists.

WEDNESDAY, OCTOBER 23

DAILY EXCEPT SUNDAY
7:00 a. m.—Simpv Fitts from Seal Rocks.
7:30 a. m.—New York Stock Exchange, courtesy Walsh, O'Connor & Co. (ex. Saturday).
9:00 a. m.—Columbia Noonday Club (ex. Tues.).
12:00 noon—Sherman Clay Concert.
1:00 p. m.—Leigh Harline, organist (ex. Tues., Sat.).
1:30 p. m.—Charlie Wellman (ex. Saturday).
2:00 p. m.—Happy-Go-Lucky Hour.
4:55 p. m.—Town Topics (ex. Saturday).
5:00 p. m.—Story Man and his Air Castles (ex. Sat.).
5:30 p. m.—Hank Howe and his Music (ex. Sat.).
10:00 p. m.—Baron Waste and Lucius (ex. Wed.).
10:10 p. m.—Dance Music.
12:10 p. m.—Dorado Club Silver Fizz Dance Music.

SUNDAY, OCTOBER 20

9:00 a. m.—"Home, Sweet Home" Concert.
12:00 noon—Sherman & Clay Noonday Concert.
1:15 p. m.—Sunday Matinee.
2:00 p. m.—McKesson & Robbins program (CBS).
2:30 p. m.—Recordings.
3:00 p. m.—Art Fadden, pianist.
3:30 p. m.—Recordings.
4:30 p. m.—Inspirational Talk by Dr. Louis I. Newman.
5:00 p. m.—Tea Time Music.
5:30 p. m.—Art Kahn and his Sonatrons (CBS).
6:00 p. m.—Majestic "Theater of the Air," Wendall Hall and his Majestic.
7:00 p. m.—Melody Hour.
8:00 p. m.—Charles Bulottti, tenor.
9:00 p. m.—Val Valente and his Roof Garden Orch.
10:00 p. m.—Baron Waste and Lucius.
10:10 p. m.—Val Valente and his Roof Garden Orch.
11:10 p. m.—New Mandarin Cabaret Band.

MONDAY, OCTOBER 21

8:00 a. m.—Alarm Clock.
9:30 a. m.—Yoeng's Orchestra (CBS).
10:00 a. m.—Wyn's Daily Chats.
11:00 a. m.—Mary Lewis Haines, Domestic Science talk.
11:30 a. m.—Raladam program.
11:45 a. m.—Auditions.
3:00 p. m.—Western Air Express Aviation Talk.
3:15 p. m.—Talk by Physician from U. C.
3:30 p. m.—H. V. Kaltenborn, Current Events.
4:00 p. m.—Charlie Wellman.
6:00 p. m.—KHL Orchestra and Soloists.
6:15 p. m.—George P. Edwards of Coast Investor.
6:30 p. m.—To be announced.
7:00 p. m.—Eskimo Pie program.
7:30 p. m.—Paul Carson, pianist; Juliet Dunn, soprano.
8:00 p. m.—"Golden State Blue Monday Jamboree."

TUESDAY, OCTOBER 22

8:00 a. m.—Early Birds.
9:00 a. m.—Yoeng's Orchestra (CBS).
9:30 a. m.—Morning Melodists, direction Frank Moss.
10:30 a. m.—Wyn's Daily Chats.
11:30 a. m.—Fels Naptha Broadcast.
11:45 a. m.—Auditions.
1:00 p. m.—U. S. Army Band (CBS).
3:00 p. m.—"Show Folks" (CBS).
3:30 p. m.—Educational Period.
4:00 p. m.—F. W. Davis.
4:30 p. m.—Something About Everything.
4:35 p. m.—S. F. Call's News Bulletins.
6:00 p. m.—Paul Whiteman and His Old Gold Orch.
7:00 p. m.—U. S. Rubber program.

8:00 a. m.—Alarm Clock.
9:30 a. m.—Glidden Soatone program.
9:45 a. m.—Yoeng's Orchestra (CBS).
10:00 a. m.—Morning Melodist, direction Frank Moss.
10:30 a. m.—Wyn's Daily Chats.
11:00 a. m.—Mary Lewis Haines, Domestic Science Talk.
11:30 a. m.—Auditions.
3:00 p. m.—The "Observer."
3:35 p. m.—Something About Everything.
3:35 p. m.—San Francisco Call's News Bulletins and Lost and Found.
4:00 p. m.—Matinee Melody Masters.
5:00 p. m.—Voice of Columbia (CBS).
6:00 p. m.—Joe Mendle and his Pep Band, with Mac.
7:00 p. m.—Kolster Radio Hour—Orchestra and Soloists (CBS).

7:30 p. m.—Maytag So-a-Tone program.
8:00 p. m.—M-G-M Movie Club.
9:00 p. m.—Chanslor & Lyon program.
9:30 p. m.—Gilfillan program.
10:00 p. m.—Anson Weeks Hotel Orchestra.

THURSDAY, OCTOBER 24

8:00 a. m.—Early Birds.
9:00 a. m.—Columbia Noonday Club.
9:30 a. m.—Yoeng's Orchestra.
10:00 a. m.—Morning Melodists.
10:30 a. m.—Wyn's Daily Chats.
11:30 a. m.—Maytag Broadcast.
3:00 p. m.—Walter Brown Murray.
3:15 p. m.—Beauty Talks.
3:30 p. m.—Recordings.
6:00 p. m.—Informal Organ Recital.
6:30 p. m.—Walter Krausgrill El Patio Orchestra.
7:00 p. m.—Eskimo Pie program.
7:30 p. m.—National Forum from Washington.
8:00 p. m.—Richfield program.
9:00 p. m.—Veedol Vodvil.
9:30 p. m.—Bremer-Tully program.

FRIDAY, OCTOBER 25

8:00 a. m.—Alarm Clock.
9:30 a. m.—Yoeng's Orchestra (CBS).
10:00 a. m.—Wyn's Daily Chats.
11:00 a. m.—Mary Lewis Haines, Domestic Science Talk.
11:30 a. m.—Raladam Broadcast.
11:45 a. m.—Auditions.
3:00 p. m.—Musical Record program.
3:30 p. m.—Something About Everything.
3:35 p. m.—San Francisco Call's News Bulletins and Lost and Found.
4:00 p. m.—Matinee Melody Masters.
6:00 p. m.—Pat Frayne, Sports.
6:15 p. m.—Nunn Busch Shoe Company program.
7:00 p. m.—Stanley's 25 Club.
7:30 p. m.—Anna Kristina and Johnson Washer.
8:00 p. m.—Orchestra and Soloists.
8:30 p. m.—"Brunswick Brevities."
9:00 p. m.—True Story Hour.

SATURDAY, OCTOBER 26

8:30 a. m.—Saturday Synchronators.
10:00 a. m.—Alice Blue, pianist; Norman Nellson, tenor.
11:30 a. m.—Illinois-Michigan Football Game, Urbana.
2:00 p. m.—University of California vs. Olympic Club at Berkeley.
5:00 p. m.—Nit Wit Hour (CBS).
5:30 p. m.—Musical program.
6:00 p. m.—Clare Briggs, "Joe and Vi."
6:30 p. m.—Musical program.
7:00 p. m.—Paramount Public Hour.
8:00 p. m.—KHJ Night Court.
9:00 p. m.—Don Lee Symphony Orchestra.

"Hear It Better on a Sterling Radio"



UNTIL

someone else, who knows and uses your products, says them. Then, such testimonials constitute the strongest kind of endorsement.

That's why Polymet is proud of the things said about Polymet Products:-

- "Finely Built Products" —Silver
- "Quality Parts" —Stewart Warner
- "Definitely Superior Specialized Parts" —Zenith
- "With Polymet Parts, Perfect Service is Assured" —King
- "Specialized Parts That Complete the High Quality of Fada Sets" —Fada

CONDENSERS
RESISTANCES
COILS
TRANSFORMERS

Could our own adjectives ever mean one-half so much as the testimony of such companies as these!

Polymet Manufacturing Corporation
000 E. 134th St. New York City

POLYMET PRODUCTS

District Representative

THE SPECTOR COMPANY
Rialto Building, San Francisco

The essential features of these programs are identical with those sent us by the stations



BOB ROBERTS

KTAB

Bob Roberts
General Manager

Glenhall Taylor
Program Director

San Francisco—550 Kc.

500 WATTS—545.1 METERS

Official Pickwick Stages Station
Owned and Operated by the Pickwick Broadcasting Corp.
Pickwick Terminal Hotel, Fifth and Mission Sts.
Telephone Merrit 0246

7:30 p. m.—Program by Don.
8:00 p. m.—Organ Recital.
9:00 p. m.—Travelogue with the Melody Masters.
10:00 p. m.—Pickwickians Dance Orchestra.

TUESDAY, OCTOBER 22

9:00 a. m.—Morning Prayer Service.
9:30 a. m.—Dr. J. Douglas Thompson.
10:00 a. m.—Recordings.
1:30 p. m.—Fanchon's Style Chat.
7:00 p. m.—Recordings.
7:30 p. m.—Earle Caldwell and Estelle Moran, entertainers.

8:00 p. m.—Organ Recital.
9:00 p. m.—Lullaby Lane program.
10:00 p. m.—Pickwickians Dance Orchestra.

WEDNESDAY, OCTOBER 23

3:45 p. m.—Leah Kimball's Book Review.
7:00 p. m.—Recordings.
7:30 p. m.—Ronald Johnson.
8:00 p. m.—Organ Recital.
9:00 p. m.—Melody Masters.
10:00 p. m.—Pickwickians Dance Orchestra.

THURSDAY, OCTOBER 24

9:30 a. m.—Dr. J. Douglas Thompson.
10:00 a. m.—Recordings.
7:00 p. m.—Recordings.
7:30 p. m.—Walter J. Rudolph, piano recital.
8:00 p. m.—Pickwick Aviators.
8:30 p. m.—Organ Recital.
9:00 p. m.—"Cocoanuts" program.

FRIDAY, OCTOBER 25

1:30 p. m.—Fanchon's Style Chats.
7:00 p. m.—Recordings.
7:30 p. m.—Al Sather.
8:00 p. m.—Organ Recital.
8:30 p. m.—Mystery Play.
9:00 p. m.—Melody Masters.
10:00 p. m.—Pickwickians Dance Orchestra.

SATURDAY, OCTOBER 26

3:00 p. m.—Studio program.
7:00 p. m.—Recordings.
7:30 p. m.—Piano Recital by Walter J. Rudolph.
8:00 p. m.—Organ Recital.
9:00 p. m.—"What Have You" program.

DAILY EXCEPT SUNDAY
7:00 a. m.—Rastus and Sambo, the Eye Openers.
8:00 a. m.—Records.
9:00 a. m.—Tenth Ave. Baptist Church.
10:30 a. m.—Dr. Corley (except Tuesday).
11:00 a. m.—Barney Lewis, Tabloid of the Air.
12:00 noon—Sterling Cosmopolitans.
1:00 p. m.—Chapel of Chimes.
2:00 p. m.—Organ Recital (ex. Thurs. and Sat.).
3:00 p. m.—Matinee Melodists (except Saturday).
4:00 p. m.—Home Towners.
5:00 p. m.—Brother Bob's Frollic.
6:00 p. m.—Dr. Wetstone.
6:30 p. m.—Twilight Hour (except Monday).
11:00 p. m.—Night Owls.

SUNDAY, OCTOBER 20

10:00 a. m.—Bible Class.
11:00 a. m.—Tenth Avenue Baptist Church.
12:30 p. m.—Chapel of the Chimes.
1:00 p. m.—Church of the Latter Day Saints.
2:00 p. m.—Recordings.
2:15 p. m.—Football Game Broadcast from Kezar Stadium by Willard Kimball.
5:00 p. m.—Chapel of the Chimes.
6:00 p. m.—Edison Hour.
6:30 p. m.—Dr. Tindall.
7:00 p. m.—Studio program.
7:30 p. m.—Tenth Avenue Baptist Church.
9:30 p. m.—Dance Recordings.
10:00 p. m.—The Three Doctors of the Blues.
11:00 p. m.—The Night Owls.

MONDAY, OCTOBER 21

1:30 p. m.—Recordings.
7:00 p. m.—Recordings.



HARRY HERDMAN

KTBI Los Angeles, Calif.—1300 Kc.

1000 Watts—230.6 Meters—1300 Kc.—Bible Institute of L. A.

HARRY P. HERDMAN, Announcer. Phone ME. 6701

R. W. BURNS, Technician

GORDON E. HOOKER, Accompanist

DAILY EXCEPT SATURDAY AND SUNDAY

8:00 a. m.—Uncle Harry's Bible Story.
8:15 a. m.—Devotional Hour.
8:45 a. m.—Announcer's Hour.
9:15 a. m.—Radio Bible Course.
10:35 a. m.—Dr. John C. Page.
12:00 noon—Noonday Chimes and Scripture Reading.
2:00 p. m.—Visiting Pastor.

1:15 p. m.—Messages from the Best Books.

WEDNESDAY, OCTOBER 23

9:45 a. m.—Bible Question Box, Rev. W. H. Pike.
11:30 a. m.—Dr. J. E. Jaderquist.
1:00 p. m.—Ada and Ella Kimmell.
1:30 p. m.—Rev. John A. Hubbard.

THURSDAY, OCTOBER 24

9:45 a. m.—Missionary Hour.
11:30 a. m.—Dr. E. L. McCreery.
1:00 p. m.—Ernest Nichols, baritone.
1:15 p. m.—Missionary Biographies, Rev. Hunter.

FRIDAY, OCTOBER 25

9:45 a. m.—Messages from the Music Department.
11:30 a. m.—Dr. J. E. Jaderquist.
1:00 p. m.—Hazel Shively, contralto; Gordon Hooker.
1:30 p. m.—News of Christian Work, Dr. Boyd.
7:00 p. m.—International Sunday School Lesson.
8:00 p. m.—Evening School Lecture, Dr. White.
9:00 p. m.—Studio Musical Hour.

SUNDAY, OCTOBER 20
6:00 p. m.—Studio Vesper Service, Rev. Hunter.
8:00 p. m.—Church of the Open Door, Dr. Philpott.
9:15 p. m.—Bible Institute Gospel Service.

MONDAY, OCTOBER 21

9:45 a. m.—Superintendent's Hour.
11:30 a. m.—Verna Rempie, soprano.
1:00 p. m.—Musical program.
1:15 p. m.—Faculty Music Hour.
7:00 p. m.—Dr. W. P. White.
7:30 p. m.—Rev. Milo Jamison.
8:00 p. m.—Music.
9:00 p. m.—Dr. David L. Cooper.

TUESDAY, OCTOBER 22

9:45 a. m.—Rev. H. W. Kellogg.
11:30 a. m.—Dr. W. E. Edmonds.
1:00 p. m.—Jack Wells, baritone.

The essential features of these programs are identical with those sent us by the stations



HOWARD MILHOLLAND

KGO Oakland, California—790 Kc.

7500 WATTS—379.5 METERS
PACIFIC COAST STATION, GENERAL ELECTRIC CO.
Phone Fruitvale 5980. 557 Hotel St. Francis

KGO's broadcast is identical with that of the National Broadcasting Company.
See Page 26.



E. C. HUCKABEE

KGEF Los Angeles, Calif.—1300 Kc.

1000 WATTS—230.5 METERS
TRINITY METHODIST CHURCH. BOB SHULER, Pastor

C. C. Hooper
Manager

H. J. Hankins
Technician

Phone Westmore 8887

- 6:30 p. m.—John Unfried.
- 7:00 p. m.—Miscellaneous.
- 8:00 p. m.—Bob Shuler's Question Hour.
- 9:00 p. m.—Harry Scott.
- 9:30 p. m.—South Park Christian Bereans.
- 10:00 p. m.—Buddy Wiel.
- 10:30 p. m.—Hired Man.

WEDNESDAY, OCTOBER 23

- 6:00 p. m.—C. S. DeLanos Hawaiian program.
- 6:15 p. m.—Elona Louise Price.
- 6:30 p. m.—Tom Moore.
- 7:00 p. m.—Conrey Bible Class.
- 7:45 p. m.—Union Rescue Mission.
- 8:30 p. m.—Bob Shuler's Religious Discussion.
- 9:00 p. m.—Old Songs Quartet.
- 10:00 p. m.—Volunteers of America.
- 10:30 p. m.—Mr. and Mrs. Huckabee.

THURSDAY, OCTOBER 24

- 6:00 p. m.—Mrs. Tom Murray.
- 7:00 p. m.—Dr. Fredus Nelson Peters.
- 7:30 p. m.—Thomas Govan.
- 8:00 p. m.—Bob Shuler's Civic Message.
- 9:00 p. m.—Martha Spangler Nicholson, De Vere Nicholson.
- 10:00 p. m.—Adda Weidmyer and Lois Wilheite.
- 10:30 p. m.—Hired Man.

- SUNDAY, OCTOBER 20**
- 8:30 a. m.—Morning Watch Quartet.
 - 9:20 a. m.—Story Hour.
 - 10:00 a. m.—Claude L. Heskett's Bible Class.
 - 10:45 a. m.—Trinity Methodist Church.
 - 2:00 p. m.—Epworth M. E. Church.
 - 3:00 p. m.—West Coast Academy of Music.
 - 4:00 p. m.—Lutheran Churches of Southern California.
 - 4:30 p. m.—Hired Man.
 - 5:00 p. m.—Vesper Hour.
 - 7:00 p. m.—Prelude Questions of Bob Shuler.

TUESDAY, OCTOBER 22

- 6:00 p. m.—Yette Barber Studio.



AIMEE SEMPLE
McPHERSON

KFSG Los Angeles, Calif.—1120 Kc.

500 WATTS—267.7 METERS
Angelus Temple, Echo Park. EX. 1141
"Four Square Gospel"

Aimee Semple McPherson
Founder, President

Roderick H. Morrison
Manager

M. E. Kennedy
Technician

Arthur Shank
Noian Tucker
Announcers

Esther Fricke
Temple Organist

- 7:00 p. m.—Musical Hour.
- 8:00 p. m.—Revival Service.
- 10:00 p. m.—Music Lover's Hour.

WEDNESDAY, OCTOBER 23

- 2:00 p. m.—Studio Recording.
- 3:00 p. m.—Divine Healing Service, Aimee Semple McPherson.
- 4:00 p. m.—Studio program.

THURSDAY, OCTOBER 24

- 2:00 p. m.—Studio program.
- 3:00 p. m.—Bethesda Hour.
- 4:00 p. m.—Travelogue of Holy Land.
- 8:00 p. m.—Water Baptismal Service, Aimee Semple McPherson.
- 9:30 p. m.—Foursquare Conservatory.

FRIDAY, OCTOBER 25

- 2:00 p. m.—Studio program.
- 3:00 p. m.—Bethesda Hour.
- 4:00 p. m.—Studio program.

SATURDAY, OCTOBER 26

- 8:00 p. m.—Divine Healing Service, Aimee Semple McPherson.
- 9:30 p. m.—Silver Band, R. H. Morrison.

- DAILY EXCEPT SUNDAY**
- 7:00 a. m.—Family Altar Hour.
 - 10:00 a. m.—Sunshine Hour.
 - 11:00 a. m.—Noonday Musicals.
- SUNDAY, OCTOBER 20**
- 8:00 a. m.—Sabbath Sunrise Hour.
 - 9:00 a. m.—Symphony Orchestra.
 - 10:30 a. m.—Sunday Morning Worship.
 - 2:30 p. m.—Dispensational Message.
 - 6:30 p. m.—Angelus Temple Silver Band.

"Hear It Better on a Sterling Radio"



SID GOODWIN

KGW

Portland, Oregon—620 Kc.

1000 WATTS—483.6 METERS
THE MORNING OREGONIAN
"Keep Growing Wiser"

Paul R. Heltmeyer
Manager

Jane Burns
Program Director

Abe Bercovitz
Director of Music

Vern Haybarker
Chief Engineer

DAILY EXCEPT SUNDAY

- 7:45 a. m.—Devotional Services.
8:00 a. m.—Shell Happy Time (except Tuesday).
9:00 a. m.—News.
9:10 a. m.—Oregonian Cooking School.
9:30 a. m.—Town Crier.
10:30 a. m.—Woman's Magazine of the Air, NBC
1:00 p. m.—U. S. Market Reports.
11:00 p. m.—Estate Weather Man; Dance Band (ex. Friday and Saturday).

SUNDAY, OCTOBER 20

- 10:00 a. m.—International Bible Students.
11:00 a. m.—Church Service.
1:00 p. m.—Catholic Truth.
1:30 p. m.—Organ recital.
2:30 Concert.
3:30 p. m.—Whittall Anglo Persians, NBC.
4:15 p. m.—"Book Chat."
4:30 p. m.—NBC Sunday Concert.
5:15 p. m.—Collier Hour, NBC.
6:15 p. m.—Atwater Kent Hour, NBC.
7:15 p. m.—Studebaker program, NBC.
7:45 p. m.—Enna Jettick Melodies, NBC.
8:00 p. m.—Bakers Enna Jetticks.
8:30 p. m.—Rollickers.
9:00 p. m.—Blumauer Frank.
9:30 p. m.—"Montag Fireside Hour."
10:00 p. m.—Little Symphony Orchestra.

MONDAY, OCTOBER 21

- 4:00 p. m.—Organ.
6:00-9:30 p. m.—NBC.*
9:30 p. m.—Bremer-Tully program.
10:00 p. m.—Ben Selling's Boys and Collegiates.
11:05 p. m.—Organ recital.

TUESDAY, OCTOBER 22

- 8:00 a. m.—Meeting of Portland Breakfast Club.
9:45 a. m.—Betty Crocker.
10:00 a. m.—Glidden, KGW.

- 10:15 a. m.—Fels Naptha.
11:30 a. m.—"Ducco" program.
2:00 p. m.—The Wanderers, NBC.
3:00 p. m.—Musical Master Works.
6:00-9:30 p. m.—NBC.*
9:30 p. m.—Franz Doughboys.
10:00 p. m.—Gold Shield concert, KOMO.

WEDNESDAY, OCTOBER 23

- 10:15 a. m.—Libby, McNeill & Libby, NBC.
1:15 p. m.—Organ recital.
3:00 p. m.—Cabin Door, NBC.
6:30-8:30 p. m.—NBC.*
8:30 p. m.—Maytag Radioette.
9:00 p. m.—Brunswick Hour.
9:30 p. m.—Veedol Vodvil, KOMO.
10:00 p. m.—Fisher Concert Orchestra from KOMO.

THURSDAY, OCTOBER 24

- 9:45 a. m.—Washburn-Crossby.
10:00 a. m.—Women's Magazine of the Air, NBC.
11:00 a. m.—Standard School, NBC.
11:45 a. m.—Maytag "So-A-Tone."
12:15 p. m.—Barbara Gould, KGW.
1:15 p. m.—Business talk, U. S. Dept. of Commerce.
3:00 p. m.—House of Myths, NBC.
5:00-9:30 p. m.—NBC.*
10:00 p. m.—Associated Brass Band from KOMO.

FRIDAY, OCTOBER 25

- 10:00 a. m.—Dubarry talk.
4:00 p. m.—Organ recital.
6:00 p. m.—Interwoven Stocking program, NBC.
6:30 p. m.—Philco's Theater Memories, NBC.
7:00 p. m.—Armstrong Quakers.
7:30 p. m.—Armour program, NBC.
8:00 p. m.—"RCA" Hour, NBC.
9:00 p. m.—Borden's Dairy.
9:30 p. m.—Union Oil program, NBC.
10:00 p. m.—Dance Band.
10:30 p. m.—Estate Weather Man; Hoot Owls.

SATURDAY, OCTOBER 26

- 10:00 a. m.—National Farm and Home Hour.
10:45 a. m.—Plummer.
2:00 p. m.—Football Broadcast.
4:00 p. m.—Phil Spitalny's Orchestra.
5:00 p. m.—All American Mohawk Corp. program, NBC.
6:00 p. m.—General Motor.
7:00 p. m.—Lucky Strike Hour, NBC.
8:00 p. m.—Temple program, NBC.
8:30 p. m.—Yale Union Laundry program.
9:00 p. m.—National Laundry Owners, NBC.
10:00 p. m.—Estate Weather Man; Dance Music.



CARL E. HAYMOND

KMO

Tacoma, Wash.—1340 Kc.

500 WATT WESTERN ELECTRIC—223.1 METERS
Owned by KMO, Inc.
Hotel Winthrop

Carl E. Haymond
Manager and Chief
Announcer
Jane Morse
Studio Director
Margie Mahon
Asst. Studio Director
J. D. Kolesar
Chief Technician

MONDAY, OCTOBER 21

- 6:00 p. m.—Sports Review.
6:15 p. m.—The Floorwalker.
6:30 p. m.—Musical Hits.
7:00 p. m.—Lyle Janz.
7:15 p. m.—YWCA program.
7:45 p. m.—Central Motors.
8:00 p. m.—Jane Morse, blues singer; Harry Foley.
9:00 p. m.—Elks' Forty-piece Band.

TUESDAY, OCTOBER 22

- 9:00 p. m.—Central Motors.
9:15 p. m.—Dance Music by remote control.

WEDNESDAY, OCTOBER 23

- 5:00 p. m.—Sports Review.
6:15 p. m.—The Floorwalker.
6:30 p. m.—Musical Hits.
7:45 p. m.—Central Motors.
8:00 p. m.—Lodge Springs Joy Boys' Orchestra.

THURSDAY, OCTOBER 24

- 9:00 p. m.—Central Motors.
9:15 p. m.—Bill Winders Winthrop Hotel Orchestra.

FRIDAY, OCTOBER 25

- 6:00 p. m.—Sports Review.
6:15 p. m.—The Floorwalker.
6:30 p. m.—Musical Hits.
7:00 p. m.—YMCA program.

SATURDAY, OCTOBER 26

- 9:00 p. m.—Central Motors.
9:15 p. m.—Bill Winders Winthrop Hotel Orchestra.
9:00 p. m.—Cole McElroy's Oregonians.

SUNDAY, OCTOBER 27

DAILY EXCEPT SUNDAY

- 6:45 a. m.—Daybreakers program.
8:00 a. m.—KMO Early Birds.
9:00 a. m.—Varied program.
9:30 a. m.—Medosweet Moments.
10:00 a. m.—News Flashes and Time Signals.
10:30 a. m.—Town Crier and Newscasting.
11:00 a. m.—Busy Bee program.
12:00 noon—Beauty Talk.
12:15 p. m.—Olympia Hour.
12:30 p. m.—Popular program.
1:00 p. m.—Late Phonograph Records.
1:30 p. m.—Philco Time.
2:00 p. m.—Puyallup Valley program.
2:30 p. m.—Popular program.
3:00 p. m.—C. E. Grant program.
3:30 p. m.—Wadsworth Bros.' Radio Store.
4:00 p. m.—KMO Matinee.
5:45 p. m.—Paulson, the Jeweler.

The essential features of these programs are identical with those sent us by the stations



GEORGE GODFREY

KOMO

Seattle, Wash.—920 Kc.
 FISHER'S BLEND STATION, 1000 WATTS—325.9 METERS
 METROPOLITAN CENTER, SEATTLE
 Telephone Elliott 5890

DAILY EXCEPT SUNDAY

- 7:55 a. m.—Inspirational Services.
- 8:00 a. m.—Shell Happy Time.
- 9:00 a. m.—Theater Organ Recital (except Tuesday and Thursday).
- 10:15 a. m.—Prudence Penny (except Friday).
- 10:30 a. m.—NBC, Woman's Magazine of the Air (except Monday and Saturday).
- 4:00 p. m.—Resume—Alining Stock Quotations (except Thursday and Saturday).
- 4:15 p. m.—Kiddies' program (except Thursday and Saturday).
- 4:45 p. m.—Stock and Bond Quotations (except Thursday and Saturday).
- 11:00 p. m.—Musical Musketeers, NBC.* (except Monday).
- 12:00 midnight.—Fox Fifth Ave. Theater Organ Recital (except Monday).

10:00 p. m.—NWT broadcast—Fisher's Blend Hour.

THURSDAY, OCTOBER 24

- SUNDAY, OCTOBER 20**
- 10:00 a. m.—International Bible Students Ass'n.
 - 11:00 a. m.—Studio program.
 - 11:15 a. m.—Plymouth Congregational Church.
 - 12:15 p. m.—Concert orchestra, with singers.
 - 1:00 p. m.—NBC System—National Sunday Forum.
 - 2:30 p. m.—Concert orchestra with singers.
 - 3:30-5:00 p. m.—NBC.*
 - 5:00 p. m.—Mixed Quartet.
 - 5:15-8:00 p. m.—NBC.*
 - 8:00 p. m.—First Church of Christ, Scientist.
 - 9:00 p. m.—NWT Broadcast—Studio program.
 - 9:30 p. m.—Francesco Longo's orchestra.
 - 10:30 p. m.—Artistic Ensemble.

- 9:00 a. m.—Popular orchestra, with singers.
- 9:30 a. m.—Glidden Paint Co., So-A-Tone broadcast.
- 9:45-11:45 a. m.—NBC.*
- 11:45 a. m.—Barbara Gould Auditone broadcast.
- 12:00 noon—Concert orchestra, with singers.
- 3:00 p. m.—NBC System—House of Myths.
- 5:00 p. m.—NBC System—Fleischmann Sunshine Hour.
- 6:00 p. m.—"An Hour with Grand Opera."
- 7:00-9:00 p. m.—NBC.*
- 9:00 p. m.—NWT broadcast—Crescent Old-Time Band.
- 10:00 p. m.—NWT broadcast—Associated Brass Band.
- 11:00 p. m.—Marmola So-A-Tone broadcast.

MONDAY, OCTOBER 21

- 11:30 a. m.—Marmola So-T-Tone broadcast.
- 11:45 a. m.—Concert orchestra, with singers.
- 1:15 p. m.—Popular orchestra, with singers.
- 3:00 p. m.—NBC—Salt Lake Tabernacle Choir.
- 5:00 p. m.—Concert orchestra, with singers.
- 8:00-9:00 p. m.—NBC.*
- 9:30 p. m.—Maytag So-A-Tone broadcast.
- 10:00 p. m.—Artistic Ensemble, with singers.
- 11:15 p. m.—Olympic Hotel Dance orchestra.

FRIDAY, OCTOBER 25

- 10:00 a. m.—NBC System—Duberry Radio Talk.
- 11:10 a. m.—Concert orchestra, with singers.
- 1:00 p. m.—NBC—Pacific Little Symphony.
- 2:00 p. m.—Popular orchestra, with singers.
- 3:15 p. m.—Concert orchestra, with singers.
- 4:30 p. m.—Stock, bond and grain quotations.
- 4:45 p. m.—NBC System—Back of the news in Washington.
- 5:00 p. m.—Concert orchestra, with singers.
- 6:00 p. m.—NBC System—Interwoven Pair.
- 6:30 p. m.—Studio program.
- 7:00-10:00 p. m.—NBC.*
- 10:00 p. m.—Brunswick Brevities—S-A-Tone broadcast.
- 10:45 p. m.—Studio program.

TUESDAY, OCTOBER 22

- 9:30 a. m.—F. W. Fitch Co., So-A-Tone broadcast.
- 9:45 a. m.—NBC—Washburn Crosby Talk on Baking.
- 10:00 a. m.—Maytag So-A-Tone broadcast.
- 11:30 a. m.—NBC System—Duco Decorators.
- 11:45 a. m.—Popular orchestra, with singers.
- 2:00 p. m.—NBC—The Wanderers.
- 5:00 p. m.—Popular orchestra, with singers in "Old-Time Program."
- 5:30-9:30 p. m.—NBC.
- 9:30 p. m.—Bremer-Tully So-A-Tone broadcast.
- 10:00 p. m.—NWT—Schwabacher's Gold Shield Hour.
- 11:15 p. m.—NBC System—Musical Musketeers.

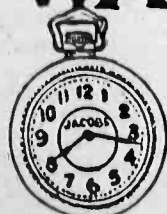
WEDNESDAY, OCTOBER 23

- 9:45 a. m.—YMCA Health Exercises.
- 10:15 a. m.—NBC System—Mary Halo Martin Hour.
- 11:45 a. m.—Marmola So-A-Tone broadcast.
- 12:00 noon—Concert orchestra, with singers.
- 1:00 p. m.—NBC—Pacific Vagabonds.
- 2:00 p. m.—Concert orchestra, with singers.
- 3:00 p. m.—NBC—Cabin Door.
- 5:00 p. m.—"A Half Hour of Fireside Favorites."
- 5:30 p. m.—Popular orchestra, with singers.
- 8:30-8:30 p. m.—NBC.*
- 8:30 p. m.—Nunn Bush & Weldon Shoe Co. program.
- 8:45 p. m.—"A Half Hour with the Light Opera."
- 9:30 p. m.—NWT broadcast—Veedol Vodvil.

SATURDAY, OCTOBER 26

- 9:30 a. m.—YMCA Health Exercises.
- 9:45 a. m.—Prudence Penny, "What to Prepare for Dinner."
- 10:00 a. m.—NBC—National Farm and Home Hour.
- 10:45 a. m.—Concert orchestra, with singers.
- 11:00 a. m.—NBC—University of Pennsylvania vs. University of California Football Game.
- 1:00 p. m.—Concert orchestra, with singers.
- 2:00 p. m.—Washington vs. Oregon.
- 4:00 p. m.—NBC—Phil Spitalmy's orchestra.
- 4:30 p. m.—Concert orchestra, with singers.
- 5:00 p. m.—NBC—All-American Mohawk program.
- 5:30 p. m.—Vocal Ensemble.
- 6:00-8:30 p. m.—NBC.*
- 8:30 p. m.—Marmola So-A-Tone broadcast.
- 8:45 p. m.—Artistic Ensemble.
- 9:00 p. m.—NBC—National Laundry Owners' Ass'n. program.
- 9:30 p. m.—The Friars.
- 10:00 p. m.—NBC—Tales Never Told.

WATCH HOSPITAL



Repairs any Watch for \$1. Parts Extra. All work is guaranteed for Two Years

408 SO. BROADWAY
 Opposite the Broadway Department Store



Announcements over KFVB, KMIC, KFQZ, KELW, KPLA



POWELL CROSLY, JR.

WLW

Cincinnati, Ohio — 700 Kc.

50,000 WATTS — 428 METERS
The Crosley Radio Corporation Ford Billings, Director
Pacific Standard Time

Only early morning and night hours are given, as daylight reception on the Pacific Coast is practically impossible.

- DAILY EXCEPT SUNDAY**
3:30 a. m.—Top 'O the Morning.
4:30 a. m.—Organ Program by Arthur Chandler.
5:00 a. m.—Absorbine Jr., Exercise Program.
5:30 a. m.—Morning Devotion.
6:00 a. m.—Crosley Woman's Hour.
7:00 p. m.—Weather Announcements (ex. Fri.).
8:00 p. m.—Amos 'n' Andy, NBC (ex. Tues.).
9:00 p. m.—Hotel Gibson Orchestra.
10:00 p. m.—Little Jack Little (ex. Fri. and Sat.).
- SUNDAY, OCTOBER 20**
6:30 a. m.—Church School.
5:00 p. m.—Enna Jettick Melodies, NBC.
5:15 p. m.—Collier's Hour.
6:15 p. m.—Penny-A-Day.
6:30 p. m.—Selby Symphony Hour.
7:30 p. m.—Cino Singers.
8:00 p. m.—Amos 'n' Andy, NBC.
8:15 p. m.—Musical Novelties.
- MONDAY, OCTOBER 21**
5:00 p. m.—Duro Automatics.
5:30 p. m.—Whitehouse Coffee Concert, NBC.
6:00 p. m.—Marron-Roosevelt Concert.
6:30 p. m.—Real Folks.
7:00 p. m.—Hamilton Tailoring Club.
7:30 p. m.—Empire Builders, NBC.
8:15 p. m.—Two-on-the-Aisle.
9:30 p. m.—Polly and Anna.
10:00 p. m.—Sign off.
- TUESDAY, OCTOBER 22**
5:00 p. m.—Werk program.
5:30 p. m.—Around the World with Libby, NBC.
6:00 p. m.—Johnson & Johnson program, NBC.
6:30 p. m.—Heatrola Time.
7:00 p. m.—Pete Arzan and his Arzan Kids.
7:30 p. m.—Nunn-Bush-Weldon program.

- 7:45 p. m.—The Two Keys, White and Black.
8:00 p. m.—Crosley Review.
9:30 p. m.—Variety Hour.
10:30 p. m.—Sign off.

- WEDNESDAY, OCTOBER 23**
5:00 p. m.—Northwestern Yeast, NBC.
5:30 p. m.—Sylvania Foresters, NBC.
6:00 p. m.—Studebaker Champions.
6:30 p. m.—Forty Fathom Trawlers, NBC.
7:00 p. m.—Kingtaste Night Club.
7:30 p. m.—Brunswick program.
8:15 p. m.—Chime Reveries.
9:30 p. m.—Howard Melaney, the Singing Fireman.
10:30 p. m.—Sign off.

- THURSDAY, OCTOBER 24**
5:00 p. m.—Lehn and Fink Serenade, NBC.
5:30 p. m.—Champion Sparkers.
6:00 p. m.—Billiken Troupers.
6:30 p. m.—Marxell House Coffee Concert, NBC.
7:00 p. m.—Hollingsworth Hall.
7:30 p. m.—Henry Fillmore's Band.
8:15 p. m.—Trio and Melville Ray.
8:30 p. m.—Los Amigos, a program for Latin America.
9:30 p. m.—Mansfield and Lee.
10:30 p. m.—Sign off.

- FRIDAY, OCTOBER 25**
5:00 p. m.—Triadors, NBC.
5:30 p. m.—Dr. Wifco.
5:45 p. m.—Cradcock Terry program, NBC.
6:00 p. m.—The Interwoven Pair, NBC.
6:30 p. m.—Penny-A-Day.
7:00 p. m.—Maytag Radioette.
7:30 p. m.—Armour program, NBC.
8:15 p. m.—Tony's Scrap Book.
8:30 p. m.—Gene, Ford and Glenn.
9:30 p. m.—Sweet and Low Down.
10:00 p. m.—The Nation's All Night Party.
2:00 a. m.—Sign off.

- SATURDAY, OCTOBER 26**
5:00 p. m.—Blue Ridge Mountaineers.
5:30 p. m.—Marvin, NBC.
6:00 p. m.—Historical Highlights.
6:30 p. m.—Gene, Ford and Glenn.
7:00 p. m.—Enna Jettick Dance.
8:15 p. m.—The Honoluluans.
8:30 p. m.—Cincinnati Club Orchestra.
9:00 p. m.—Little Jack Little.
10:00 p. m.—Sign off.



KENNARD STUART

KOL

Seattle, Washington—1270 Kc.

1000 WATTS—230 METERS
Operated by THE SEATTLE BROADCASTING CO., INC.
Araide Building—Phone Elliott 4466

Hal King
Manager

- DAILY EXCEPT SUNDAY**
6:45 a. m.—Radio Time Clock.
7:00 a. m.—Eye Opener Program.
8:00 a. m.—Program of general interest (ex. Wed.).
9:45 a. m.—Talk by Dr. Arthur of Seattle Candoris Guild.
10:00 a. m.—Sessions Chimes.
12:00 noon—Organ recital by Frederick C. Feringer. (except Friday).
2:45 p. m.—Baseball (except Monday).
4:45 p. m.—News items and weather reports.
5:00 p. m.—Dinner Hour Concert.
6:00 p. m.—Sessions Chimes.
9:00 p. m.—Ken Stuart, "A Little Sunshine."
10:00 p. m.—Sessions Chimes.
- SUNDAY, OCTOBER 20**
9:30 p. m.—Guy Olson's Scandinavian American Dance Band.
- MONDAY, OCTOBER 21**
12:30 p. m.—Matinee Melodies.
6:30 p. m.—Ranch Dance Band.
7:00 p. m.—Margaret Gray.
9:00 p. m.—Studio program.

- 9:30 p. m.—Charles Keating, tenor.
10:00 p. m.—Studio program.
- TUESDAY, OCTOBER 22**
12:30 p. m.—Kiwanis Club Luncheon.
7:00 p. m.—"Old Uncle Henry"—Frank Coombs.
8:00 p. m.—Hal Chase and Investment program.
9:30 p. m.—Margaret Gray.
10:00 p. m.—Studio program.

- WEDNESDAY, OCTOBER 23**
12:30 p. m.—Rotary Club Luncheon.
1:30 p. m.—Matinee Melodies.
2:45 p. m.—Studio program.
7:15 p. m.—Margaret Gray, piano.
8:00 p. m.—Bridge Game.
8:30 p. m.—Ban Joe and Eddy.
9:15 p. m.—Tucker's Everstate Band.
- THURSDAY, OCTOBER 24**
12:30 p. m.—Matinee Melodies.
6:30 p. m.—Ranch Dance Band.
7:00 p. m.—"Old Uncle Henry"—Frank Coombs.
8:00 p. m.—KOL Players—Drama.
8:30 p. m.—Stay-Young program—KOIN, Portland.
9:30 p. m.—Margaret Gray, piano.
10:00 p. m.—Studio program.

- FRIDAY, OCTOBER 25**
12:00 noon.—Chamber of Commerce.
2:45 p. m.—Studio program.
7:00 p. m.—Eulala Dean, vocalist; Margaret Gray.
8:00 p. m.—Hal Chase and Investment Program.
9:15 p. m.—Tucker's Everstate Dance Band.
10:15 p. m.—Tucker's Everstate Dance Band.
- SATURDAY, OCTOBER 26**
12:30 p. m.—Matinee Melodies.
6:30 p. m.—George Maddox, tenor; Margaret Gray.
10:15 p. m.—Tucker's Everstate Dance Band.
12:00 midnight—Tucker's Everstate Dance Band.

The essential features of these programs are identical with those sent us by the stations



JEAN PAUL KING

KHQ Spokane, Washington—590 Kc.

1000 WATTS—508.2 METERS
LOUIS WASMER, INC., Standard Stock Exchange Bldg.
Telephone Main 4442

Jean Paul King
Chief Announcer
Harry Lantry
Manager
Harvey Wixson
Announcer
Jack Chapman
Commercial Manager
Al Sparling
Engineer

12:00 noon.—Chamber of Commerce luncheon.
1:00 p. m.—Crosley Musical review.
2:00 p. m.—The Wanders, NBC.
3:00 p. m.—Theatrical preview.
4:00 p. m.—Concert Orchestra.
5:00 p. m.—Matched Unit Hour.
5:30 to 9:30 p. m.—NBC.*
9:30 p. m.—Dutch Dough Boys.
10:00 p. m.—Spotlight Review, NBC.
11:00 p. m.—Musical Musketeers, NBC.

WEDNESDAY, OCTOBER 23

7:30 a. m.—Kronenberg's program.
10:00 a. m.—Marmola So-A-Tone.
10:15 a. m.—Libby, McNeill & Libby, NBC.
11:30 a. m.—Chips of Pleasure.
11:45 a. m.—Farmers' Service Hours; news.
12:00 noon.—Lewiston, Idaho, program.
1:00 p. m.—Crosley Musical Review.
3:00 p. m.—Cabin Door, NBC.
4:00 p. m.—Voice of Sparton.
4:30 p. m.—Concert Orchestra.
5:30 p. m.—Temple-Tones.
6:00 p. m.—Dutch Dough Boys.
6:30 to 9:00 p. m.—NBC.*
9:00 p. m.—Bremer Tully.
9:30 p. m.—Veedol Vodril, NWT.
10:00 p. m.—Cotton Blossom Minstrels, NBC.
11:00 p. m.—Musical Musketeers, NBC.

THURSDAY, OCTOBER 24

9:30 a. m.—Sunshine program.
9:45 a. m.—Gold Medal program, NBC.
10:00 a. m.—Woman's Magazine of the Air, NBC.
11:00 a. m.—Standard School broadcast, NBC.
11:45 a. m.—Farmers' Service Hour.
12:15 p. m.—Musical program.
3:00 p. m.—House of Myths, NBC.
4:00 p. m.—Triodian String Ensemble.
5:00 p. m.—Fleischmann Sunshine Hour, NBC.
7:00 to 9:00 p. m.—NBC.*
9:00 p. m.—Crescent's Old Time Band to KOMO.
9:30 p. m.—Cambert's Dutch Dough Boys.
10:00 p. m.—Associated Brass Band, KOMO.

FRIDAY, OCTOBER 25

10:00 a. m.—Richard Hudnut, NBC.
10:15 a. m.—Sunshine Liberty Organ.
11:10 a. m.—Farmers' Service Hour.
12:15 p. m.—Musical program.
2:00 p. m.—Gems from Sartori.
3:00 p. m.—Theatrical Review.
4:00 p. m.—Triodian String Ensemble.
5:00 p. m.—Studio program.
6:00 to 11:00 p. m.—NBC.*

SATURDAY, OCTOBER 26

10:00 a. m.—National Farm and Home Hour, NBC.
10:45 a. m.—Sunshine Liberty Organ.
11:00 a. m.—Farmers' Service Hour.
2:00 p. m.—Football Game.
5:00 p. m.—Lyric Challengers, NBC.
5:30 p. m.—Triodia String Ensemble.
6:00 to 8:30 p. m.—NBC.*
8:30 p. m.—Concert Orchestra.
9:00 p. m.—National Laundry Association, NBC.
9:30 p. m.—Dutch Dough Boys.
10:00 p. m.—Tales Never Told, NBC.
11:00 p. m.—Musical Musketeers, NBC.

DAILY EXCEPT SUNDAY
7:00 a. m.—Northwest Sunrise Pep Period.
7:30 a. m.—Model Musical Klock.
8:00 a. m.—The Shall Happy Time, NBC.
9:00 a. m.—Musical Bazaar (except Tuesday).
10:30 a. m.—Woman's Magazine of the Air, NBC (except Thursday and Saturday).
12:00 noon.—National Savings Luncheon program (except Tuesday and Wednesday).
12:15 p. m.—Musical program (ex. Tues., Wed., Sat.).
12:30 p. m.—Voice of Sparton (ex. Tues. and Wed.).
1:00 p. m.—Crosley Musical Review.
1:30 p. m.—Miss Modern.
1:45 p. m.—Fur Facts.
2:00 p. m.—Washington Home Service (ex. Tuesday, Wednesday and Friday).
3:30 p. m.—Paint o' Mine program (ex. Thursday).
10:00 p. m.—Time to Insure.

SUNDAY, OCTOBER 20

9:30 a. m.—Uncle Billy Reads the Funnies.
10:00 a. m.—Children's Bible Class.
10:00 a. m.—Church services.
12:00 noon.—Concert Orchestra.
1:00-4:00 p. m.—NBC.*
4:00 p. m.—Concert Orchestra.
5:15-8:00 p. m.—NBC.*
8:00 p. m.—All Saints' Cathedral.
9:00 p. m.—Blumaeur Frank, NWT.
9:30 p. m.—City Service concert.

MONDAY, OCTOBER 21

11:30 a. m.—Farmers' Service Hour.
12:00 noon.—National Savings Luncheon program.
12:15 p. m.—Musical program.
3:00 p. m.—Theatrical preview.
4:00 p. m.—Concert Orchestra.
5:00 p. m.—Matched Units Hour.
5:30 p. m.—Dutch Dough Boys.
6:00 to 9:30 p. m.—NBC.*
9:30 p. m.—Brunswick Brevities.
10:00 p. m.—Marmola So-A-Tone.
10:15 p. m.—Matched Units Hour.
10:30 p. m.—KHQ Ensemble Hour.
11:30 p. m.—Liberty Theater organ concert.

TUESDAY, OCTOBER 22

9:00 a. m.—Health in Refrigeration.
9:30 a. m.—Musical Bazaar.
9:45 a. m.—Gold Medals program, NBC.
10:00 a. m.—Mormola So-A-Tone.
10:15 a. m.—Sunshine Liberty organ.
11:30 a. m.—Duco Decorators, NBC.
11:45 a. m.—Farmers' Service Hour; news.

GUARANTEED RADIO SERVICE

Scientific Analysis with Supreme Radio Diagonmeter

H. A. Everest

7406 MELROSE AVE. OREGON 4702

K. G. Landgraf

A COMPLETE CATALOG

containing detailed information on condensers and resistors may be had free on request.



82 1/2 Washington St., Bklyn., N. Y.

THE RESEARCH WORKER

will keep you abreast of developments in radio. It may be had free on request.

"Hear It Better on a Sterling Radio"

The essential features of these programs are identical with those sent us by the stations



TOM BARBRE

KDYL

John M. Baldwin
Technical Director

Charles R. Hanson
Musical Director

George D. Snell
Announcer

Tom Barbé
Announcer

Victor P. Vette
Technical Announcer

DAILY EXCEPT SUNDAY

- 6:00 a. m.—"Good Morning."
6:05 a. m.—The Alarm Clock.
7:00 a. m.—Breakfast program of waltz tunes and weather reports.
7:30 a. m.—"Top o' the Morning" program.
7:46 a. m.—Fifteen Minutes with the popular song writers.
8:00 a. m.—News of the World.
8:15 a. m.—Housewives' program and Mrs. Tenny.
9:30 a. m.—"Contrasts."
10:00 a. m.—Midday organ recital.
10:30 a. m.—Songs from the Silversheet.
10:45 a. m.—Farm flashes, weather report.
11:00 a. m.—Columbia Broadcasting System.
12:00 noon—Columbia Broadcasting System.
1:00 p. m.—Columbia Broadcasting System.
1:30 p. m.—Afternoon Jazz Skit.
2:00 p. m.—Varieties.
2:30 p. m.—Popular period of requests.
3:00 p. m.—Matinee Dance Hour.
4:00 p. m.—Uncle Ben and the Kangaroo Club.
4:30 p. m.—The day's popular tunes.
5:00 p. m.—Dinner Hour Varieties (ex. Wednesday).
9:00 p. m.—World Bookman (ex. Fri. and Sat.).
10:00 p. m.—Weather report.
10:00 p. m.—Dance music.

SUNDAY, OCTOBER 20

- 8:00 a. m.—"Good Morning."
8:01 a. m.—Old melodies.
9:00 a. m.—Concert sketches.
10:00 a. m.—Echoes of the organ.
11:00 a. m.—Noon-day Rhythm.
12:00 noon—CBS, Symphonic Hour.
1:00 p. m.—CBS, "Cathedral Hour."
2:00 p. m.—"The McKesson News Reel of the Air."
CBS.
2:30 p. m.—Popular period of requests.
4:30 p. m.—CBS, French Trio and guest soloist.



FRED J. HART

DAILY EXCEPT SUNDAY

- 10:00 a. m.—Helpful Hour.
12:00 noon—Musical program.
12:30 p. m.—Market report and weather from S. F.
1:00 p. m.—Hart's Half Hour.
1:30 p. m.—The Friendly Hour.
2:30 p. m.—Musical program.
5:00 p. m.—Children's program.
6:00 p. m.—U. S. D. A. Farm Flashes (ex. Saturday).
6:10 p. m.—Crop reports and weather (ex. Saturday).
6:30 p. m.—Market and weather reports (ex. Saturday).
6:45 p. m.—Farm Reporter (ex. Saturday).
6:55 p. m.—Farmers' Exchange (ex. Saturday).
7:00 p. m.—Farm Bureau Evening Radio News.

SUNDAY, OCTOBER 20

- 10:15 a. m.—Sunday School Lessons by Fred J. Hart.

Salt Lake City—1290 Kc.

1000 WATTS—232.6 METERS

S. S. FOX, General Manager

PHILIP G. LASKY, Station Director
KENNETT LARSON, Program Director

- 4:45 p. m.—CBS, "The World's Business."
5:30 p. m.—CBS, Sonatone program.
6:00 p. m.—CBS, "Majestic Theater of the Air."
7:00 p. m.—CBS, Arabesque.
7:30 p. m.—CBS, Around the Samovar, Russian music.
8:00 p. m.—CBS, "Back Home."
9:00 p. m.—"The Cadillac 8," Hot-Cha Dance music.
MONDAY, OCTOBER 21
6:00 p. m.—Program, featuring the "Western Baritone."
6:30 p. m.—CBS, "An Evening in Paris."
7:30 p. m.—Story in a Song.
8:00 p. m.—CBS, Hotel Paramount Orchestra.
8:30 p. m.—CBS, Paul Specht's Orchestra.
9:00 p. m.—Variety program of favorite tunes.

TUESDAY, OCTOBER 22

- 6:00 p. m.—CBS, Paul Whiteman and his orchestra.
7:00 p. m.—Johnny Rosell's Dance orchestra.
7:30 p. m.—CBS, Night Club Romance.
8:00 p. m.—CBS, Jesse Crawford, organist
8:30 p. m.—CBS, "The Dream Boat"

WEDNESDAY, OCTOBER 23

- 5:00 p. m.—CBS, Voice of Columbia.
7:00 p. m.—CBS, Kolster program.
7:30 p. m.—CBS, Dixie Echoes.
8:00 p. m.—"Sunset Hour."
9:00 p. m.—Variety program.

THURSDAY, OCTOBER 24

- 5:30 p. m.—CBS, United States Army Band
6:00 p. m.—Program, featuring the "Western Baritone."
6:30 p. m.—The Montagues in novel duet arrangements.
7:30 p. m.—CBS, National Forum from Washington.
8:00 p. m.—CBS, Hotel Paramount Orchestra.
8:30 p. m.—CBS, "The Dream Boat"

FRIDAY, OCTOBER 25

- 6:30 p. m.—The "79ers."
7:00 p. m.—Johanna Lee Instrumental Trio.
7:30 p. m.—CBS, Jesse Crawford, popular organist
8:30 p. m.—With the Senator from San Pitt.
9:00 p. m.—CBS, True Story Hour—the adventures of Mary and Bob.

SATURDAY, OCTOBER 26

- 12:00 noon—CBS, Football Broadcast.
6:00 p. m.—CBS, "Joe and Vi."
7:00 p. m.—CBS, Paramount Public Hour.
8:00 p. m.—CBS, Guy Lombardo and his Royal Canadians.
8:30 p. m.—CBS, Pancho's orchestra.
11:00 p. m.—Vodenville Frolic.
12:00 midnight—"Anything Your Heart Desires"

KQW San Jose, California—1010 Kc.

CALIFORNIA FARM BUREAU STATION
500 WATTS—296.6 METERS

FRED. J. HART, Manager

- 11:00 a. m.—Morning Services, First Baptist Church, conducted by Rev. Paul H. Ralstin.
7:30 p. m.—Evening Services, First Baptist Church.

MONDAY, OCTOBER 21

- 11:00 a. m.—Santa Cruz program.
8:00 p. m.—Studio program.
9:00 p. m.—Watsonville program.

TUESDAY, OCTOBER 22

- 11:00 a. m.—Los Gatos program.
8:00 p. m.—"You Never Can Tell" program.

WEDNESDAY, OCTOBER 23

- 11:00 a. m.—Watsonville program.
8:00 p. m.—First Baptist Church.

THURSDAY, OCTOBER 24

- 11:00 a. m.—Monterey Peninsula program.
8:00 p. m.—Songs of the Old Church Choir.

FRIDAY, OCTOBER 25

- 11:00 a. m.—Palo Alto program.
8:00 p. m.—KQW Minstrels.
9:00 p. m.—Leda Gregory Jackson in S. P. program.

SATURDAY, OCTOBER 26

- 11:00 a. m.—Audition Hour.
5:30 p. m.—Musical program.
6:30 p. m.—Musical program.
7:30 p. m.—State College Glee Club.
8:30 p. m.—Studio program.

The essential features of these programs are identical with those sent us by the stations



FREEMAN H. TALBOT

KOA

Denver, Colorado—830 Kc.
 12,500 WATTS—361.2 METERS GENERAL ELECTRIC CO.
 Pacific Standard Time. Tel. York 5090
 "Rocky Mountain Broadcasting Station"

DAILY EXCEPT SATURDAY AND SUNDAY

- 6:00 a. m.—Morning Revelers.
- 10:00 a. m.—National Farm and Home Hour, NBC.
- 10:45 a. m.—Weather, Stocks and Market Reports.
- 11:10 a. m.—Organ Recital.

- 8:30 p. m.—United Reproducers, NBC.
 - 9:00 p. m.—KOA String Trio.
- FRIDAY, OCTOBER 25**
- 8:00 a. m.—Music Appreciation Hour, NBC.
 - 9:00 a. m.—Evening Stars, NBC.
 - 12:00 noon.—Pacific Little Symphony Orchestra, NBC.
 - 3:30 p. m.—A Recipe a Day.
 - 3:35 p. m.—Matinee; John Jameson, tenor.
 - 4:20 p. m.—Lessons in French.
 - 5:00 p. m.—Cities Service Orch. and Cavaliers, NBC.
 - 6:00 p. m.—Interwoven Pair, NBC.
 - 6:30 p. m.—Philco Hour, NBC.
 - 7:00 p. m.—Armstrong Quakers, NBC.
 - 7:30 p. m.—Armour & Co., NBC.
 - 8:00 p. m.—Amos 'n' Andy, NBC.
 - 8:15 p. m.—Super Tread program.
 - 8:45 p. m.—Sally Mason in "News Songs."
 - 9:00 p. m.—Borden's Milk Co., NBC.
 - 9:30 p. m.—The Stagecoachers.
 - 10:00 p. m.—In the Parlor, NBC.
 - 10:30 p. m.—The Nomads, NBC.

- SUNDAY, OCTOBER 20**
- 9:50 a. m.—Services of Trinity Methodist Episcopal Church, Denver.
 - 1:00 p. m.—National Sunday Forum, NBC.
 - 2:30 p. m.—Tea time Tunes, NBC.
 - 3:00 p. m.—Echoes of the Orient, NBC.
 - 3:15 p. m.—Everett E. Foster, baritone.
 - 8:30 p. m.—Whittall Anglo Persians, NBC.
 - 4:00 p. m.—Rosalie Wolf and string quartet, NBC.
 - 4:30 p. m.—At the Baldwin, NBC.
 - 5:00 p. m.—Enna Jettick Melodies, NBC.
 - 5:15 p. m.—Collier's Radio Hour, NBC.
 - 6:15 p. m.—Atwater Kent Hour, NBC.
 - 7:15 p. m.—Studebaker Champions, NBC.
 - 7:45 p. m.—Vocal Soloist, NBC.
 - 8:00 p. m.—Amos 'n' Andy, NBC.
 - 8:15 p. m.—Russian Cathedral Choir, NBC.
 - 8:45 p. m.—Sam Herman, xylophonist, NBC.

- MONDAY, OCTOBER 21**
- 2:00 p. m.—Mormon Tabernacle Choir, NBC.
 - 4:30 p. m.—Brazilian and American Coffee program.
 - 4:45 p. m.—Weather, stock, markets, etc.
 - 5:15 p. m.—Brown Palace Hotel Orchestra.
 - 5:55 p. m.—Denver Better Business Bureau.
 - 6:00 p. m.—Edison program, NBC.
 - 6:30 p. m.—General Motors Family Hour, NBC.
 - 7:30 p. m.—Empire Builders, NBC.
 - 8:00 p. m.—Amos 'n' Andy, NBC.
 - 8:15 p. m.—Supreme Serenaders.
 - 8:45 p. m.—News of the World from the Denver Post.
 - 9:00 p. m.—The Voice of Firestone, NBC.
 - 9:30 p. m.—Plantation Echoes, NBC.
 - 10:00 p. m.—Slumber Hour, NBC.

- TUESDAY, OCTOBER 22**
- 1:15 p. m.—Matinee Gems, NBC.
 - 3:05 p. m.—Compositions of Charles Wakefield Cadman.
 - 3:50 p. m.—Lessons in French.
 - 4:00 p. m.—Roads of the Sky, NBC.
 - 4:30 p. m.—Lew White, organ recital, NBC.
 - 5:00 p. m.—Stocks, markets, livestock.
 - 5:30 p. m.—Farm Question Box.
 - 6:00 p. m.—Eveready Hour, NBC.
 - 7:00 p. m.—Olequot Club Eskimos, NBC.
 - 7:30 p. m.—Freshman Orchestralians, NBC.
 - 8:00 p. m.—Radio-Kelth-Orpheum Hour, NBC.
 - 8:30 p. m.—General Electric Hour; the A Capella Choir of the Denver College of Music.
 - 10:30 p. m.—Koa Koons.

- WEDNESDAY, OCTOBER 23**
- 12:00 noon.—Pacific Vagabonds, NBC.
 - 4:30 p. m.—Stocks, markets, road reports.
 - 5:00 p. m.—Mobil Oil Orchestra, NBC.
 - 5:30 p. m.—Extension Service, Colorado Agricultural College.
 - 6:00 p. m.—Ipana Troubadours, NBC.
 - 6:30 p. m.—Palmolive Hour, NBC.
 - 7:30 p. m.—Stromberg-Carlsons, NBC.
 - 8:00 p. m.—Amos 'n' Andy, NBC.
 - 8:15 p. m.—Vassar Chocolates Girl.
 - 8:45 p. m.—Billiken Shoemakers.
 - 9:00 p. m.—KOA Concert Orchestra.
 - 10:00 p. m.—Cotton Blossom Minstrels, NBC.

- THURSDAY, OCTOBER 24**
- 12:00 noon.—Farm Electrification Chat.
 - 8:00 p. m.—Black and Gold Room Orchestra, NBC.
 - 9:00 p. m.—Federated Hymn Sing, NBC.
 - 4:30 p. m.—Stocks, markets, etc.
 - 5:00 p. m.—Fleischmann Sunshine Hour, NBC.
 - 6:00 p. m.—Aroadians Mixed Quartet.
 - 6:30 p. m.—Maxwell House Coffee Hour, NBC.
 - 7:00 p. m.—Halsey Stuart, NBC.
 - 7:30 p. m.—Victor Talking Machine Co., NBC.
 - 8:00 p. m.—Amos 'n' Andy, NBC.
 - 8:15 p. m.—Ralph Hansell, xylophonist.

- SATURDAY, OCTOBER 26**
- 12:30 p. m.—RCA Demonstration Hour, NBC.
 - 1:30 p. m.—Colo. Aggies vs. Univ. of Utah.
 - 4:00 p. m.—Phil Spitalny's Music, NBC.
 - 4:30 p. m.—The Skellodians, NBC.
 - 5:00 p. m.—All American Mohawk, NBC.
 - 5:30 p. m.—National Laundry Owners, NBC.
 - 6:00 p. m.—General Electric Hour, NBC.
 - 7:00 p. m.—Lucky Strike Hour, NBC.
 - 8:00 p. m.—Amos 'n' Andy, NBC.
 - 8:15 p. m.—International Sunday School lesson.

Sunset Grounds and Aerials

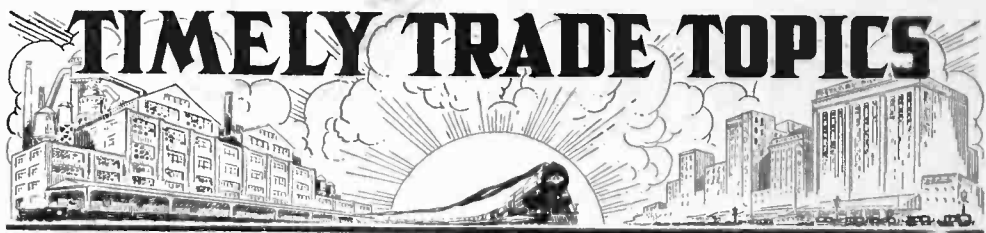
Can be Obtained by Mail from your nearest Sears Roebuck Store

- | | |
|---------------|-----------------|
| Santa Ana | San Jose |
| Riverside | San Luis Obispo |
| San Diego | Reno |
| Fresno | Ogden |
| Stockton | Salt Lake |
| Sacramento | Douglas |
| San Francisco | Tucson |
| Long Beach | Phoenix |

LOS ANGELES

9th & Boyle Sts., Vermont & Western
 Santa Monica & Western

ADDRESS RADIO DEPT. NO. 57,
SEARS ROEBUCK & CO.



Yale Radio Electric Company report that they have just received several carloads of the new model Apex sets and that dealers can be assured of prompt delivery out of stock on practically all models.

Announcement was made last week of the appointment of Fey & Krause, at 1616 South Figueroa Street, as Southern California distributors for Sonora Radio. Under the leadership of H. D. Alshuler this new member of the radio family will present this well-known line of receivers to the trade.

The world's series was of great interest to all fans, and large crowds gathered at most all radio stores and locations where public broadcast was available to get the world's series returns.

No crowd, however, exceeded that gathered in front of the Radio Supply Company. Particular interest to this broadcast was due to the location and the excellent results that were obtained in the amplification from the radio to those who wanted to enjoy the game. This was accomplished by a TAM Tuner, which is a six stage radio tuner of high quality, and amplified through a Samson PAM Amplifier to the speakers into the street. The reception across the street and for a long distance up and down Broadway was excellent.

With Sparton radio production at the highest peak of history, more than two hundred Southern California dealers gathered Wednesday morning at the Los Angeles Commercial Club at a special "mystery dynamite meeting" called by Walter M. Fagan, President of Pacific Wholesale, Inc., Sparton distributors.

Refuting rumors of impending principle changes in Sparton sets, Fagan addressed the gathering, pointing out the state of virtual perfection attained by these receivers.

"These rumors of revolutionary changes are utterly absurd," he said. "The Sparton set has reached a point where it presents the ultimate in tone, operation simplicity and distance getting—the three vital features of any set. It is only along these lines that improvements ever could be made—and the Spartons have achieved a state of near perfection."

Tuesday morning, October 8th, for the first time in the history of the Broadway Department store, one of the employees' songfests and programs was broadcast by remote control, over KMTR, direct from the street floor of the big institution at Fourth and Broadway. "The New Idea Man" and his gang helped out, but the program numbers were all put on by the employees themselves and revealed some surprising and unsuspected talent. The chorus numbers, under the virile direction of Prof. Hugo Kirchofer, and embracing more than 2500 employees, created the greatest comment, and radio listeners reported that they came in clear and distinct, and proved most novel and inspiring. Local and long distance phone calls swamped the studio phones.

NBC Program

(Continued from Page 26)

11:00 p. m.—Musical Musketeers. KHQ, KOMO, KPO.
11:00 p. m.—Henry Halstead's Hotel St. Francis Dance Orchestra. KGO.

SATURDAY, OCTOBER 26

10:00 a. m.—National Farm and Home Hour. KGO, KHQ, KOMO, KGW, KFI.
10:45 a. m.—The Three Boys. EGO.
11:30 a. m.—Rembrandt Trio. KGO.
5:00 p. m.—"The Lyric Challengers." KGO, KHQ, KGW, KFI.
6:00 p. m.—General Electric Hour. KGO, KHQ, KOMO, KGW, KPO, KFI.
7:00 p. m.—Lucky Strike Hour. KGO, KHQ, KOMO, KGW, KPO, KFI.
8:00 p. m.—Temple of the Air. KGO, KHQ, KOMO, KGW, KPO, KFI.
8:30 p. m.—Sierra Serenaders. KGO.
9:00 p. m.—"Launderland Lyrics." KGO, KHQ, KOMO, KGW, KPO, KFI.
9:30 p. m.—Western Artists Series Concert. KGO.
10:00 p. m.—"Tales Never Told." KGO, KHQ.
11:00 p. m.—Musical Musketeers. KGO, KHQ, KOMO.
12:00 p. m.—Wilt Gunzendorfer's Hotel Whitcomb Dance Band. KGO.